



**A WELL PRESENTED FOUR BEDROOM, THREE BATHROOM EXTENDED FAMILY HOME**

Little Green Lane, Croxley Green, Rickmansworth, Hertfordshire, WD3 3SR



Little Green Lane, Croxley Green, Rickmansworth,  
Hertfordshire, WD3 3SR

**OPEN PLAN KITCHEN/DINING/RECEPTION  
ROOM • GUEST WC • PRINCIPAL BEDROOM  
WITH ENSUITE • SECOND BEDROOM WITH  
ENSUITE • TWO FURTHER BEDROOMS •  
FAMILY BATHROOM • ATTRACTIVE REAR  
GARDEN • OFF-STREET PARKING • GARAGE**

### Description

A bright, well-maintained and spacious four bedroom, three bathroom linked-detached family home with far-reaching views of greenery and fields and a beautiful, well-manicured garden. This property is ideally placed for local amenities, schools and transport links.

Upon entering the property, there is a welcoming hallway with stairs to the first floor and a guest WC. There is a spacious, double-aspect reception/dining room with two feature fireplaces that effortlessly flows through to a light-filled kitchen.

The kitchen features a range of modern fitted units providing ample storage space, with integrated appliances, a breakfast bar and bi fold doors opening out to the garden.





To the first floor there is a principal bedroom with ensuite shower room, a second bedroom with ensuite, two further well-appointed bedrooms, and a four-piece family bathroom.

Externally, this lovely family home boasts a stunning rear garden laid to lawn with shrub, hedge and flowerbed borders, a patio with a modern pergola and a garden shed. To the front is a driveway providing off-street parking and a garage.

### **Location**

Rickmansworth town centre has a wide range of boutique shops, coffee houses, restaurants and major supermarkets. The Metropolitan and Chiltern line train services connect you to London Baker Street, Marylebone Station and beyond. The M25 motorway is available at both junction 17 and 18, connecting you to the national motorway network. Major London airports are also within reach. The area is well served for good quality private and state schools for all ages. Chorleywood and Rickmansworth offer everything for the sporting individual from rugby, cricket, football, tennis, horse riding and golf. Rickmansworth Aquadrome is an ideal setting for walks, sailing, fishing and water skiing.

### **Additional Information**

Tenure: Freehold

Local Authority: Three Rivers District Council

Council Tax Band: F

Energy Efficiency Rating: C

For additional information, please refer to



Approximate Gross Internal Area  
Ground Floor = 67.0 sq m / 721 sq ft  
First Floor = 66.2 sq m / 712 sq ft  
Garage = 17.8 sq m / 191 sq ft  
Total = 151.0 sq m / 1,624 sq ft

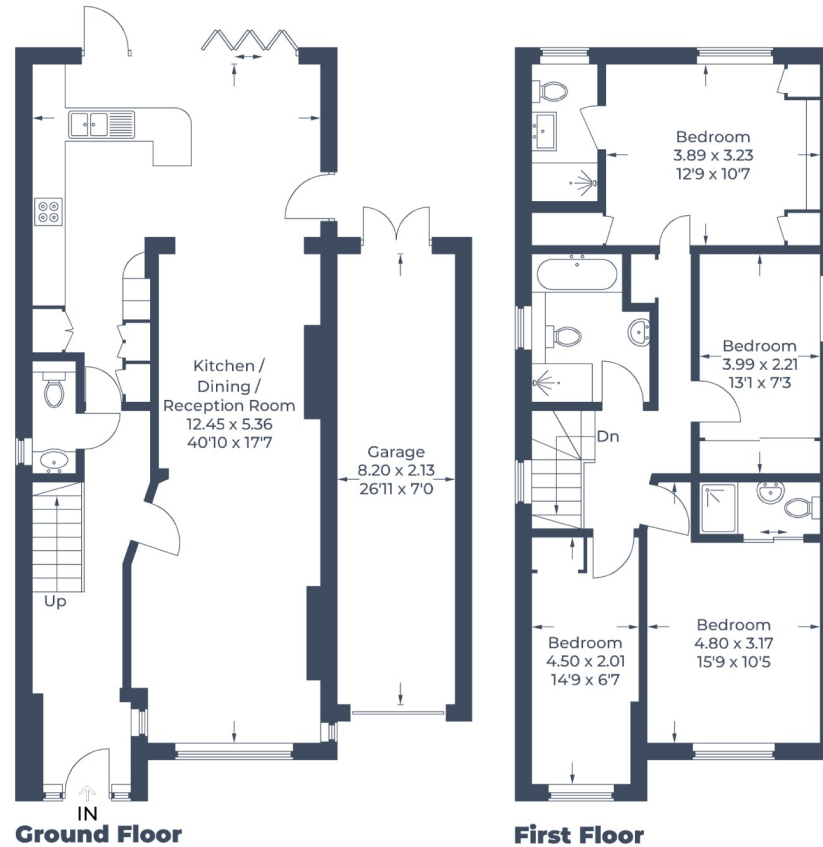


Illustration for identification purposes only,  
measurements are approximate, not to scale.  
© CJ Property Marketing Produced for Robsons

**ROBSONS**

130 High Street, Rickmansworth WD3 1AB  
Tel: 01923 777762 Email: rickmansworth@robsonswb.com  
[www.robsonswb.com](http://www.robsonswb.com)