



STUNNING GROUND FLOOR FLAT IN CENTRAL RICKMANSWORTH

Langwood House, 63-81 High Street, Rickmansworth, Hertfordshire, WD3 1EQ



STUNNING GROUND FLOOR FLAT IN CENTRAL RICKMANSWORTH

Langwood House, 63-81 High Street,
Rickmansworth, Hertfordshire, WD3 1EQ

- ENTRANCE HALL
- OPEN PLAN KITCHEN/RECEPTION ROOM
- DOUBLE BEDROOM
- MODERN SHOWER ROOM
- GROUND FLOOR
- SECURE CYCLE STORE
- CENTRAL RICKMANSWORTH LOCATION

Description

Robsons are pleased to showcase this immaculately presented ground floor apartment situated in the centre of Rickmansworth, ideal for access to the shops, restaurants and Rickmansworth Station.

The property is approached via a smart communal entrance.

This bright apartment is dressed in modern neutral tones. There is an entrance hall leading to the open plan kitchen/reception room, which has four windows, fitted units and integrated appliances, together with space for sofas, table and chairs.





There is also a double bedroom which has two windows and a fitted wardrobe and a modern shower room with fitted storage.

The property has the added benefit of a secure cycle store.

Location

Rickmansworth town centre has a wide range of boutique shops, coffee houses, restaurants and major supermarkets. The Metropolitan and Chiltern line train services connect you to London Baker Street, Marylebone Station and beyond. The M25 motorway is available at both junction 17 and 18, connecting you to the national motorway network. Major London airports are also within reach. The area is well served for good quality private and state schools for all ages. Chorleywood and Rickmansworth offer everything for the sporting individual from rugby, cricket, football, tennis, horse riding and golf. Rickmansworth Aquadrome is an ideal setting for walks, sailing, fishing and water skiing.

Additional Information

Guide Price: Price on Application

Tenure: Leasehold

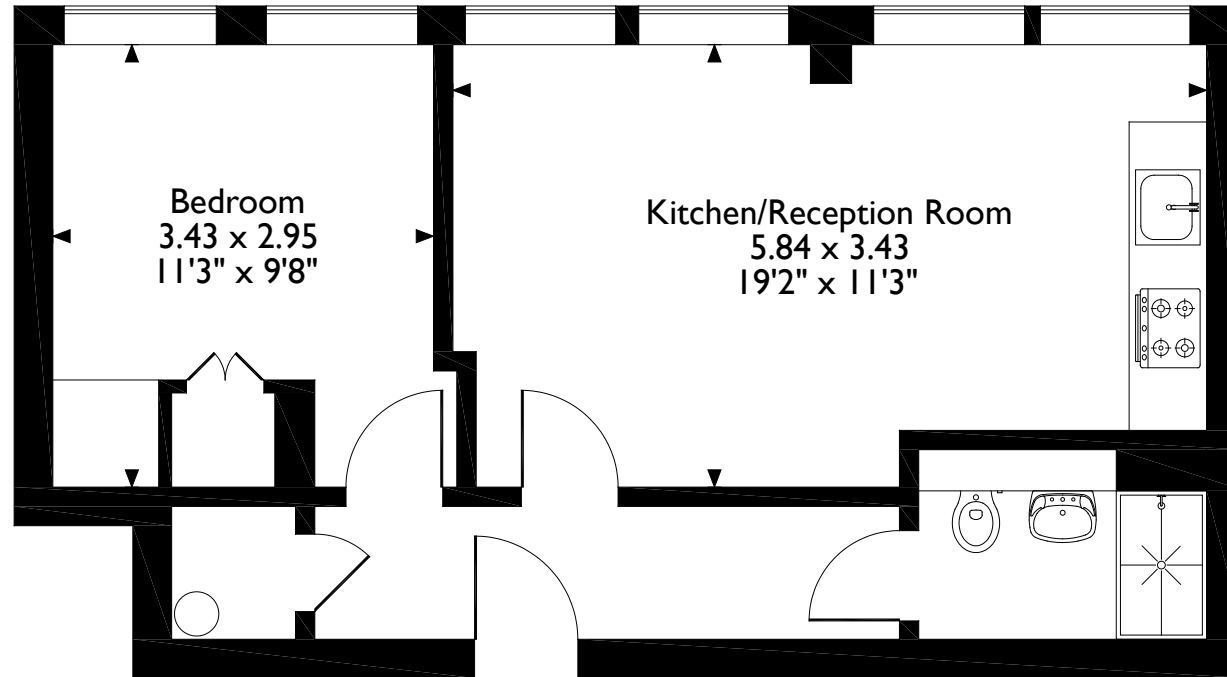
Local Authority: Three Rivers District Council

Energy Efficiency Rating: Band D



Langwood House 63-81 High Street, Rickmansworth

Approximate Gross Internal Area 40 Sq M/433 Sq Ft



Ground Floor

Please note that the location of doors, windows and other items are approximate and this floorplan is to be used for illustrative purposes only. Unauthorized reproduction is prohibited.

ROBSONS

130 High Street, Rickmansworth, Hertfordshire, WD3 1AB
Tel: 01923 777762 Email: rickmansworth@robsonswb.com

www.robsonswb.com

www.
the
londonoffice.co.uk
40 ST JAMES'S PLACE SW1