



A BEAUTIFULLY PRESENTED THREE BEDROOM DETACHED BUNGALOW

Plaitford Close, Rickmansworth, Hertfordshire, WD3 1NJ

ROBSONS

A BEAUTIFULLY PRESENTED THREE BEDROOM DETACHED BUNGALOW

Plaitford Close, Rickmansworth, Hertfordshire, WD3 1NJ

- LOUNGE
- KITCHEN
- CONSERVATORY
- THREE DOUBLE BEDROOMS
- TWO BATHROOMS
- REAR & FRONT GARDENS
- OFF-STREET PARKING & GARAGE

Description

A great opportunity to acquire a beautifully presented three-bedroom, two-bathroom bungalow with off-street parking, well-maintained rear and front gardens and within easy reach of local amenities and transport links.

The property comprises an entrance hallway with access to three well-appointed double bedrooms with one benefitting from an ensuite shower room and a family bathroom. The modern kitchen offers a range of fitted units providing ample storage space and integrated appliances.





There is a spacious, light and bright lounge with feature fireplace and French doors opening out to the garden. Off the lounge is a lovely conservatory, currently being used as a dining /sitting room.

Externally, this delightful home boasts a well-maintained rear garden that is laid to lawn with shrub and hedge borders, a tiered patio area and a garden shed. To the front there is a lovely garden with steps leading to the house, a driveway providing off-street parking, garage and side access to the rear garden.

Location

Rickmansworth town centre has a wide range of boutique shops, coffee houses, restaurants and major supermarkets. The Metropolitan and Chiltern line train services connect you to London Baker Street, Marylebone Station and beyond. The M25 motorway is available at both junction 17 and 18, connecting you to the national motorway network. The area is well served for good quality private and state schools for all ages. Chorleywood and Rickmansworth offer everything for the sporting individual from rugby, cricket, football, tennis, horse riding and golf. Rickmansworth Aquadrome is an ideal setting for walks, sailing, fishing and water skiing.

Additional Information

Tenure: Freehold

Local Authority: Three Rivers District Council

Council Tax: Band F

Energy Efficiency Rating: Band D



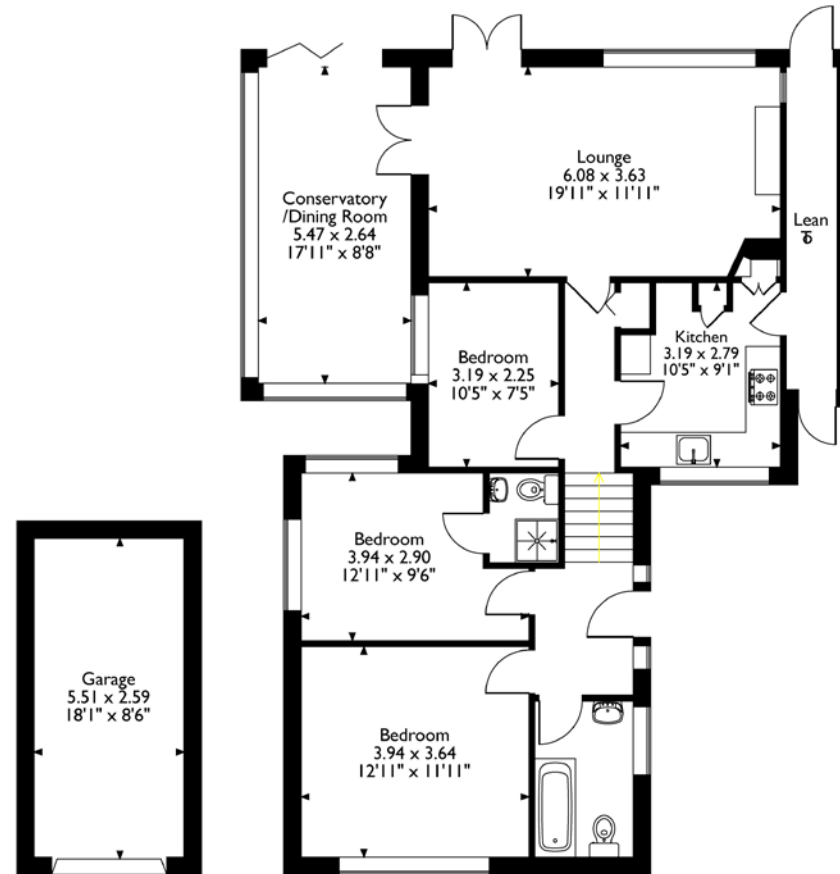
Plaitford Close, Rickmansworth, Hertfordshire

Approximate Gross Internal Area

Main House = 87 Sq M/935 Sq Ft

Garage = 14 Sq M/151 Sq Ft

Total = 101 Sq M/1086 Sq Ft



Ground Floor

Please note that the location of doors, windows and other items are approximate and this floorplan is to be used for illustrative purposes only. Unauthorized reproduction is prohibited.

ROBSONS

130 High Street, Rickmansworth, Hertfordshire, WD3 1AB

Tel: 01923 777762 rickmansworthl@robsonswb.com

www.robsonswb.com

www.londonoffice.co.uk

the
londonoffice.co.uk

40 ST JAMES'S PLACE SW1