



NEWLY REFURBISHED FOUR BEDROOM FAMILY HOME

Sherfield Avenue, Rickmansworth, Hertfordshire, WD3 1NQ

ROBSONS

- **STUNNING MODERN KITCHEN/UTILITY**
- **RECEPTION ROOM**
- **RECEPTION/BEDROOM FOUR**
- **DOWNSTAIRS WC**
- **DOWNSTAIRS SHOWER ROOM**
- **CONSERVATORY/BREAKFAST ROOM**
- **THREE BEDROOMS**
- **FAMILY BATHROOM**
- **SOUTH FACING GARDEN**
- **OWN DRIVEWAY**

Robsons are pleased to showcase this beautiful newly refurbished four bedroom semi detached family home, situated conveniently to Rickmansworth Town Centre.

The property boasts a spacious and contemporary double aspect light and bright reception room with bay window, parquet flooring and a feature wood burner.

The stunning modern kitchen features spotlights, a range of brand new integrated appliances along with ample floor and wall units, a sizeable breakfast bar and French doors leading into the garden. The ground floor is complimented with a utility room, downstairs WC, bedroom four/reception room with ensuite shower room and a rear conservatory/breakfast room with views over the garden.





To the first floor there are three newly decorated bedrooms two of which have modern fitted wardrobes and a good sized family bathroom with a bath and walk in shower.

Outside this lovely home boasts a well-maintained, sizeable rear garden that is mainly laid to lawn with a small patio area and a path leading to an outbuilding with power and electricity. To the front there is a driveway allowing off-street parking for several cars.

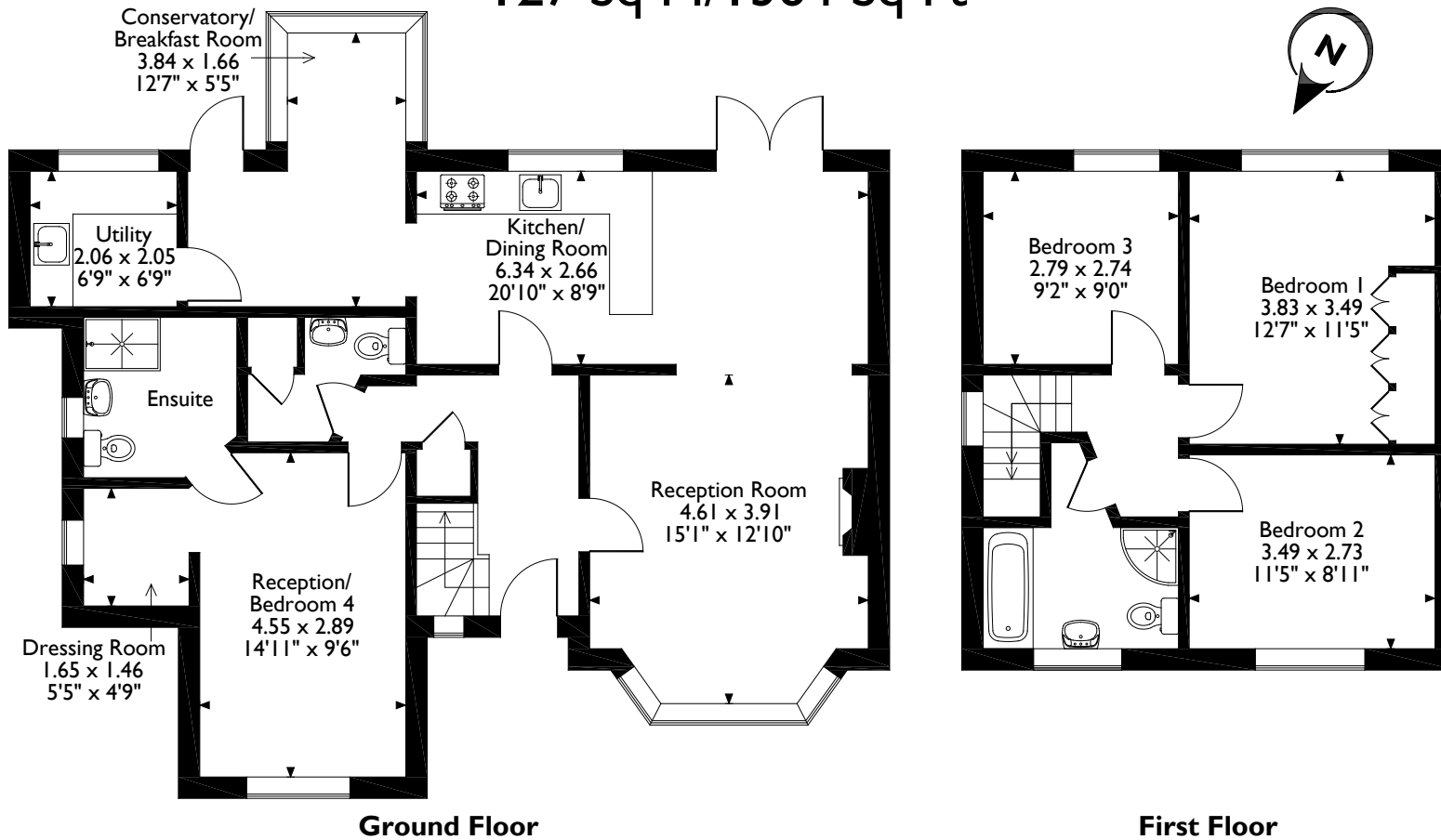
Rickmansworth town centre has a wide range of boutique shops, coffee houses, restaurants and major supermarkets. The Metropolitan and Chiltern line train services connect you to London Baker Street, Marylebone Station and beyond. The M25 motorway is available at both junction 17 and 18, connecting you to the national motorway network. Major London airports are also within reach. The area is well served for good quality private and state schools for all ages. Chorleywood and Rickmansworth offer everything for the sporting individual from rugby, cricket, football, tennis, horse riding and golf. Rickmansworth Aquadrome is an ideal setting for walks, sailing, fishing and water skiing.

Tenure: Freehold
Local Authority: Three Rivers District Council
Council Tax: Band F
Energy Efficiency Rating: Band D



Sherfield Avenue, Rickmansworth, Hertfordshire

Approximate Gross Internal Area 127 Sq M / 1364 Sq Ft



Please note that the location of doors, windows and other items are approximate and this floorplan is to be used for illustrative purposes only. Unauthorized reproduction is prohibited.



130 High St, Rickmansworth WD3 1AB
Tel: 01923 77762 rickmansworth@robsonswb.com
www.robsonswb.com

