



**A LUXURY TWO BEDROOM PENTHOUSE APARTMENT IN EXCESS OF 1,400 SQ.FT.**

Rickmansworth Road, Harefield, Uxbridge, UB9 6JY

**ROBSONS**



## A LUXURY TWO BEDROOM PENTHOUSE APARTMENT IN EXCESS OF 1,400 SQ.FT

- LOUNGE/DINING ROOM/KITCHEN
- PRINCIPAL BEDROOM WITH ENSUITE  
SHOWER ROOM
- SECOND BEDROOM
- FAMILY BATHROOM
- IN EXCESS OF 1400 SQ.FT.
- ALLOCATED PARKING SPACE

### Description

An impressive, modern and contemporary two-bedroom, two-bathroom penthouse apartment in excess of 1,400 sq.ft., situated in the heart of Harefield Village, within easy reach of local schools, amenities and transport links.

The apartment comprises a very spacious lounge/dining room with high ceilings, two double-glazed front aspect sash windows and one double-glazed side aspect sash window. The stylish kitchen features a range of tasteful units with quartz work surfaces, integrated appliances and a separate utility cupboard.





The principal bedroom boasts a luxury fully tiled ensuite shower room with shower cubicle with sliding glazed door, heated towel rail, two velux windows and eaves storage cupboard. The second bedroom is fully carpeted with a velux skylight. Completing the apartment is a very spacious and modern fully tiled family bathroom with bath tub and shower above, ceiling spotlights, heated towel rail and mirror with sensor-controlled lighting.

Externally, this fabulous apartment benefits from one allocated parking space with a key operated bollard.

### **Location**

The apartment is located in the heart of Harefield village and is perfectly positioned to enjoy views over the village green, which is directly opposite and features a picturesque duck pond. The property is a moments walk to the bustling high street with its shops, schools and amenities. Harefield village provides easy access to the A40/M40 and M25 together with larger shopping centres including Uxbridge, Rickmansworth and Watford.

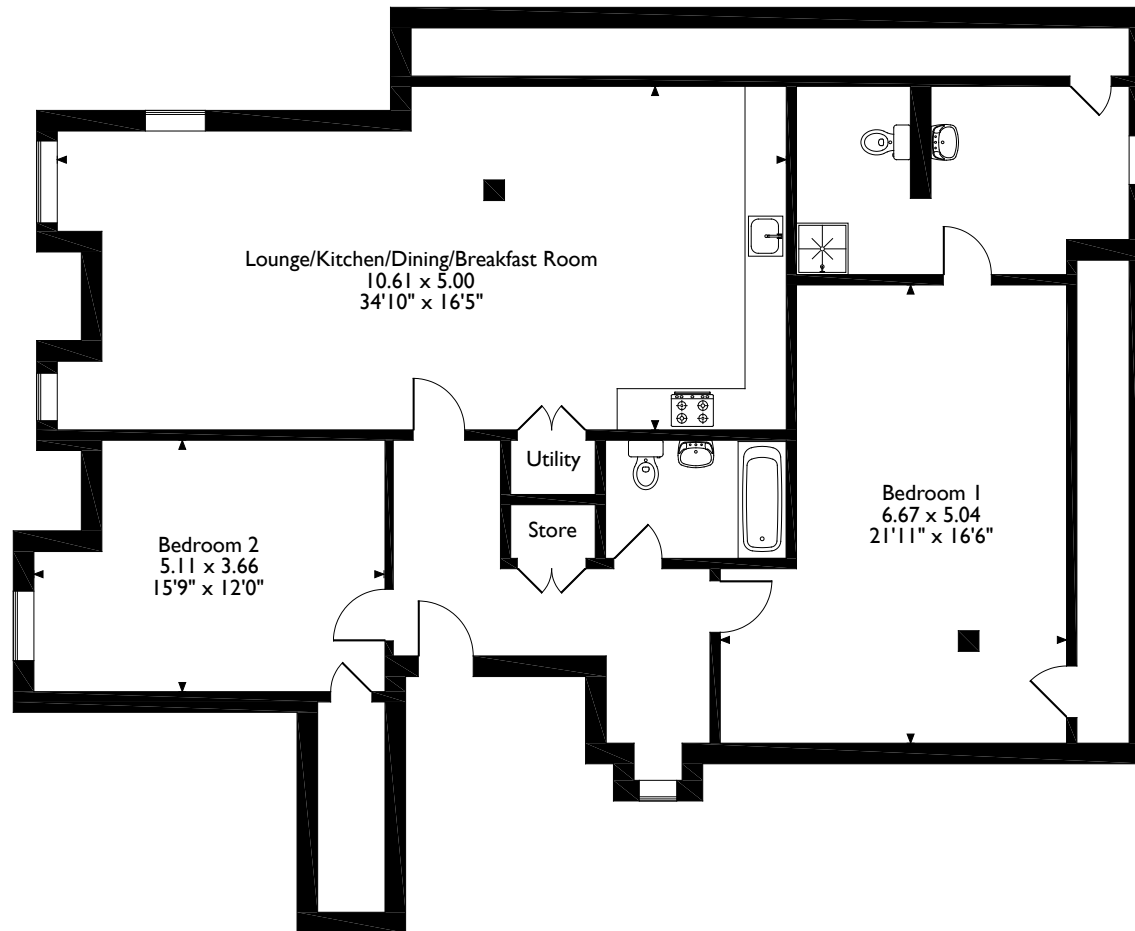
### **Additional Information**

Tenure: Leasehold  
Lease Length: 125 years from 2019  
Ground Rent: £380.00 pa  
Local Authority: Hillingdon Council  
Council Tax: Band D  
Energy Efficiency Rating: Band C





Rickmansworth Road Harefield, Uxbridge  
Approximate Gross Internal Area  
131 Sq M/1407 Sq Ft



Please note that the location of doors, windows and other items are approximate and this floorplan is to be used for illustrative purposes only. Unauthorized reproduction is prohibited.

**ROBSONS**

130 High Street, Rickmansworth, Hertfordshire, WD3 1AB  
Tel: 01923 777762 Rickmansworth@robsonswb.com

[www.robsonswb.com](http://www.robsonswb.com)

www.  
the  
londonoffice.co.uk  
40 ST JAMES'S PLACE SW1