



IMPRESSIVE 2 BEDROOM, 2 BATHROOM SECOND FLOOR BALCONY APARTMENT

Willow Court, Springwell Lane Rickmansworth, Hertfordshire, WD3 8UZ

ROBSONS

IMPRESSIVE TWO BEDROOM, TWO BATHROOM SECOND FLOOR BALCONY APARTMENT

- RECEPTION ROOM WITH BALCONY
- KITCHEN
- PRINCIPAL BEDROOM WITH ENSUITE
- FURTHER DOUBLE BEDROOM
- FAMILY BATHROOM
- ALLOCATED PARKING SPACE
- COMMUNAL GARDENS

Description

This impressive two-bedroom, two-bathroom second floor apartment offers bright and spacious accommodation with the added bonus of a balcony with stunning views and is located within a tranquil setting.

The property has an intercom system providing access to the communal entrance hall. The property has a bright and spacious reception room with a door to the balcony with superb views into the distance. Double doors lead through to the modern, fitted kitchen, with ample floor and base units, together with an electric oven and hob and space for appliances.





There is a good-sized principal bedroom with a modern en-suite shower room. There is also a second double bedroom and a family bathroom. The property has additional storage/coat cupboard in the hallway.

Externally, this apartment benefits from an allocated parking space, visitor parking and communal gardens, together with access to some lovely walks and scenery around Rickmansworth Aquadrome and Stockers Lake.

Location

Rickmansworth town centre has a wide range of boutique shops, coffee houses, restaurants and major supermarkets. The Metropolitan and Chiltern line train services connect you to London Baker Street, Marylebone Station and beyond. The M25 motorway is available at both junction 17 and 18, connecting you to the national motorway network. The area is well served for good quality private and state schools for all ages. Chorleywood and Rickmansworth offer everything for the sporting individual from rugby, cricket, football, tennis, horse riding and golf.

Additional Information

Tenure: Leasehold

Lease Length: 125 years from 1st January 2000

Service Charge: £2744,40 pa

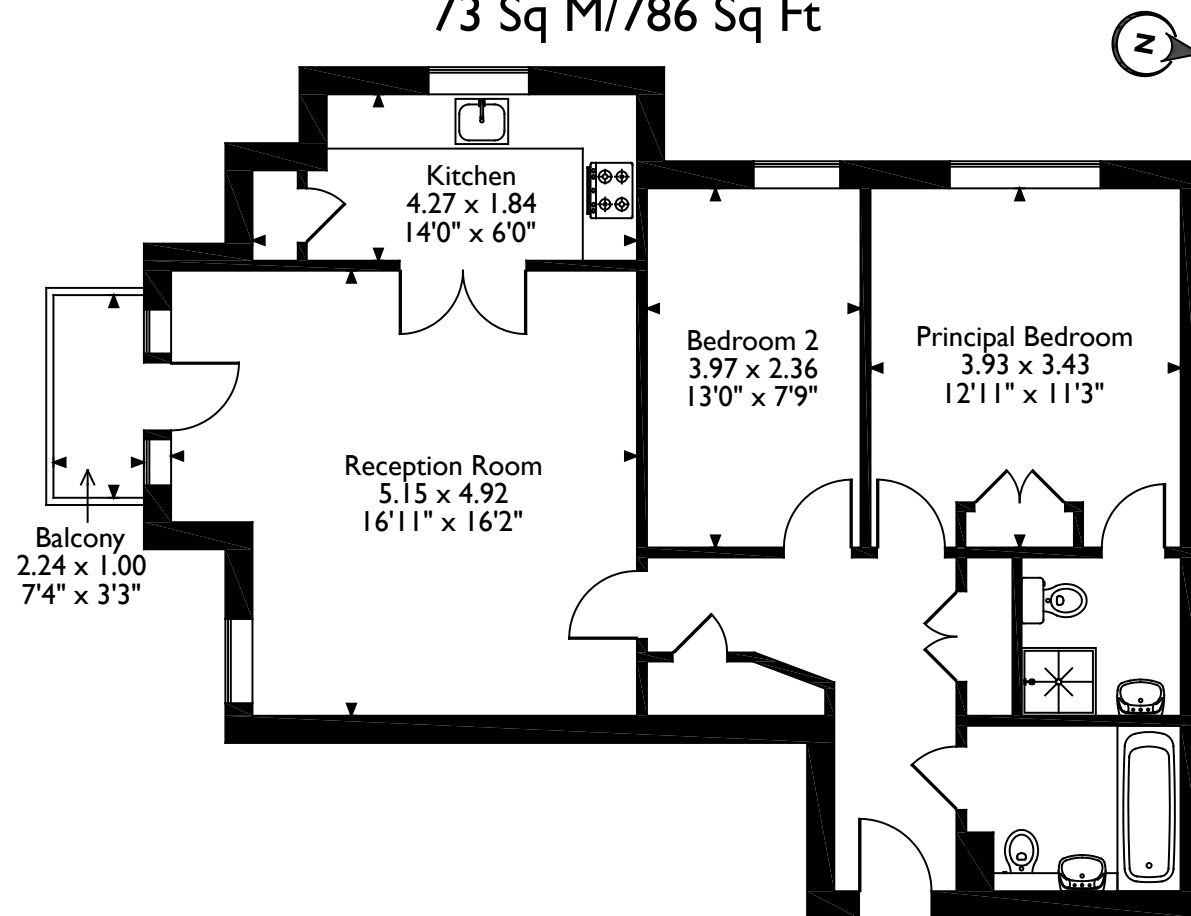
Local Authority: London Borough of Hillingdon

Council Tax: Band E

Energy Efficiency Rating: Band C



Springwell Lane, Rickmansworth, Hertfordshire
Approximate Gross Internal Area
73 Sq M/786 Sq Ft



Second Floor

Please note that the location of doors, windows and other items are approximate and this floorplan is to be used for illustrative purposes only. Unauthorized reproduction is prohibited.

ROBSONS

130 High Street, Rickmansworth, Hertfordshire, WD3 1AB

Tel: 01923 777762 Rickmansworth1@robsonswb.com

www.robsonswb.com

www.

the
londonoffice.co.uk

40 ST JAMES'S PLACE SW1