



CHARMING TWO BEDROOM COTTAGE IN A PRIME LOCATION

Uxbridge Road, Rickmansworth, Herts, WD3 8DP



CHARMING TWO BEDROOM COTTAGE IN A PRIME LOCATION

Uxbridge Road, Rickmansworth, Herts, WD3 8DP

- LOUNGE & DINING ROOM
- KITCHEN
- TWO BEDROOMS
- FAMILY BATHROOM
- ATTRACTIVE REAR GARDEN
- WALKING DISTANCE TO STATION

This charming two bedroom cottage has many characterful features, such as exposed brick walls and stunning feature fire places in most of the rooms and is a short walk to Rickmansworth station.

Internally there is lounge with wooden floor and a beautiful feature fire place, a separate dining room with an exposed brick wall with feature surround leading to the light and bright kitchen with a range of fitted cupboards, two sash windows and a door leading out to the garden.





To the first floor there are two double bedrooms, both with feature fire places and wooden floors and a spacious part tiled family bathroom with a skylight.

This attractive cottage has a good sized rear garden which is laid to lawn with mature shrubs and hedges and a patio area to enjoy al fresco dining during the summer months.

Rickmansworth town centre has a wide range of boutique shops, coffee houses, restaurants and major supermarkets. The Metropolitan and Chiltern line train services connect you to London Baker Street, Marylebone Station and beyond. The M25 motorway is available at both junction 17 and 18, connecting you to the national motorway network. Major London airports are also within reach. The area is well served for good quality private and state schools for all ages. Chorleywood and Rickmansworth offer everything for the sporting individual from rugby, cricket, football, tennis, horse riding and golf. Rickmansworth Aquadrome is an ideal setting for walks, sailing, fishing and water skiing.

Tenure: Freehold

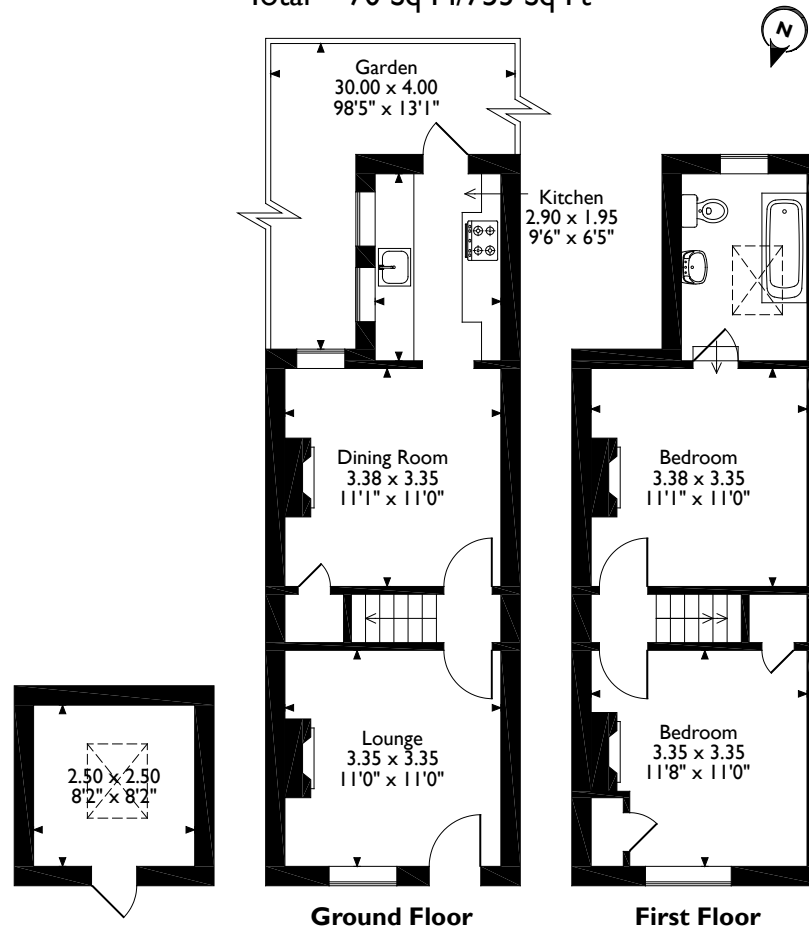
Local Authority: Three River District Council

Council Tax: Band D

Energy Efficiency Rating: Band D



Uxbridge Road, Mill End, Rickmansworth, Hertfordshire
Approximate Gross Internal Area
Main House = 64 Sq M/688 Sq Ft
Outbuilding = 6 Sq M/65 Sq Ft
Total = 70 Sq M/753 Sq Ft



Please note that the location of doors, windows and other items are approximate and this floorplan is to be used for illustrative purposes only. Unauthorized reproduction is prohibited.

ROBSONS

130 High St, Rickmansworth WD3 1AB
Tel: 01923 777762 rickmansworth@robsonswb.com
www.robsonswb.com

www.
the
londonoffice.co.uk
40 ST JAMES'S PLACE SW1