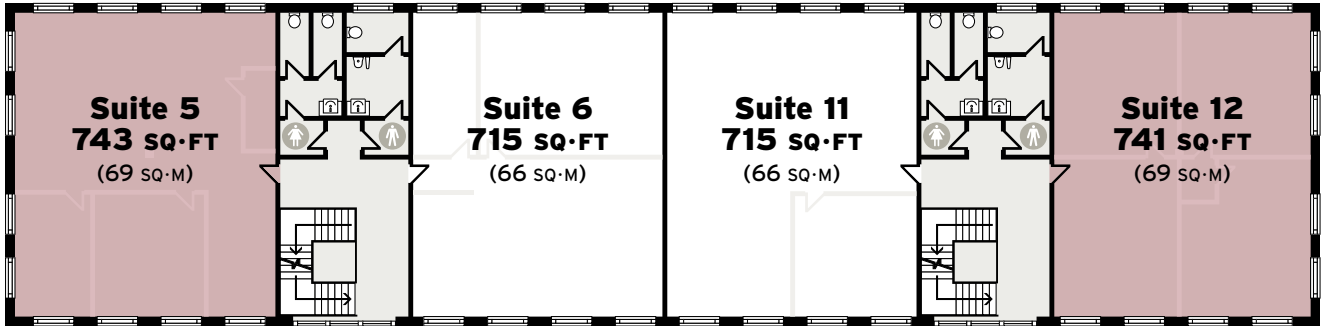


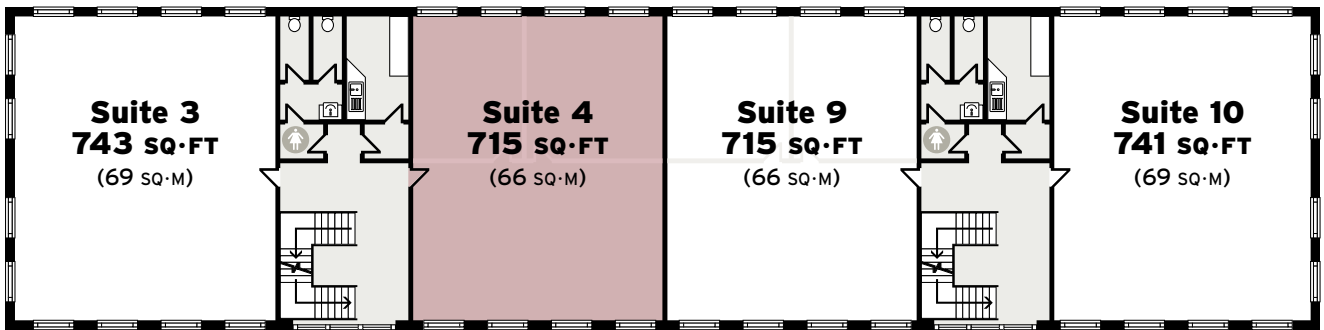
OFFICE SUITES

AFFORDABLE | ACCESSIBLE

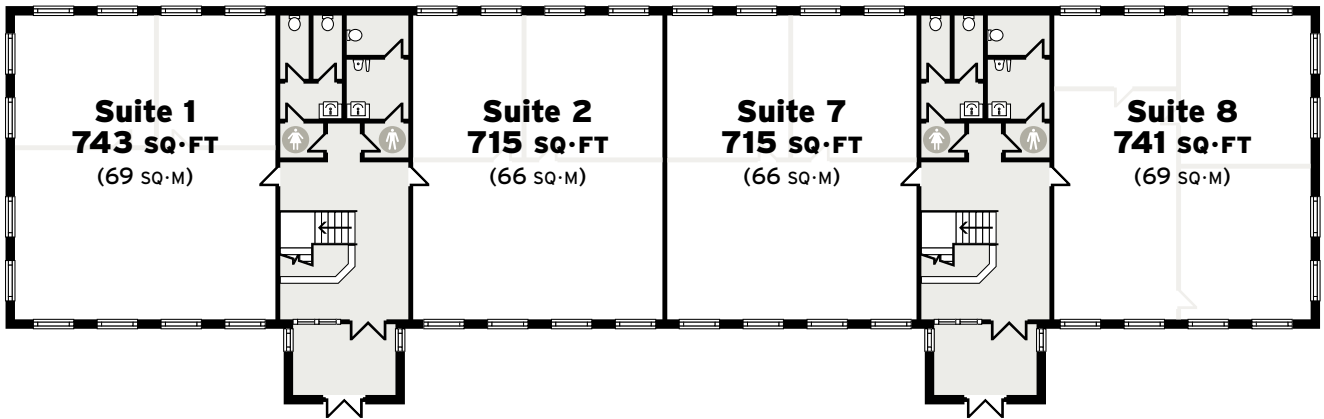
SECOND FLOOR



FIRST FLOOR



GROUND FLOOR



Wilmslow House is an ideal property for growing businesses looking to thrive in a lively town centre.

- On-site parking
- All-inclusive packages
- 24-hour access
- Heating
- Kitchen facilities
- Intercom access
- High speed internet connection

AVAILABILITY

Space	Size (sq.ft.)	Price (PCM)
2nd Floor - Suite 12	741	741
2nd Floor - Suite 5	743	743
1st Floor - Suite 4	715	715

SUPERFAST BROADBAND AVAILABLE:



WILMSLOW HOUSE

