

St Sovereign
House

STOCKPORT ROAD, CHEADLE, SK8 2EA



SOVEREIGN HOUSE

Sovereign House is a three-storey office development with suites from 150 square feet and ample on-site parking. Economical annual licenses include rent, business rates, service charge, insurance, heating, and electricity are available. Immediate occupation and simple rental terms—one month's rent and deposit upfront—ensure an easy, affordable setup for tenants.



Indicative image



We've got it covered

The office suites are fully refurbished to the following high specification, offering an excellent working environment.



24/7 Access



CCTV



Building Manager



Parking



6-Person
Passenger Lifts



Easy Motorway
Access



Communal
Kitchen



LED
Lighting



Flexible
Contracts



Perimeter
Heating



Small Business
Rates Relief

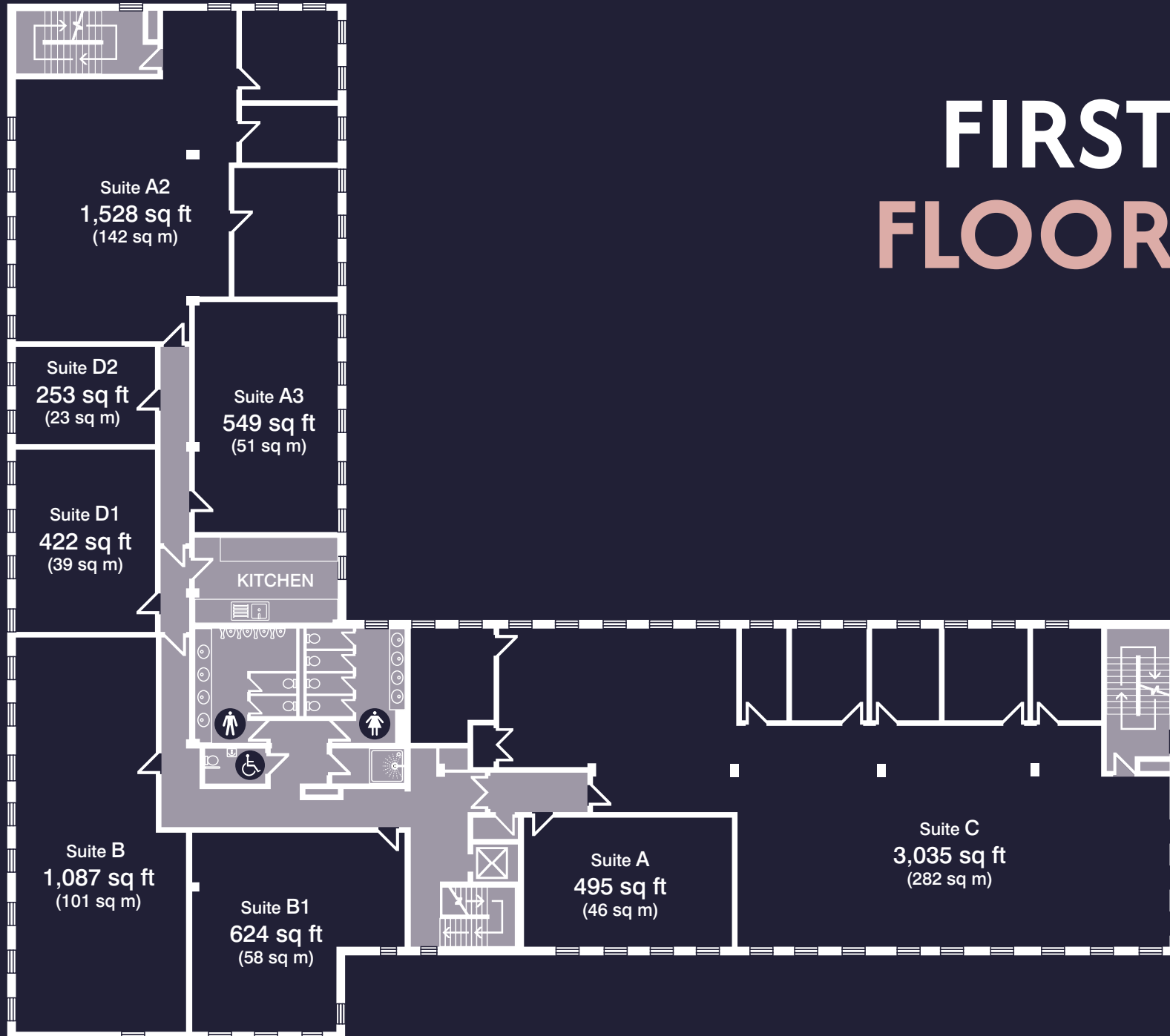


High Speed
Internet

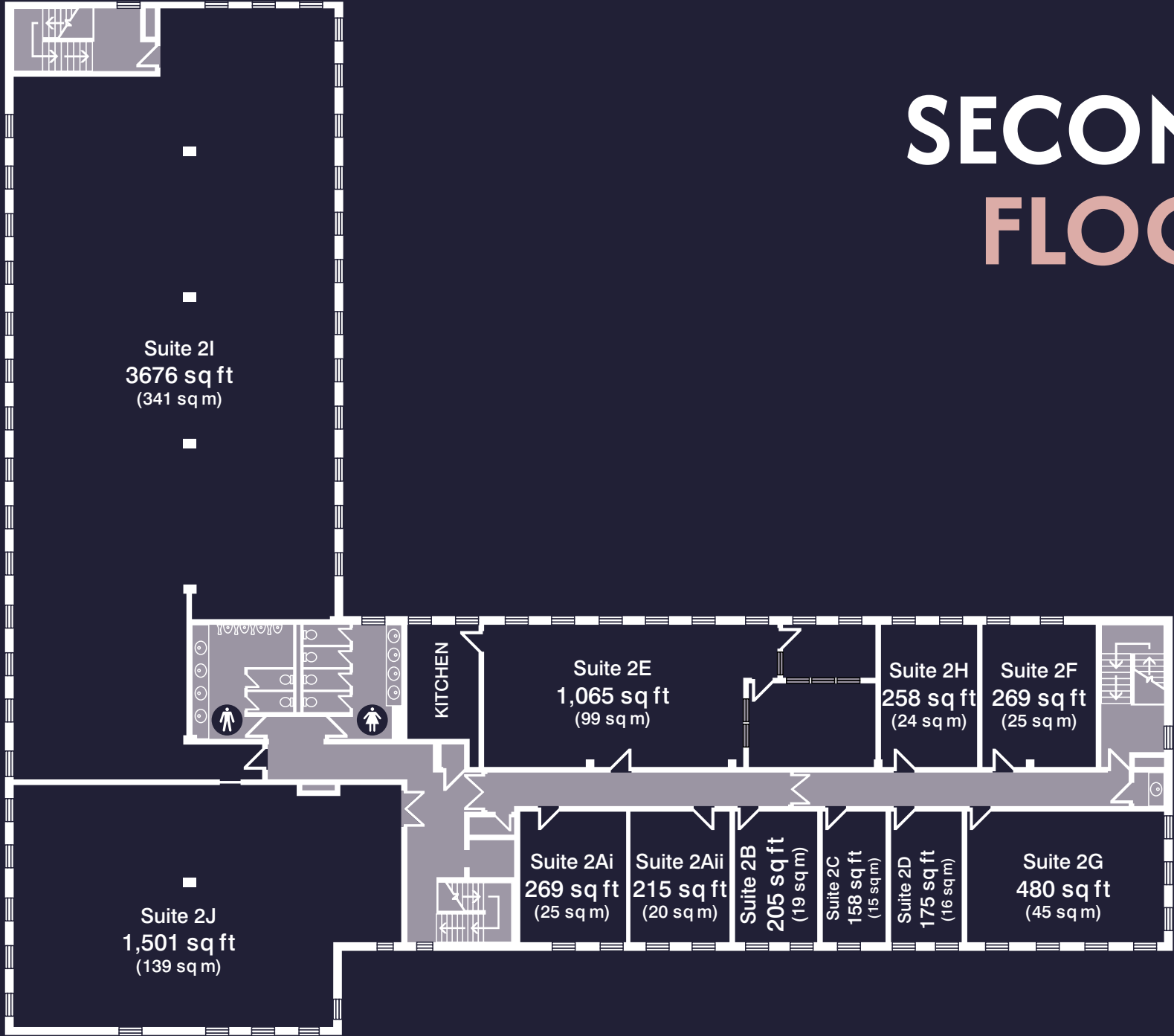
GROUND FLOOR



FIRST FLOOR



SECOND FLOOR





LOCAL AMENITIES & TRAVEL



Retail

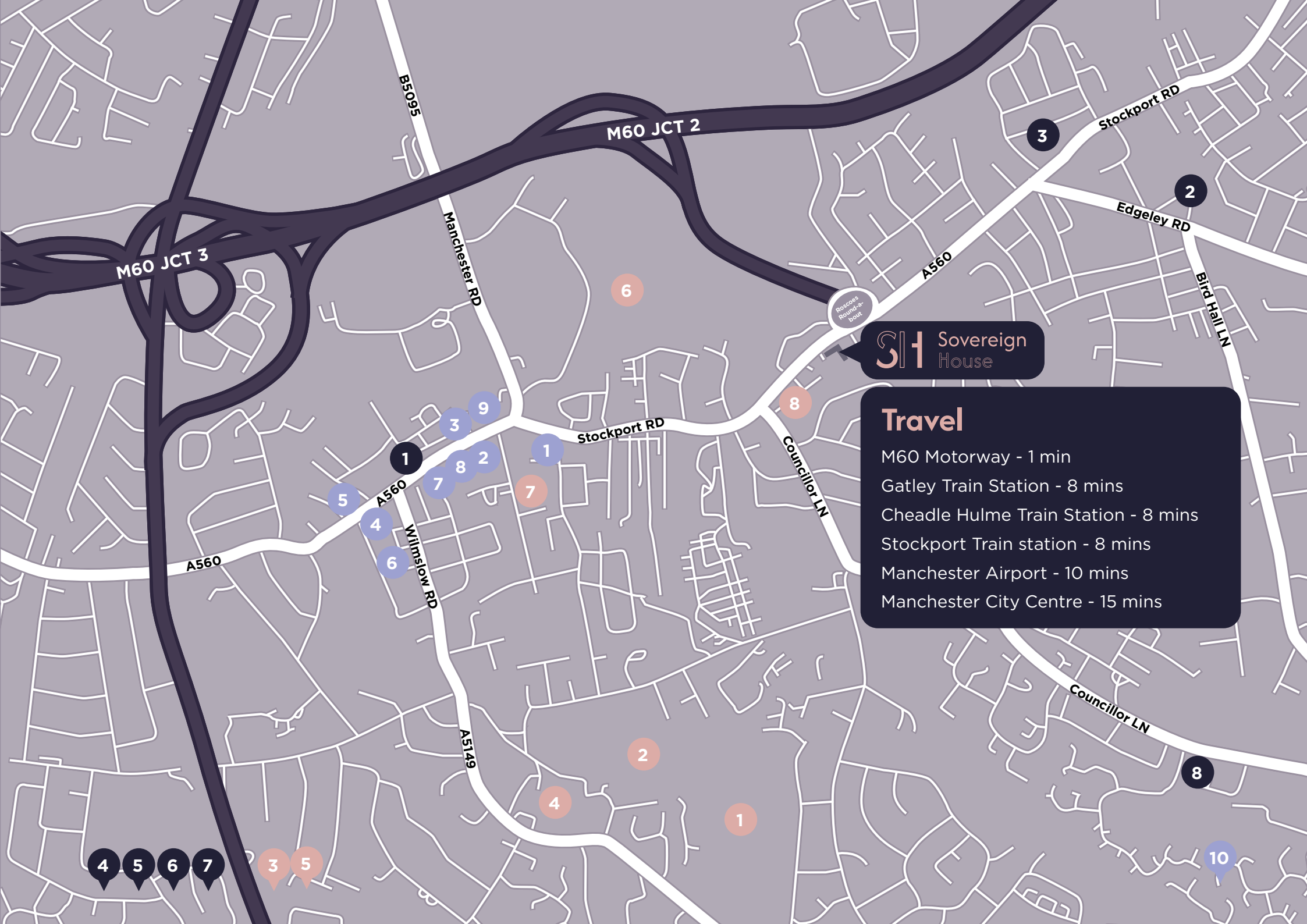
1. Cheadle Village - Post Office, Local Shops
2. Morrisons
3. Aldi
4. Cheadle Royal - John Lewis, Sainsbury's
5. Stanley Green - TK Maxx, B&Q, Homesense, Halfords
6. Handforth Dean - M&S, Tesco, JD, Next, Pets at Home
7. Lakeland
8. Lidl

Eating out

1. The Royal Oak
2. Hitchki
3. Brezo Lounge
4. Bellinis
5. Aamchi Mumbai
6. La Cueva
7. Turkish Bistro
8. Starbucks
9. Costa
10. The March Hare

Leisure & general

1. Cheadle Golf Club
2. Life Leisure
3. David Lloyd
4. Village Gym
5. Bruntwood Park
6. Abney Hall Park
7. Cheadle Library
8. Halfords



Sovereign House

Travel

- M60 Motorway - 1 min
- Gatley Train Station - 8 mins
- Cheadle Hulme Train Station - 8 mins
- Stockport Train station - 8 mins
- Manchester Airport - 10 mins
- Manchester City Centre - 15 mins

St Sovereign
House

STOCKPORT ROAD, CHEADLE, SK8 2EA

Orbit
Developments

01625 588200
www.orbit-developments.co.uk

DISCLAIMER: Whilst the statements contained in these particulars are given in good faith and as a general guide to the property, they do not form any part of an offer or contract. Neither the Lessor or their Agents can accept responsibility for them. Interested parties must satisfy themselves by inspection, or otherwise, as to the correctness of these particulars. (0624)