

**Lyme Green**

RETAIL & BUSINESS PARK

SAT NAV: SK11 0TB

# TO LET Unit 2b

## 10,097 sq ft (938 sqm)

E planning consent



**Orbit**  
Developments





**Lyme Green**

RETAIL & BUSINESS PARK



- Established retail park
- Affluent Cheshire location
- 111,822 sq ft
- 270,000 catchment
- Complementary food and retail offer
- 475 free parking spaces

Located to the south east of Manchester, Macclesfield is an affluent Cheshire town with a population of just over 150,000. The M6, M60 and M56 motorways are all within easy driving distance and the town is close to a number of wealthy villages such as Alderley Edge, Bramhall, Poynton, Prestbury and Hale.

Lyme Green Retail Park is an established out of town retail destination situated on the southern fringe of Macclesfield. It forms part of a busy mixed use development accessed from the A523 and has a number of popular retail brands in its current line-up, including Next, Currys, Pets at Home, Bensons for Beds and Matalan. The retail park also has the attraction of a Superbowl UK, a Burger King and an adjacent business park as well as a strong automotive draw with Mercedes, Audi, Vauxhall and Volkswagen dealerships on site.

The Lyme Green Retail Park catchment has a total population of 270,000 and is dominated by affluent ACORN groups, serving the surrounding towns of Leek, Buxton, Whaley Bridge, Congleton and Holmes Chapel in addition to those mentioned above.



next

bensons for beds

Currys PC World

Pets at Home

MATALAN

the food WAREHOUSE

home bargains

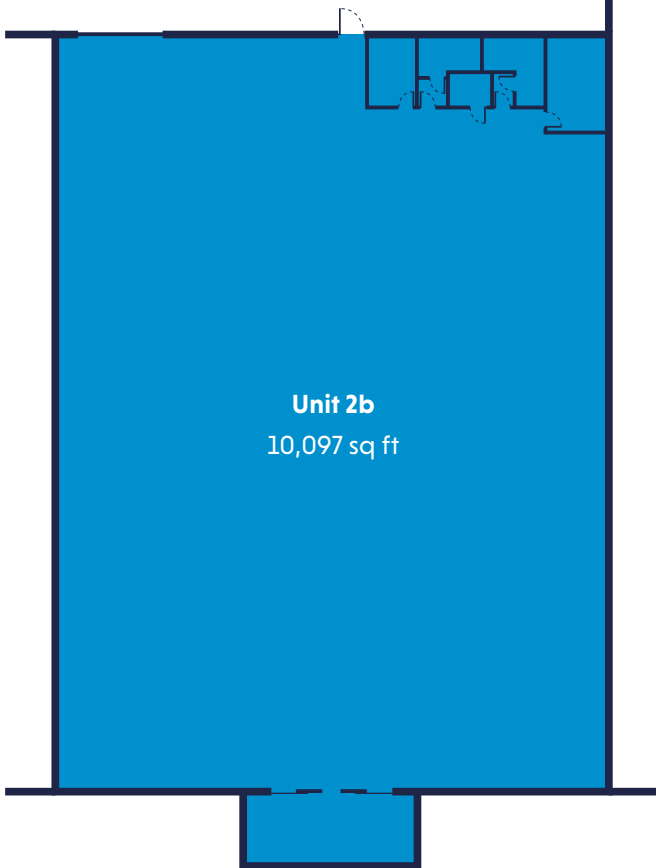


Macclesfield Town Centre 10 mins

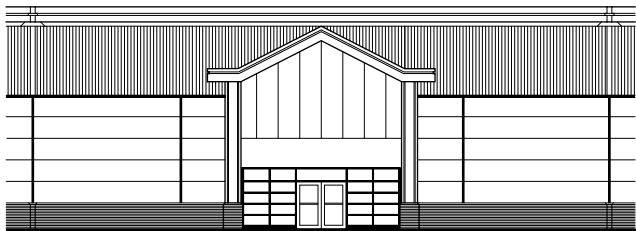


## OCCUPANTS

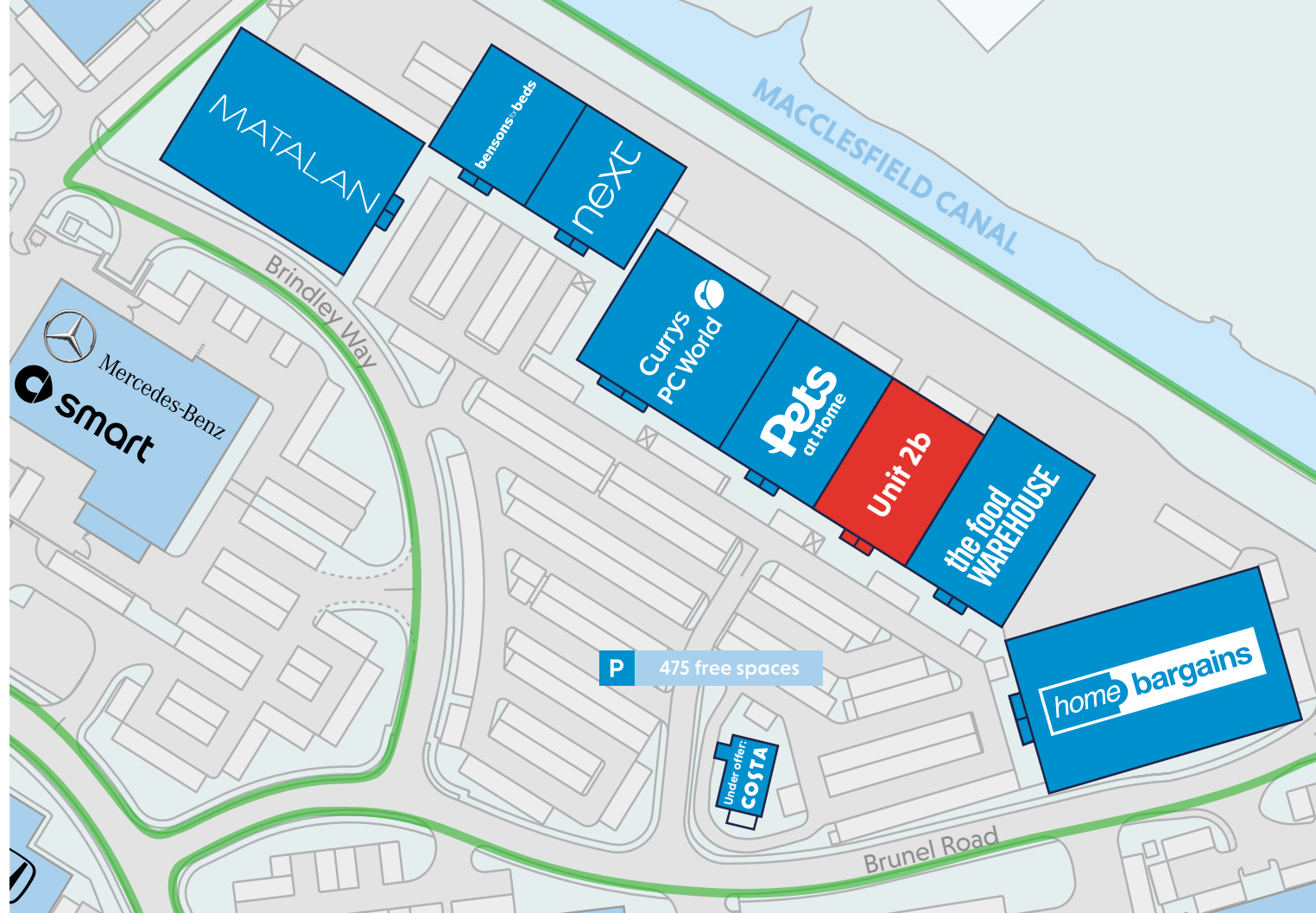
<b>Unit 1</b>	Home Bargains	25,672 sq ft	<b>Unit 7</b>	Bensons for Beds	8,180 sq ft
<b>Unit 2a</b>	Food Warehouse	12,209 sq ft	<b>Unit 8</b>	Matalan	20,000 sq ft
<b>Unit 2b</b>	<b>AVAILABLE</b>	<b>10,097 sq ft</b>	<b>Drive Thru'</b>	Burger King	2,182 sq ft
<b>Unit 3</b>	Pets at Home	10,200 sq ft	<b>Drive Thru'</b>	<b>Under offer to Costa</b>	<b>1,850 sq ft</b>
<b>Units 4 &amp; 5</b>	Currys/PC World	15,114 sq ft			
<b>Unit 6</b>	Next	8,168 sq ft			



Layout plan



Front elevation



## AVAILABLE UNITS

Unit 2b

10,097 sq ft (938 sqm)





**Overall catchment 270,000**



### DRIVE TIMES

Macclesfield	10 mins
Congleton	17 mins
Alderley Edge	23 mins
Wilmslow	26 mins
Knutsford	32 mins
Stockport	40 mins
Manchester	53 mins

**Orbit**  
Developments

**01625 588200**

[www.orbit-developments.co.uk](http://www.orbit-developments.co.uk)

**MORGAN  
WILLIAMS**

**020 7493 4455**

[www.morganwilliams.co.uk](http://www.morganwilliams.co.uk)

Contact: Dan Gazzard

next

bensons for beds

MATALAN

Pets  
at Home



Currys  
PC World

the food  
WAREHOUSE

home bargains

DISCLAIMER: These particulars are believed to be correct at time of going to press, but the developer reserves the right to change the scheme in the future. However, the vendors/ lessors and agents of this property give notice that: (1) These particulars are intended as a general outline only, for the guidance of prospective purchasers or tenants, and do not constitute the whole or any part of an offer or contract. (2) They cannot guarantee the accuracy of any description, dimension or other details contained in these particulars and prospective purchasers or tenants should not rely on them as statements of fact or representation, but must satisfy themselves as to the accuracy of such details. (3) No employee of the agents has any authority to make or give any representation or warranty, or enter into any contract whatsoever in relation to the property. (4) Prices and rents quoted in these particulars maybe subject to VAT in addition. March 2024.

Bella Design & Marketing [www.belladesign.co.uk](http://www.belladesign.co.uk)