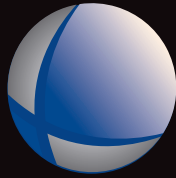


**Stanley Green  
Business Park**

A34 • Handforth Dean • Cheadle • Cheshire



TO LET : UNIT E5  
**Business Unit**  
with Enclosed Yard Area



**5,521 sq ft (513 sq m)**

Business unit with enclosed yard area

**5,521 sq ft** (513 sq m)



## LOCATION

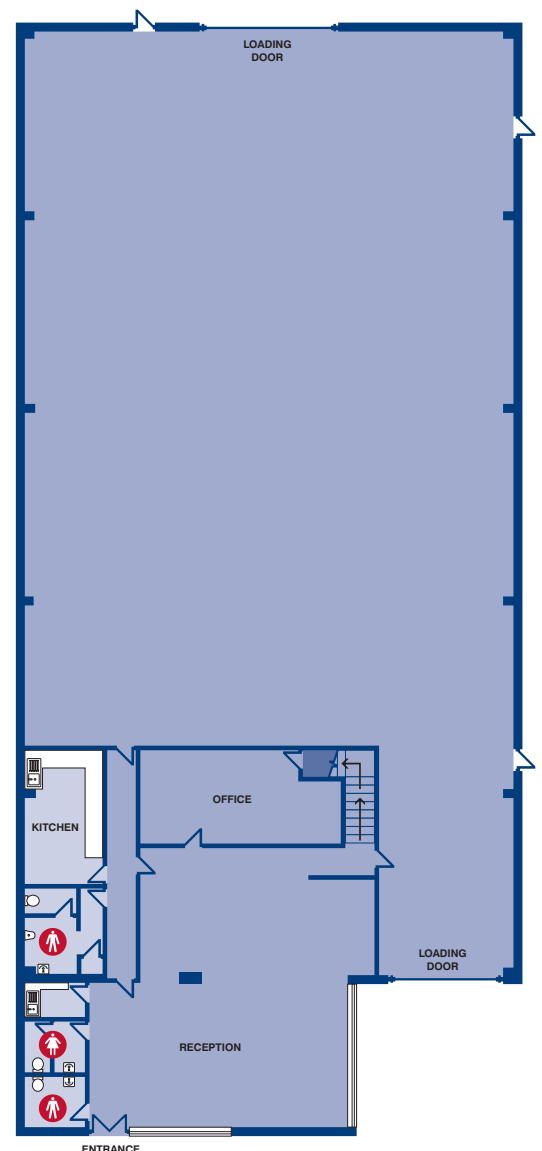
E5 is a business unit comprising 5,521 sq ft with exclusive enclosed yard area and parking

Unit E5 is located within Stanley Green Business Park, a strategic landmark site 9 miles south of Manchester City Centre, 5 miles south west of Stockport, 2.5 miles east of Manchester Airport and 2 miles north of Wilmslow. The site is part of an established mixed-use development which has attracted a variety of Retail, Trade, Industrial and Office users.

## ACCOMMODATION

The accommodation provides the following :

- Maximum height to ridge 20 ft approx (6 m approx)
- Eaves height 12 ft approx (4 m approx)
- Loading access doors to front and rear
- Enclosed yard area to the rear and parking to front of the unit
- 3 phase power supply
- Male and female WC's
- Upvc double glazing to the front elevation
- Reception and office areas to ground and first floors



**Orbit**  
Developments

For further information or to arrange a viewing please contact :

**01625 588200**  
[www.orbit-developments.co.uk](http://www.orbit-developments.co.uk)

DISCLAIMER : Whilst the statements contained in these particulars are given in good faith and as a general guide to the property, they do not form any part of an offer or contract. Neither the Lessor or their Agents can accept responsibility for them. Interested parties must satisfy themselves by inspection, or otherwise, as to the correctness of these particulars. (0224)