

A photograph of a two-story brick building with a gabled roof. The building has several windows, some with white frames and others with grey frames. A sign above the entrance reads "MILLBANK HOUSE". A set of stairs with a black metal railing leads to the entrance. The image is overlaid with a semi-transparent grey filter.

MILLBANKHOUSE UNIT 1

GROUND & FIRST FLOOR

1,100 - 2,337 SQ. FT.

RIVERSIDE BUSINESS PARK | WILMSLOW | SK9 1DL

UNIT 1 1,100 – 2,337 SQ.FT.

Millbank House is a period mill conversion that combines the best of both modern and traditional design features.

The building is based within Riverside Business Park in Wilmslow, one of the most desirable areas in South Manchester.

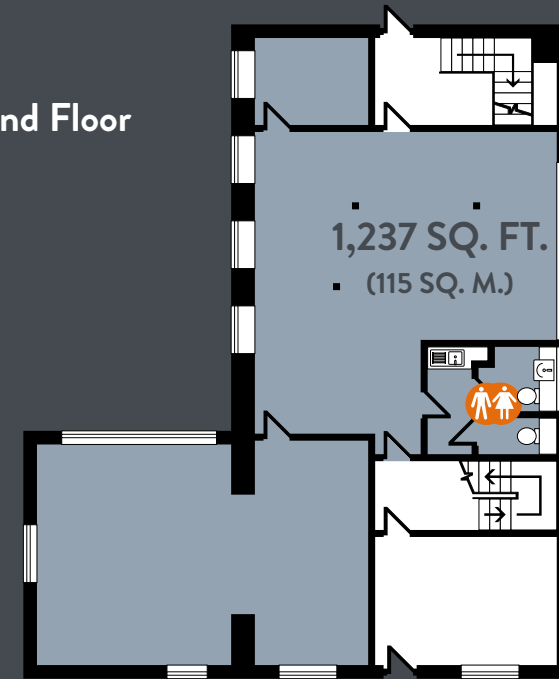
The space provides a work space ideal for Trade counter use but with the flexibility to accommodate a variety of uses.

The property also benefits from connections to superfast broadband via The 4TECH for added convenience. (Arrangement and contracts to be set up by customer).

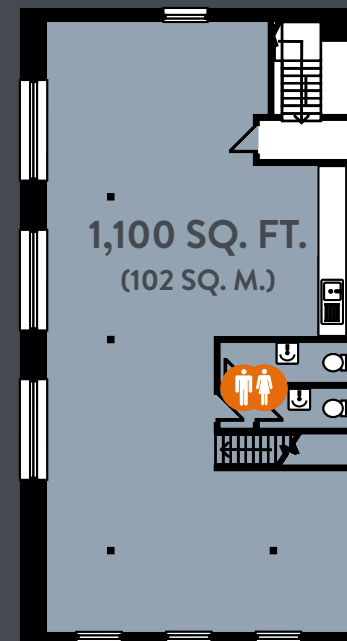
The workspace benefits from the following specification:

- Self contained
- Business park setting
- On-site parking
- Suspended ceiling with LED lighting

Ground Floor



First Floor



Situated in the Cheshire town of Wilmslow, Millbank House benefits from a vast number of amenities on its doorstep.

Convenience stores such as Waitrose, Sainsbury's and Tesco Express are within walking distance alongside cafés and coffee shops: like Costa, Casa Italia, Caffé Nero and Starbucks.

Local bars and restaurants include Thai restaurant Phantong Thai, Cibo and Wood Fire Smoke, plus Smoke Cafe & Wine Bar and Zumuku Sushi and Nourish.

CHARACTER OFFICE SPACE IN
A PERIOD MILL CONVERSION



CONTACT US

Orbit
Developments

01625 588200
www.orbit-developments.co.uk

Misrepresentation Act 1967. Unfair Contract Terms Act 1977 The Property Misdescriptions Act 1991. These particulars are issued without any responsibility on the part of the agent and are not to be construed as containing any representation or fact upon which any person is entitled to rely. Neither the agent nor any person in their employ has any authority to make or give any representation or warranty whatsoever in relation to the property. (1223)