

# THE PARKWAY 5

## KEY:

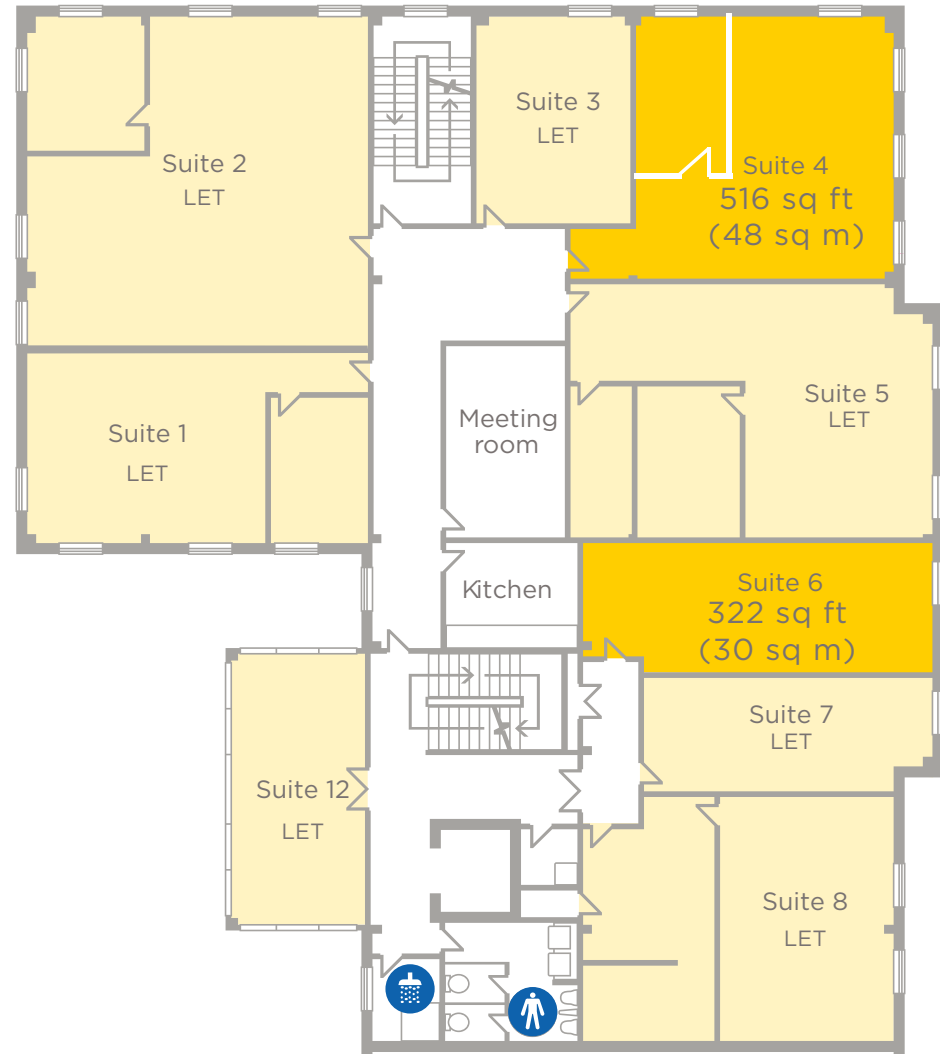
- Available
- Let

- Air conditioned workspace
- Raised access floors for flexible workstation layouts
- DSE Compliant lighting design
- High speed fibre connection – Activation within 24 hours
- 24/7 Access
- Cycle Parking and Shower

To discuss how your own requirements can be accommodated at Parkway 5 please contact a member of the leasing team.

**Orbit** **01625 588200**  
 Developments  
 A MEMBER OF THE EMERSON GROUP **www.orbit-developments.co.uk**

[www.theparkway.co.uk/parkway-5/](http://www.theparkway.co.uk/parkway-5/)



**CUSHMAN & WAKEFIELD**  
 0161 235 8998  
 cushmanwakefield.co.uk

**CANNING O'NEILL**  
 canningoneill.com  
 0161 244 5500

All figures quoted are subject to change and are exclusive of VAT where applicable and subject to contract. Service charges are budget figures. Please confirm with Orbit Developments for details of what is included. Business rates should be confirmed with the relevant local authority and are only provided as an accurate estimate and therefore may vary from those figures quoted. Please contact Orbit Developments for further details on any figures quoted and for specific terms including available incentive packages. (0424)