

The background features a dark, almost black, field. A large, light gray triangular shape is formed by a series of vertical lines of varying lengths, creating a sense of depth and perspective. The lines are more densely packed on the left side and become sparser towards the right, forming a peak at the top left and a base at the bottom right.

twenty
five.

WATER LANE



twenty
five.

**Contemporary,
adaptable workspace in
a refurbished building in
the heart of Wilmslow
town centre**

25 Water Lane



twenty
five.



Workspace that Works

25 Water Lane has recently undergone a stunning refurbishment with a new reception providing a warm welcome. The first floor now benefits from a newly fitted open plan kitchen/break out area with exposed services, a meeting room and Zoom rooms.



Air-Conditioning



Building Manager



Parking



Exposed Services



Internet Connectivity



24/7 Access



4-Person Lifts



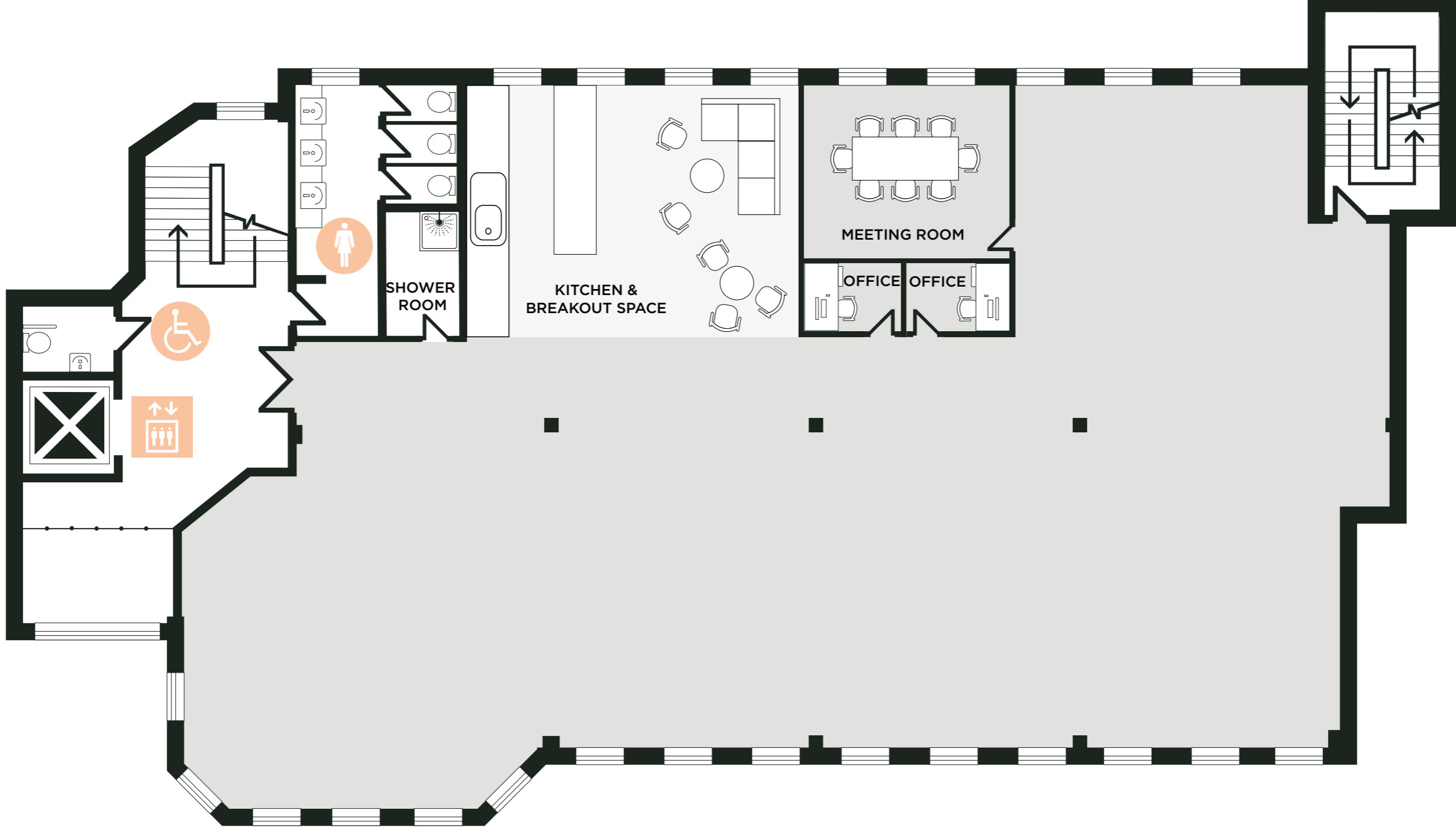
EPC A



twenty five.

First Floor

3,638 SQ. FT.
338 SQ. M.





twenty
five.

twenty
five.



Working in Wilmslow

Situated conveniently close to the M56 and M60 motorways, Wilmslow provides effortless access to the M6 via the A556. Manchester Airport, less than 5 miles away, can be reached in approximately 10 minutes by car through the A555 (Manchester Airport Eastern Link) and Junction 6 of the M56.

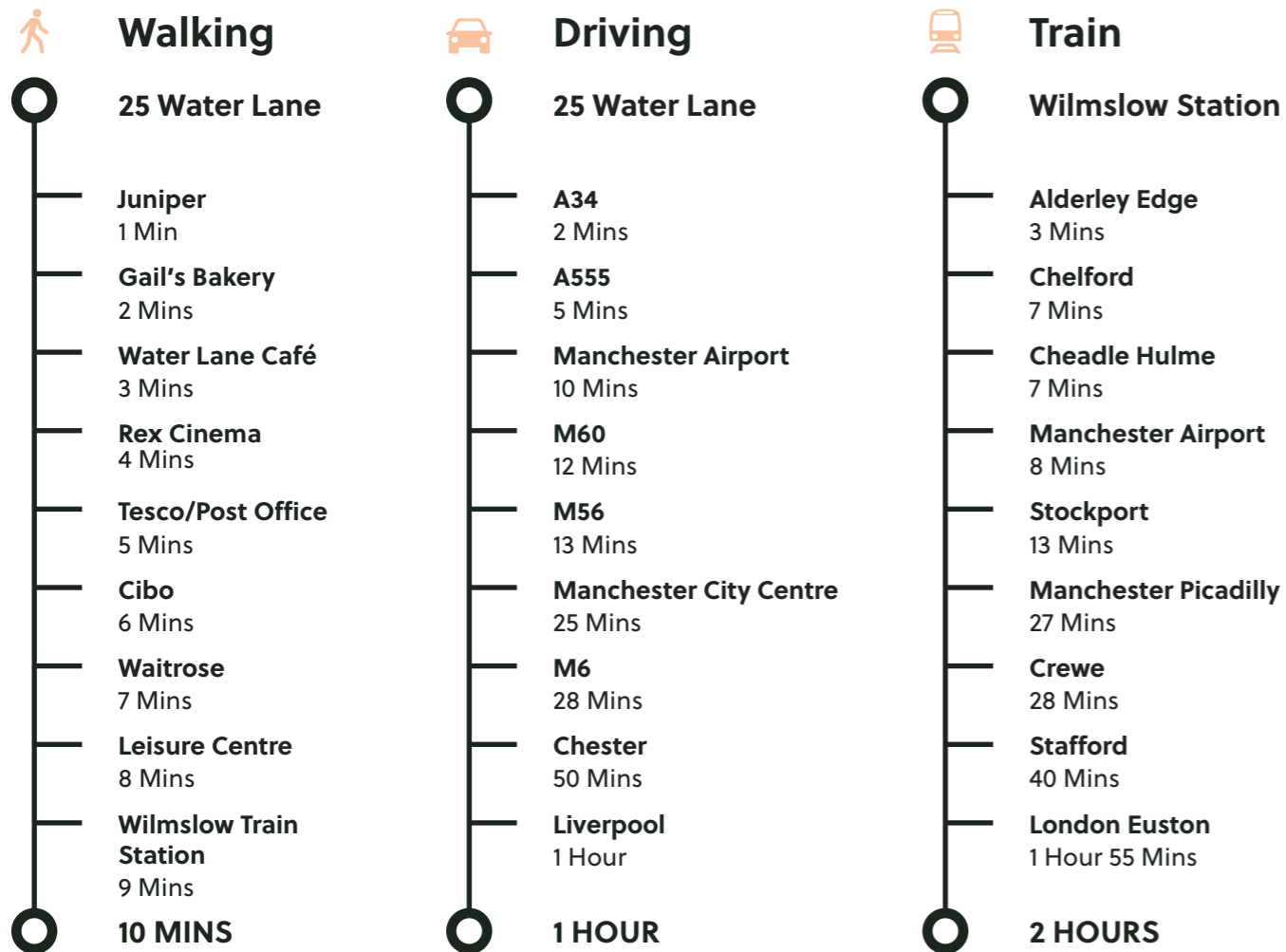
The location boasts more than just practical commuting, with a leisure centre within walking distance and an abundance of shops and restaurants, ensuring a well-rounded and easily accessible environment.



twenty five.

Perfectly Placed for Professionals

You're just moments from the heart of Wilmslow, with a variety of local conveniences within walking distance. The town offers easy access by road and train, making commuting a breeze. Wilmslow railway station provides frequent services, connecting you to major destinations with ease. High-speed trains to Manchester Picadilly and London Euston run regularly.



twenty
five.
WATER LANE

Wilmslow, SK9 5AR

Orbit
Developments

01625 588200
www.orbit-developments.co.uk

DISCLAIMER: Whilst the statements contained in these particulars are given in good faith and as a general guide to the property, they do not form any part of an offer or contract. Neither the Lessor or their Agents can accept responsibility for them. Interested parties must satisfy themselves by inspection, or otherwise, as to the correctness of these particulars. Orbit Investments (Properties) Limited Co. No. 2274745. Registered in England and Wales. (0624)