



# CRESTA HOUSE

WATER LANE WILMSLOW SK9 5AL

**Cresta House is located on Water Lane in the heart of Wilmslow town centre, amidst a variety of shops, bars and restaurants. The building benefits from excellent communication links.**

Wilmslow is located in close proximity to the M56 and M60 motorways and the M6 is easily accessed via the A556. The new A555 link road connects the town to Manchester Airport, providing a quicker than ever route.

Wilmslow railway station is a five minute walk from Cresta House, providing regular commuter services to Manchester Piccadilly and Manchester Airport, as well as frequent InterCity services to London Euston.



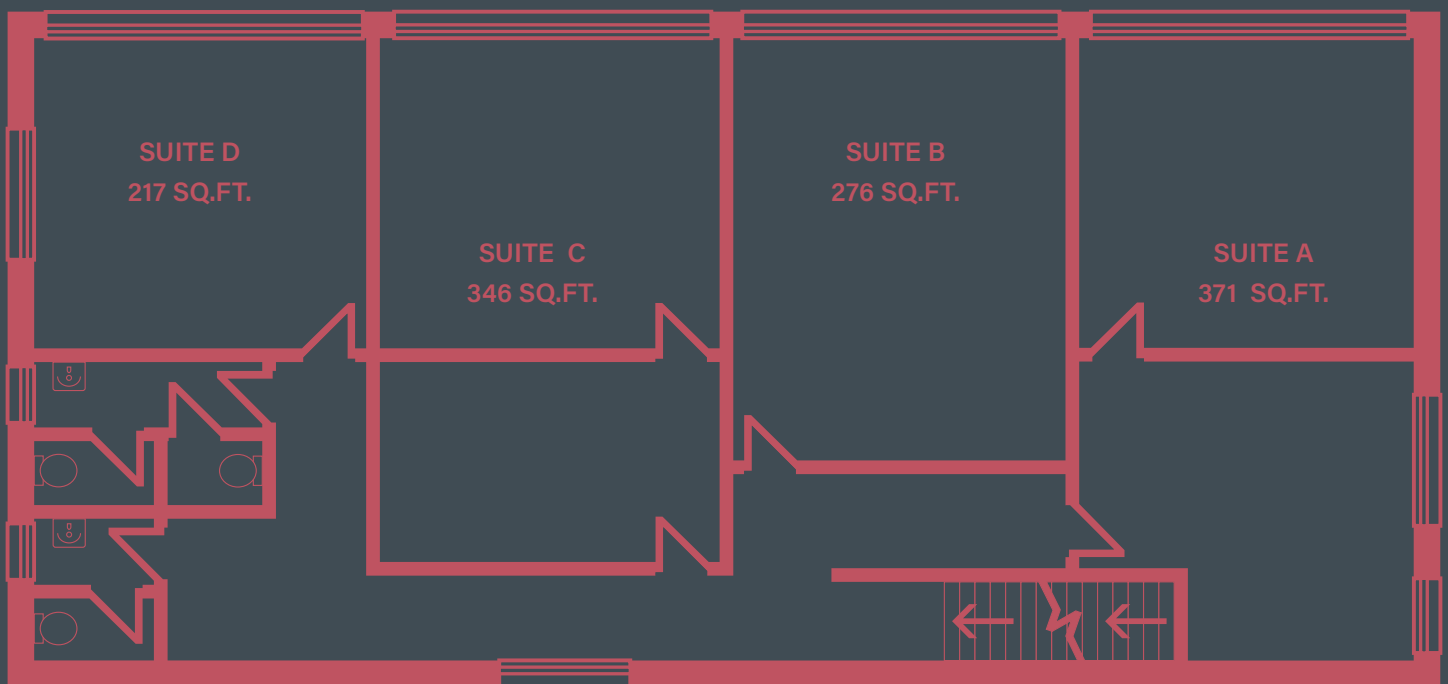
# CRESTA HOUSE

WATER LANE WILMSLOW SK9 5AL

Cresta House is situated directly above the popular Juniper restaurant and amongst various high street and independent stores this is a highly sought after location for a wide variety of business sectors.

The available office suite is located on the first floor and benefits from:

- Competitive and flexible lease terms
- Available for immediate occupation
- 24hr access
- Central location on Water Lane
- Potential small business rates relief



**Orbit**

**01625 588200**

[www.orbit-developments.co.uk](http://www.orbit-developments.co.uk)

DISCLAIMER: Whilst the statements contained in these particulars are given in good faith and as a general guide to the property, they do not form any part of an offer or contract. Neither the Lessor or their Agents can accept responsibility for them. Interested parties must satisfy themselves by inspection, or otherwise, as to the correctness of these particulars. (0323)