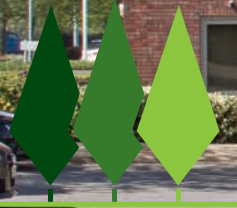


WINTERTON & BEECHFIELD OFFICES

High quality offices with excellent on-site car parking



LYME GREEN
BUSINESS & RETAIL PARK
MACCLESFIELD | SK11 0LP

A place to grow your business

Head just two miles south along the A523 London road from Macclesfield town centre and you'll discover an established, mixed-use business and retail park. Welcome to Lyme Green Business Park, an environment where conditions are perfect for business growth.

A TRUE COMMUNITY

Boasting convenient on-site amenities including Burger King, Pets at Home, Poundland, Currys/PC World, Matalan, Bensons for Beds, Next, Home Bargains and Superbowl UK.

As well as boasting convenient on-site amenities including well know high street brands, Lyme Green Business Park has a lot to offer in terms of a friendly business community.

Beechfield House provides a range of suites which are available on all-inclusive packages and ideal for growing and start-up businesses looking for flexible workspace in Macclesfield and East Cheshire.

“Working at Beechfield House has given us a great space to develop our business and a new sense of purpose. It’s convenient, bright and comfortable and the Emerson and Orbit team couldn’t be more helpful.”

TRACEY O'KEEFE
MANAGING DIRECTOR,
HOSPICE QUALITY PARTNERSHIP
BEECHFIELD HOUSE

We can also support you as your company grows or if you're looking for larger workspace on more conventional lease agreements. Both Beechfield House and Winterton House have space for a team of 15 to 25 people.

Combined with 24/7 access to the park and an on-site building manager to assist with any queries, it's clear to see why Hospice Quality Partnership have chosen Beechfield House as their base.

You'll be in good company at Lyme Green Business Park, home to companies such as Zuto, Axon IT, Things 3D and Blaze Networks.

Sat Nav: SK11 0LP



Winterton House

Wings from: **1,733 sq.ft.** (161 sq.m.)



Accommodation

SPECIFICATION

The accommodation is finished to a modern standard and incorporates the following features:

- Perimeter heating & double glazing
- LED lighting
- Full access raised floors
- Quality carpeting throughout

ADDITIONAL BENEFITS

- On-site building manager
- On-site parking
- 24-hour monitored access control system
- Male/female & disabled WCs
- 8-person passenger lift

EPC

Wnterton House has an Energy Performance Certificate rating of C68.



GROUND FLOOR

FIRST FLOOR

SECOND FLOOR

Beechfield House

Offices from: 119 sq.ft. (11 sq.m.)



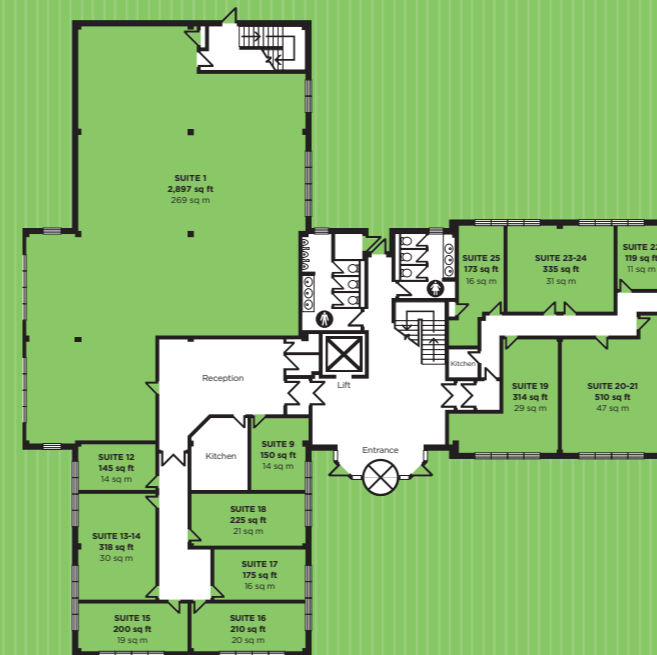
Accommodation

SPECIFICATION

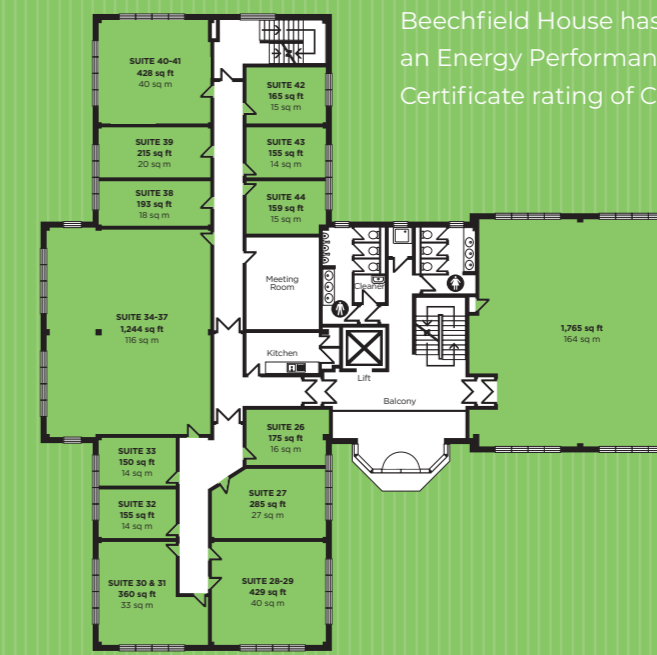
- Refurbished to a high standard
- Perimeter heating
- Meeting room available to hire
- Suspended ceilings
- LED lighting
- 8 person passenger lift
- Male, female, disabled WC's and shower facilities
- Modern fully fitted kitchen facilities
- Carpeted throughout
- Double glazed
- On-site parking
- Monitored 24-hour access control with CCTV
- High quality fixtures, fittings and finishes

EPC

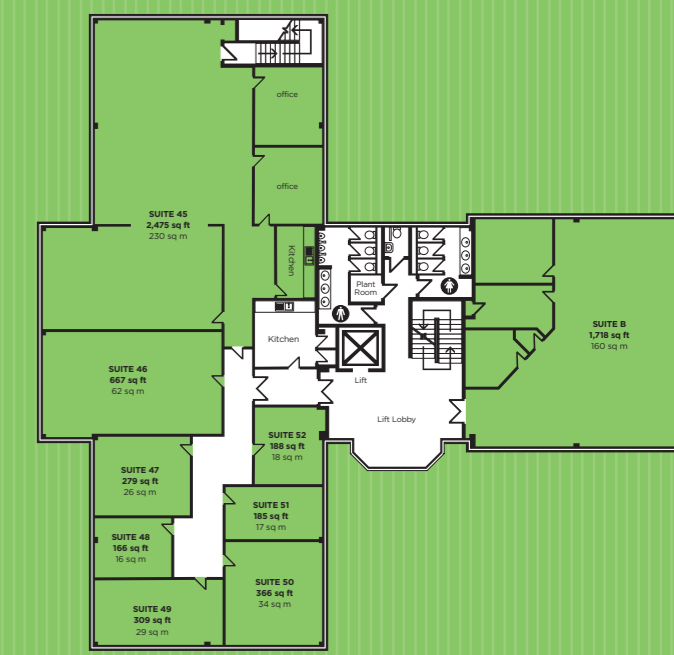
Beechfield House has an Energy Performance Certificate rating of C68.



GROUND FLOOR



FIRST FLOOR



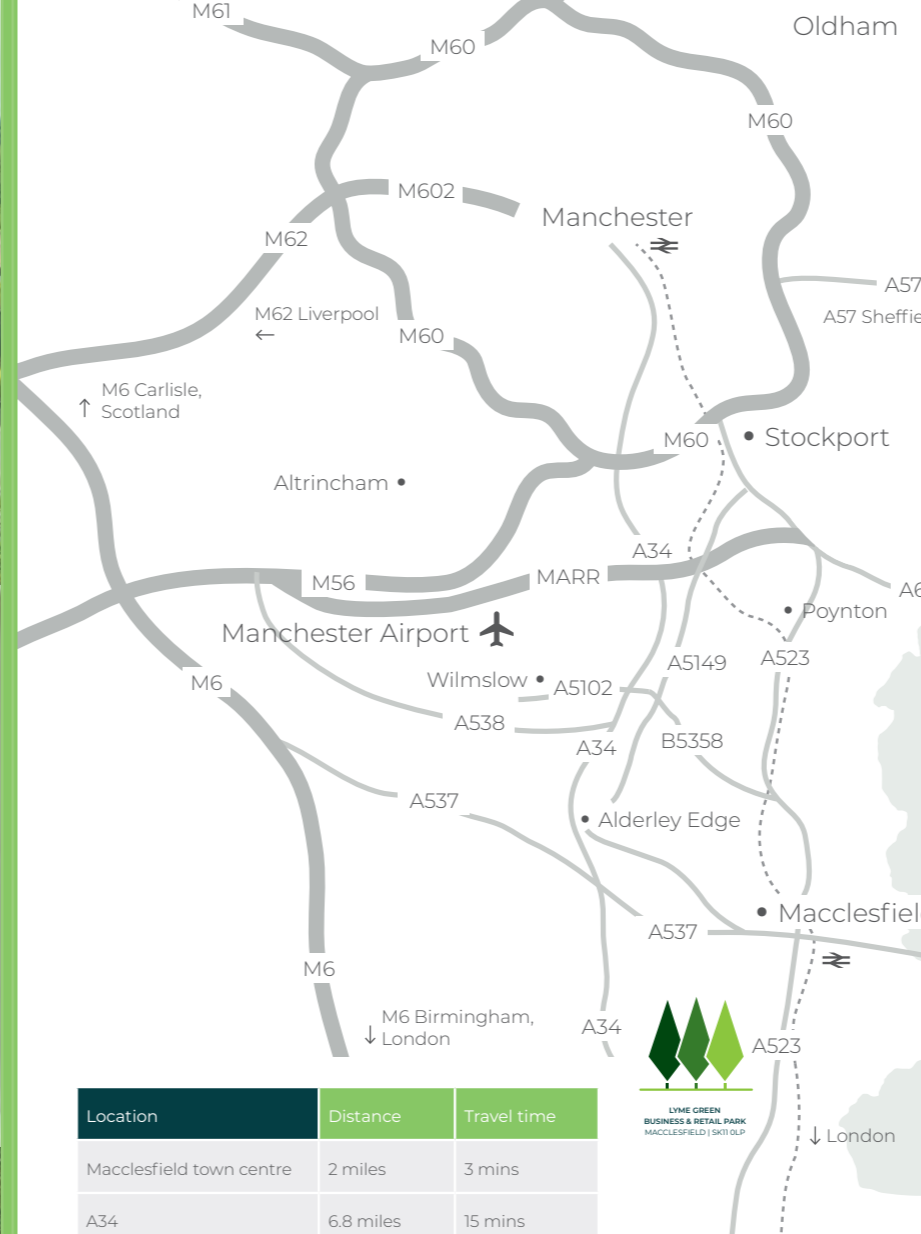
SECOND FLOOR

Beauty and convenience on your doorstep

Combining its rural charm with easy connectivity to key destinations such as London Euston and Manchester Airport, Macclesfield is ideally placed for business.

Just 2 miles from Tytherington Business Village is Macclesfield town centre, boasting a mainline train station, bus station and variety of high street stores such as Costa Coffee, Café Nero, and Pizza Express and independent retailers such as The Salt Bar, Italian restaurant Fina and the Picturedrome Macclesfield food/marketplace.

Alternatively, employees can enjoy a lunchtime walk on one of the many routes close to the business village. Take a breath of fresh air on a canal-side walk or head down Middlewood Way for an afternoon stroll.



Location	Distance	Travel time
Macclesfield town centre	2 miles	3 mins
A34	6.8 miles	15 mins
Manchester Airport	10 miles	25 mins
M56	10.7 miles	25 mins
M60	11 miles	22 mins
M6	16.5 miles	33 mins
Manchester city centre	17.7 miles	33 mins

Sat Nav: SK11 0LP

Hassle-free transport connections

TRAIN

Macclesfield's mainline train station benefits from frequent and direct Virgin Train services allowing you to arrive at London Euston station with ease in just under 2 hours or Manchester Piccadilly in less than 25 minutes.

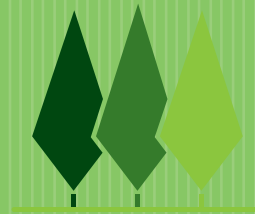
AIR

Manchester Airport provides over 200 direct flights to destinations across the world – ideal for global companies looking for a HQ in the North West.

BUS

Services run on a frequent basis from Macclesfield town centre and train station to Lyme Green for ultimate convenience.





LYME GREEN
BUSINESS & RETAIL PARK
MACCLESFIELD | SK11 0LP

Orbit
Developments

01625 588 200
orbit-developments.co.uk

DISCLAIMER: These Particulars are believed to be correct at time of going to Press, but the Developer reserves the right to change the scheme in the future. However, the Vendors/Lessors and Agents of this property give notice that: (1) These Particulars are intended as a general outline only, for the guidance of prospective purchasers or tenants, and do not constitute the whole or any part of an offer or contract. (2) They cannot guarantee the accuracy of any description, dimension or other details contained in these Particulars and prospective purchasers or tenants should not rely on them as statements of fact or representation, but must satisfy themselves as to the accuracy of such details. (3) No employee of the Agents has any authority to make or give any representation or warranty, or enter into any contract whatsoever in relation to the property. (4) Prices and rents quoted in these Particulars maybe subject to VAT in addition. (0323)