

# SOUTHGATE 2

WILMSLOW ROAD, CHEADLE, CHESHIRE SK8 3PW



**SOUTHGATE 2** totals 20,460 sq.ft. over three floors with newly created suites from 193 sq.ft. upwards.

On-site car parking is available, with further parking and public transport within the immediate vicinity. There are car parking spaces available with the building, at a ratio of 1:200 sqft

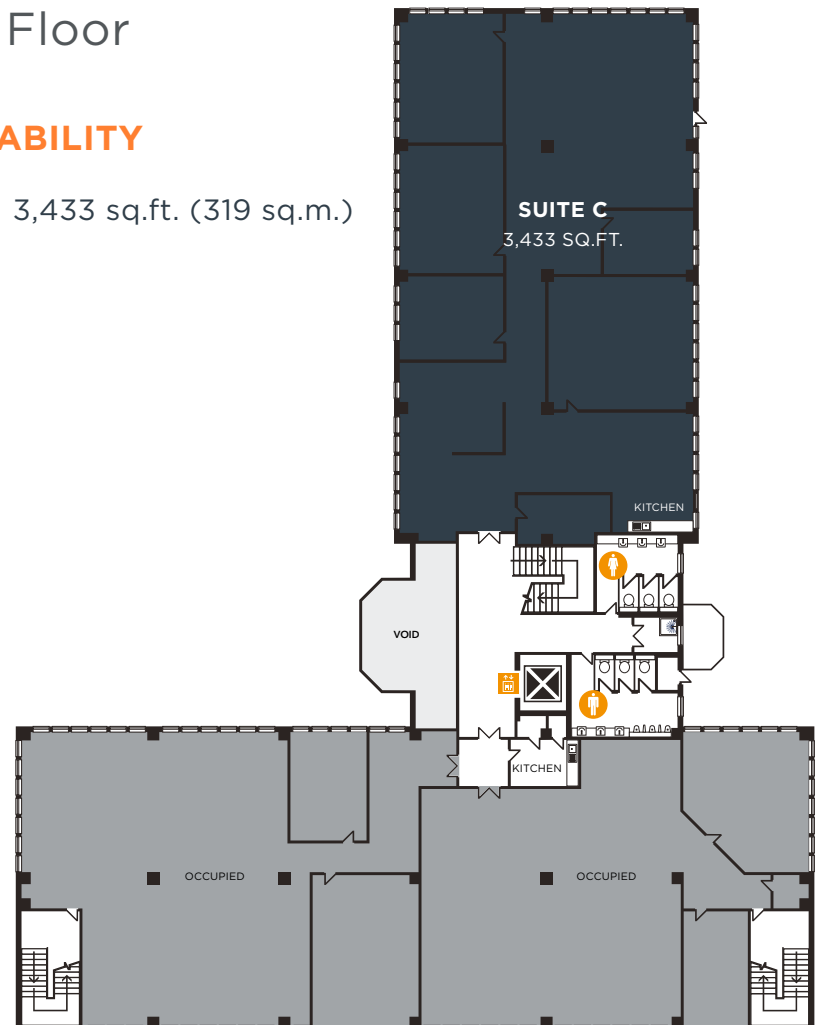
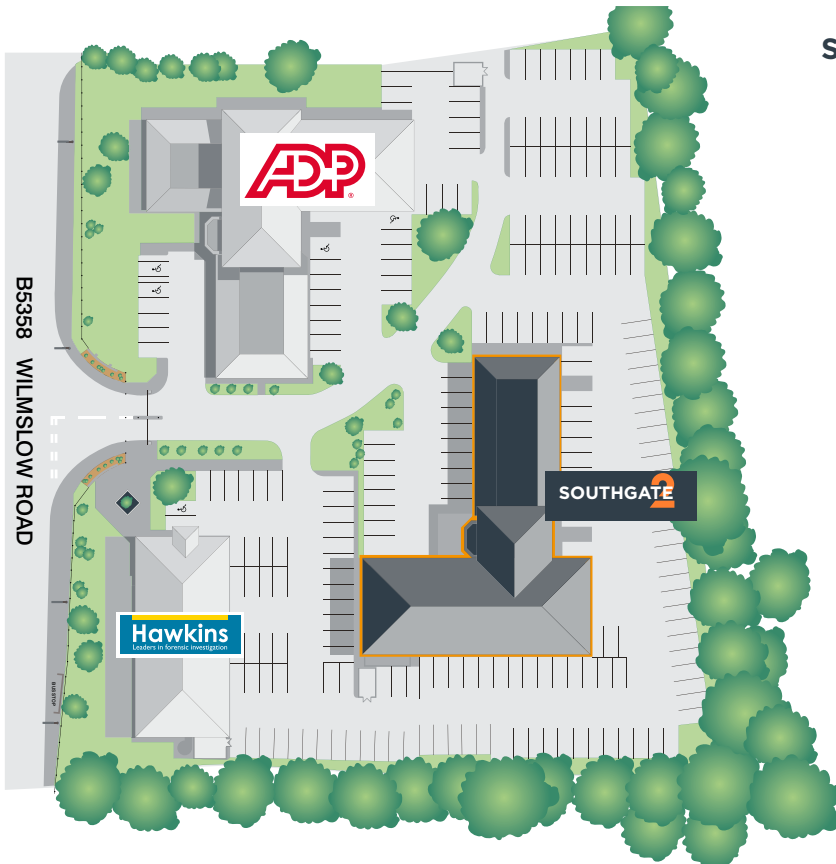
The whole building has undergone an extensive refurbishment both internally and externally which has included a new modern and impressive reception area, new toilets, showers and refurbished office space.

Southgate is a prominent established business park, offering high profile offices.

## First Floor

### AVAILABILITY

**Suite C** 3,433 sq.ft. (319 sq.m.)



# SOUTHGATE

WILMSLOW ROAD, CHEADLE, CHESHIRE SK8 3PW

A large orange graphic element resembling the number '2' is positioned to the right of the 'SOUTHGATE' text. It consists of a curved top section and a horizontal base section.

**Orbit**  
*Developments*

**01625 588200**

**[www.orbit-developments.co.uk](http://www.orbit-developments.co.uk)**

DISCLAIMER: These Particulars are believed to be correct at time of going to Press, but the Developer reserves the right to change the scheme in the future. However, the Vendors/Lessors and Agents of this property give notice that: (1) These Particulars are intended as a general outline only, for the guidance of prospective purchasers or tenants, and do not constitute the whole or any part of an offer or contract. (2) They cannot guarantee the accuracy of any description, dimension or other details contained in these Particulars and prospective purchasers or tenants should not rely on them as statements of fact or representation, but must satisfy themselves as to the accuracy of such details. (3) No employee of the Agents has any authority to make or give any representation or warranty, or enter into any contract whatsoever in relation to the property.

Orbit Investments (Properties) Limited Co. No. 2274745. Registered in England and Wales with registered offices at Emerson House Heyes Lane Alderley Edge Cheshire SK9 7LF. (0624)