

# ENTERPRISE POINT

SHARSTON, SOUTH MANCHESTER M22 9AF

High Quality  
Ground Floor  
Workspace

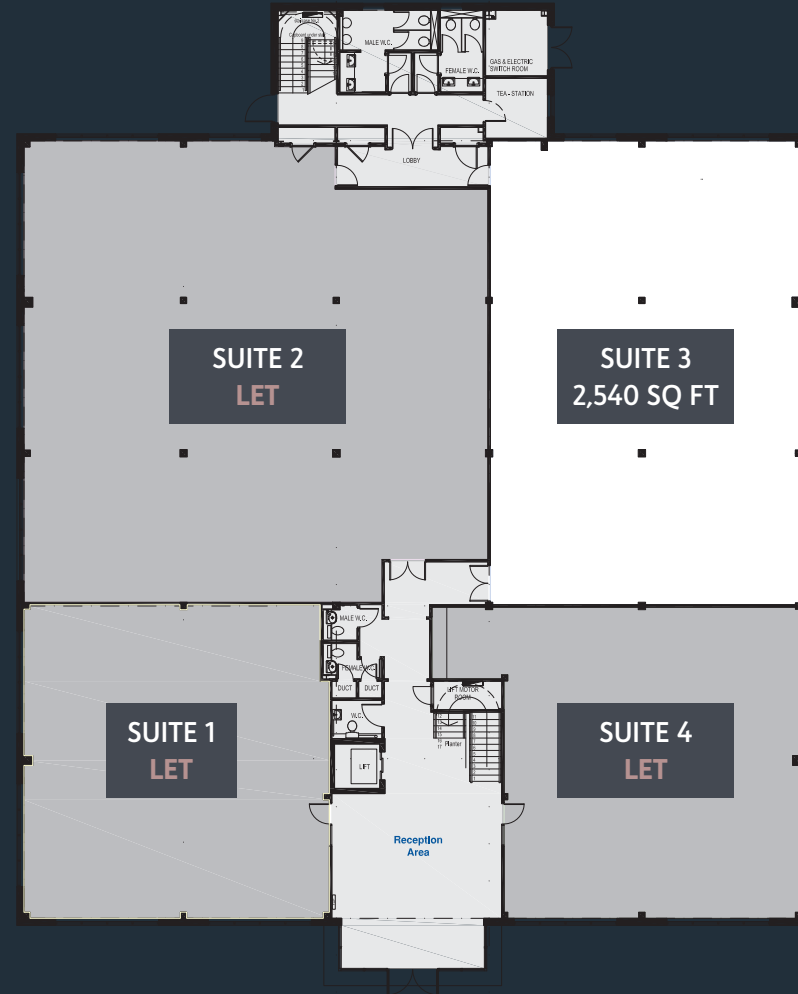
2,540 SQ FT

- Fully refurbished
- Optional A/C
- Significant on-site car parking
- External branding opportunity
- Immediate motorway access to both M56 and M60

To discuss how your own requirements can be accommodated at Enterprise Point please contact a member of the leasing team.

**Orbit**  
Developments

**01625 588200**  
[www.orbit-developments.co.uk](http://www.orbit-developments.co.uk)



**Richard Wharton**  
[Richard.Wharton@eu.jll.com](mailto:Richard.Wharton@eu.jll.com)

**James Dickinson**  
[james@canningoneill.com](mailto:james@canningoneill.com)

All figures quoted are subject to change and are exclusive of VAT where applicable and subject to contract. Service charges are budget figures. Please confirm with Orbit Developments for details of what is included. Business rates should be confirmed with the relevant local authority and are only provided as an accurate estimate and therefore may vary from those figures quoted. Please contact Orbit Developments for further details on any figures quoted and for specific terms including available incentive packages.

# ENTERPRISE POINT

SHARSTON, SOUTH MANCHESTER M22 9AF

High Quality  
First Floor  
Workspace

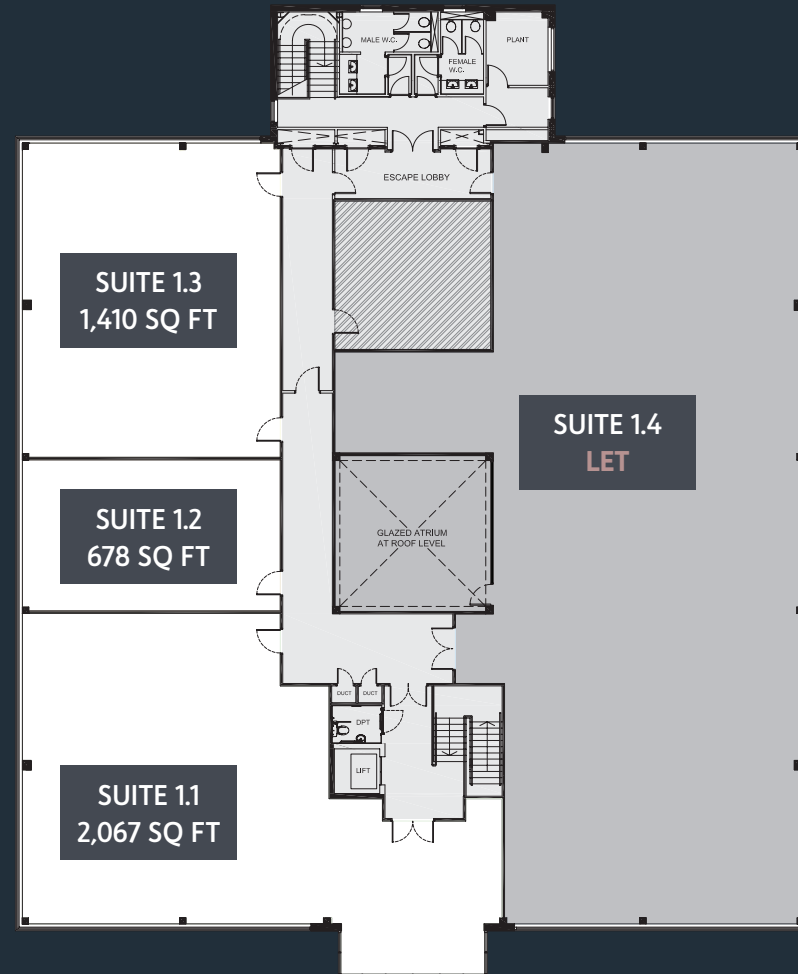
678 - 2,067 SQ FT

- Fully refurbished
- Optional A/C
- Significant on-site car parking
- External branding opportunity
- Immediate motorway access to both M56 and M60

To discuss how your own requirements can be accommodated at Enterprise Point please contact a member of the leasing team.

**Orbit**  
Developments

**01625 588200**  
[www.orbit-developments.co.uk](http://www.orbit-developments.co.uk)



**Richard Wharton**  
[Richard.Wharton@eu.jll.com](mailto:Richard.Wharton@eu.jll.com)

**James Dickinson**  
[james@canningoneill.com](mailto:james@canningoneill.com)

All figures quoted are subject to change and are exclusive of VAT where applicable and subject to contract. Service charges are budget figures. Please confirm with Orbit Developments for details of what is included. Business rates should be confirmed with the relevant local authority and are only provided as an accurate estimate and therefore may vary from those figures quoted. Please contact Orbit Developments for further details on any figures quoted and for specific terms including available incentive packages.