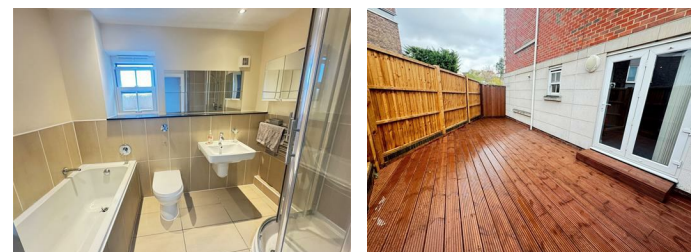
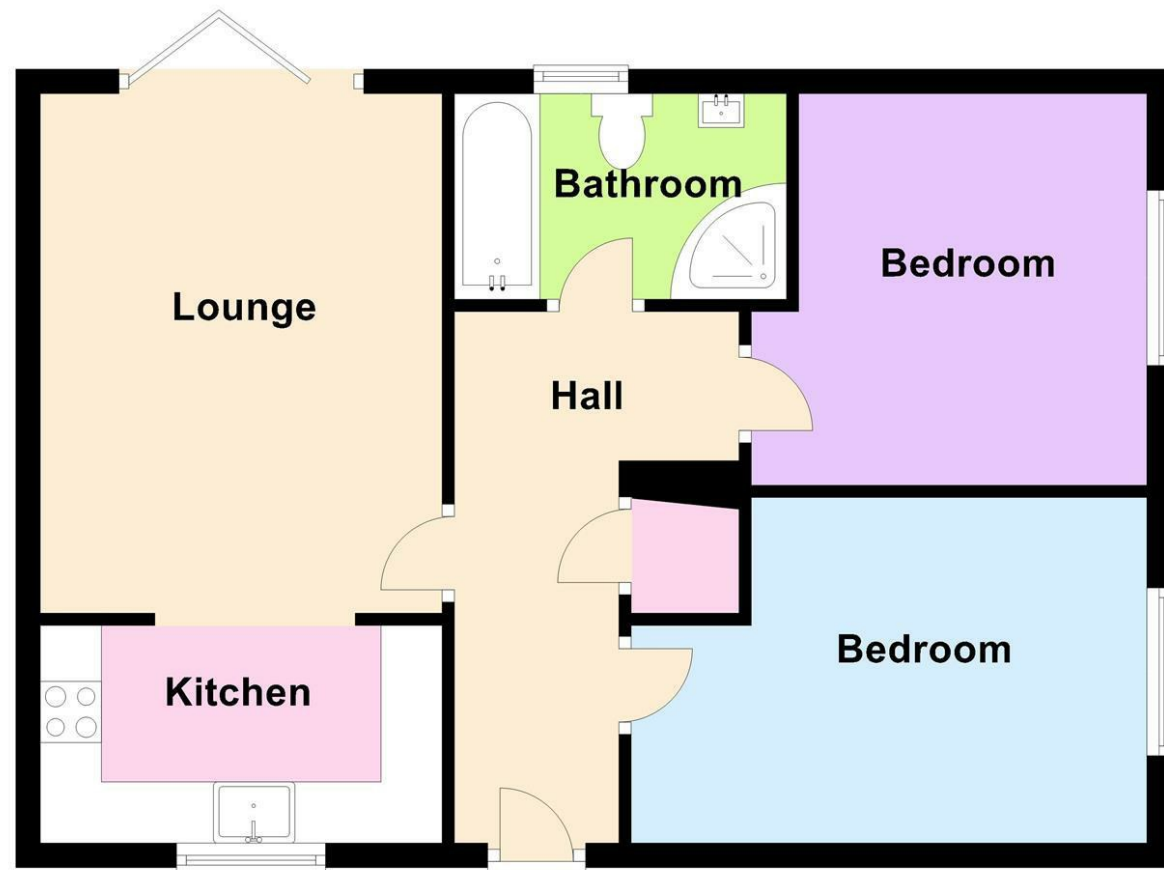


## Ground Floor



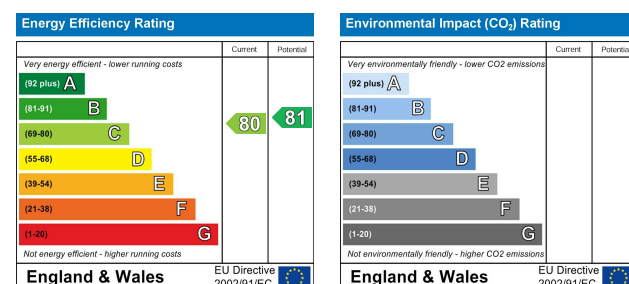
### Flat 2 The Trinity Crown Hill Rayleigh, SS6 7HQ £270,000

- Stones Throw to Rayleigh High Street
- Ground floor With Own Private Garden
- 2 Bedrooms
- Spacious Reception Hall With Entryphone System
- Luxury Bathroom
- Lounge With Bi-Folding Doors
- Contemporary Kitchen
- Private Allocated Parking
- Communal Garden
- Early Viewing Recommended



12-14 Berrys Arcade  
High Street  
Rayleigh  
SS6 7EF

Tel: 01268 770728  
info@stgeorgehomes.co.uk  
www.stgeorgehomes.co.uk







\*\*\*\* GROUND FLOOR APARTMENT WITHIN A MINUTES WALK TO RAYLEIGH STATION \*\*\*\*  
GUIDE Price £270,000 to £280,000

Purpose built 2 bedroom ground floor apartment with own garden and private parking, communal gardens. The property offers well planned accommodation including a quality bathroom, contemporary fitted kitchen, lounge, 2 bedrooms, underfloor heating, UPVC double glazing, gated & allocated parking, Entryphone system, This imposing development is located directly opposite the station and also a short walk to Rayleigh High Street

#### ACCOMMODATION

Approached to the left have side though the gate to undercover pathway

#### RECEPTION HALL

L shaped, Entryphone system, underfloor heating, power points spot lighting, storage/airing cupboard,

#### LOUNGE 13' x 10'8 (3.96m x 3.25m)

UPVC double glazed Bi-folding doors to the private decked garden, under floor heating, spot lighting, provision for wall mounted Tv, power points, open way to:

#### KITCHEN 10' x 6' (3.05m x 1.83m)

UPVC double glazed window, fitted with a contemporary style kitchen with cabinets to both eye & base level, granite work tops, inset sink drainer with mixer taps, ceramic hob, extractor fan, oven, integrated dishwasher, plumbing for washing machine, tiled floor, spot lighting, integrated fridge freezer,

#### BEDROOM 1 13' x 9'4 (3.96m x 2.84m)

UPVC double glazed window, underfloor heating, power points, spot lighting,

#### BEDROOM 2 9'5 x 8'3 plus door recess (2.87m x 2.51m plus door recess )

UPVC double glazed, under floor heating, spot lighting, power points,

#### BATHROOM

A quality Villeroy & Boch white suite comprising panelled bath with wall mounted filler tap, separate shower cubicle with glazed screen, low level wc, wall mounted wash hand basin, tiled floor with under floor heating & heated towel rail, spot lighting, extractor fan,

#### OUTSIDE

#### OWN GARDEN

Accessed from the lounge is a decked garden with fencing providing added seclusion & sole use for flat 2 !

#### COMMUNAL GARDENS

There are communal garden to the front & rear of the complex with established shrub beds,

#### PARKING

The parking is to the rear of the complex approached via Philpot House through electric gates providing access to an allocated parking space