



## Mary Street, Blaydon, Tyne And Wear, NE21 4QA

**\*\*\*AVAILABLE MID MAY 2025\*\*\*** A well presented two bedroom stone terrace in Blaydon, within easy access of local shops and transport links. The property comprises of entrance porch, lounge and kitchen/diner to the ground floor. To the first floor there are two bedrooms and a lovely bathroom W/C. Externally there is a private yard to the rear with parking available on street. Demand is likely to be high for this lovely house so please register your interest early to avoid disappointment. EPC Rating E.



**\*\*\*AVAILABLE MID MAY\*\*\***

**Two Bedroom Terrace**

**Enclosed Rear Yard**

**Beautifully Presented**

**Holding Deposit £159**

**EPC Rating E**

**Monthly Rental Of £725**

**Lounge** 15' 2" x 13' 0" (4.62m x 3.96m) max  
Under stairs storage cupboard.

**Kitchen/Diner** 16' 3" x 8' 4" (4.95m x 2.53m)  
Fitted with a modern range of wall and base units, integrated oven/hob, space for freestanding appliances. Breakfast bar.

**Bedroom 1** 13' 3" x 11' 10" (4.03m x 3.61m) max  
Large storage cupboard.

**Bedroom 2** 11' 10" x 10' 3" (3.60m x 3.12m) max

**Bathroom** 7' 10" x 5' 9" (2.38m x 1.74m)  
Bath, wash basin, W/C.

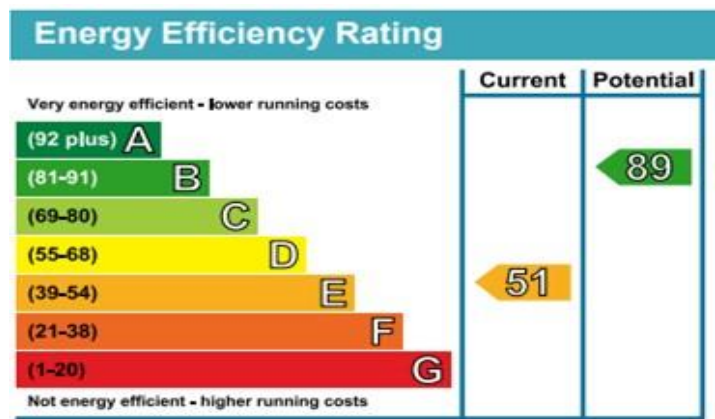
**Externally**  
Private yard to the rear. Parking available on street.

**Holding deposit**  
Equivalent to 1 weeks rent (the exact amount can be found at the top of these details). This holding deposit secures the property for you while we conduct your reference checks and goes towards your first months rent prior to move in. It is not an additional fee.

**Additional Information**  
Council Tax Band A. Security deposit/bond equivalent to 1 months rent plus 1 months rent payable up front. Minimum tenancy term 6 months.

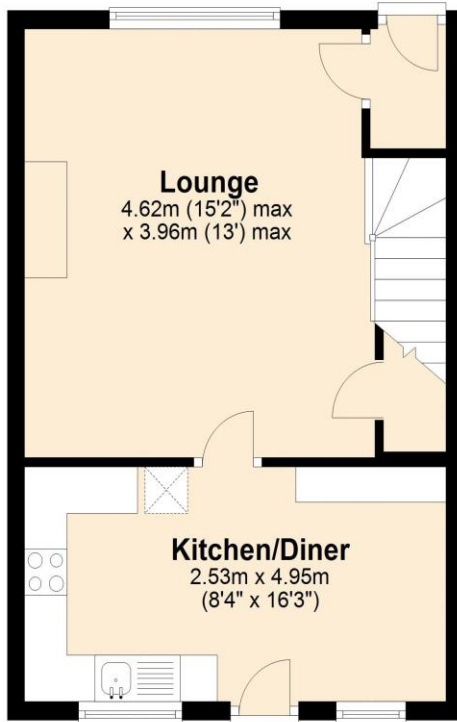


**EPC Graph (full EPC available on request)**

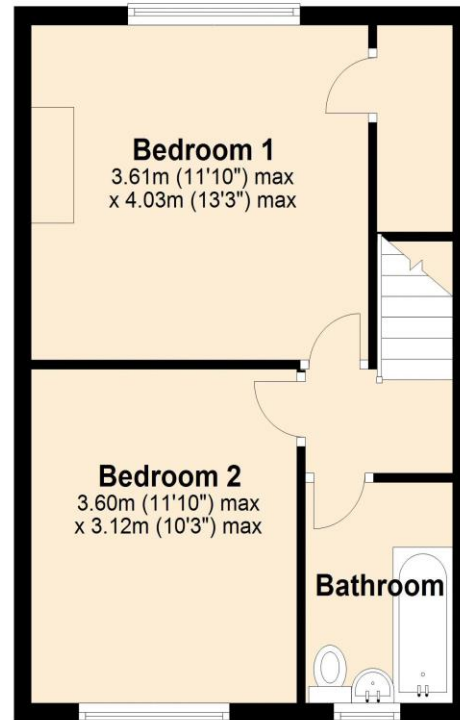


## Floorplan

**Ground Floor**



**First Floor**



For more information please call **0191 414 1200** or email [info@livinglocalhomes.co.uk](mailto:info@livinglocalhomes.co.uk)

**WE WIN AWARDS** year-after-year and are currently ranked in the top 5% for lettings in the country!

*Lorraine* Valuer & Negotiator

*Emma* Owner & Managing Director

*Laura*  
Sales & Lettings Negotiator

*Brooke*  
Lettings  
Co-ordinator

*Louise*  
Sales & Lettings Negotiator



facebook

PRS  
Property  
Redress  
Scheme

rightmove

onTheMarket.com

Zoopla.co.uk

PrimeLocation.com

firstmortgage.co.uk®

