



Eastlands, Winlaton, Tyne And Wear, NE21 5DS

*****AVAILABLE NOW***** This two bedroom semi-detached house would make an ideal home for a wide range of tenants! The property comprises of entrance hall, lounge/diner, kitchen and two outhouse storage rooms to the ground floor. To the first floor are two double bedrooms and a shower room W/C. Externally there are front and rear gardens, with parking available on street. Viewing highly recommended. Available on an unfurnished basis. EPC rating E.



*****AVAILABLE NOW*****

Semi-Detached House

Two Double Bedrooms

Holding Deposit £162

Gardens

EPC Rating E

£700 per month

Lounge/Diner 19' 7" x 9' 7" (5.98m x 2.92m)
Dual aspect windows, built in cupboard.

Kitchen 8' 3" x 7' 8" (2.52m x 2.33m)
Fitted with a range of wall and base units, built in cupboard.

Storage Room 7' 8" x 6' 9" (2.33m x 2.06m)

Bedroom 1 14' 3" x 8' 11" (4.35m x 2.73m) max
Built in cupboard.

Bedroom 2 11' 0" x 10' 8" (3.35m x 3.24m) max
Built in wardrobes.

Shower Room 6' 7" x 5' 6" (2.01m x 1.68m)
Bath with overhead shower, wash basin, W/C.

Externally
Lawned garden to front. Enclosed rear garden. Parking available on street.

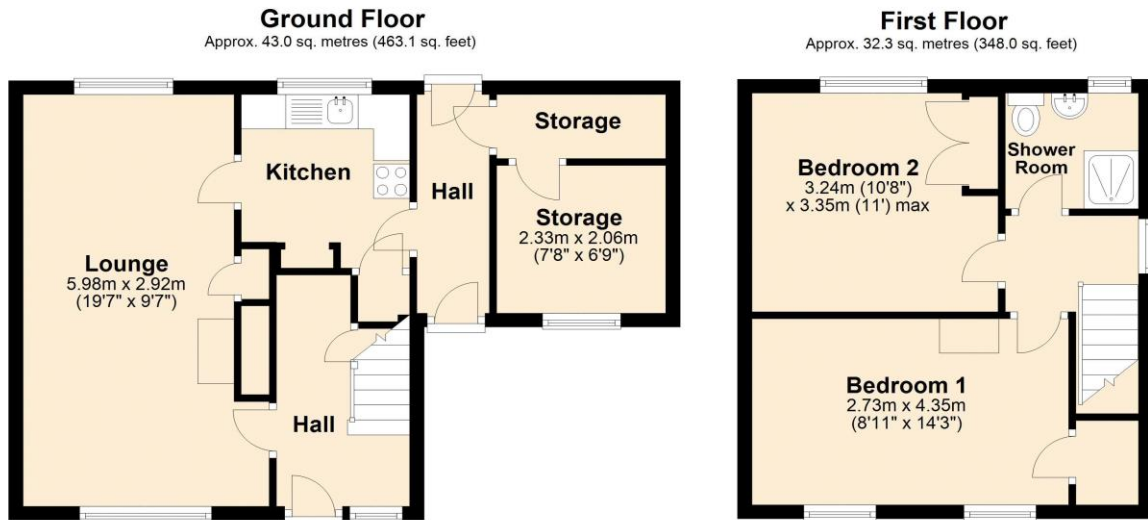
Additional information
Council tax band A. EPC Rating E. Minimum tenancy length 6 months. Holding deposit £162. Security deposit equivalent to 1 months rent. Mobile phone coverage and broadband availability: <https://checker.ofcom.org.uk/>

Holding Deposit
This holding deposit secures the property for you while we conduct your reference checks and goes towards your first months rent prior to move in. It is not an additional fee.

EPC Graph (full EPC available on request)



Floorplan



Total area: approx. 75.4 sq. metres (811.1 sq. feet)

For more information please call **0191 414 1200** or email info@livinglocalhomes.co.uk

WE WIN AWARDS year-after-year and are currently ranked in the top 5% for lettings in the country!

Lorraine Valuer & Negotiator

Emma Owner & Managing Director

Laura
Sales & Lettings Negotiator

Brooke
Lettings
Co-ordinator

Louise
Sales & Lettings Negotiator



facebook

PRS
Property
Redress
Scheme

rightmove

OnTheMarket.com

Zoopla.co.uk

PrimeLocation.com

firstmortgage.co.uk®

