



Theresa Street, Blaydon, Tyne And Wear, NE21 4QE

*****AVAILABLE MID JUNE***** Well presented, spacious three bedroom stone terraced house close to local shops, amenities and transport links. The property comprises of entrance hallway, lounge, modern style kitchen and utility room to the ground floor. To the first floor are three bedrooms and a bathroom W/C. Externally the property benefits from a courtyard garden to the front and yard to the rear. Parking available on street. Available from middle of June on an unfurnished basis. EPC rating E.



*****AVAILABLE MID JUNE*****

Close to Shops & Amenities

Stone Terrace

Holding Deposit £172

Three Bedrooms

EPC Rating E

£750 per month

Lounge 13' 6" x 11' 0" (4.11m x 3.36m) max

Kitchen 11' 5" x 10' 11" (3.49m x 3.34m)

Fitted with a modern style range of wall and base units, integrated oven/hob, integrated fridge freezer. Table and 4 chairs.

Utility 10' 1" x 6' 7" (3.08m x 2.01m)

Washing machine and sink.

Bedroom 1 11' 6" x 10' 7" (3.51m x 3.23m) max

Bedroom 2 11' 5" x 11' 1" (3.47m x 3.38m) max

Bedroom 3 7' 7" x 5' 4" (2.31m x 1.63m)

Bathroom 9' 7" x 5' 10" (2.93m x 1.79m)

Bath with shower over, wash basin, W/C, built in storage cupboard.

Externally

Courtyard lawned garden to front. Yard to rear with decking. Parking available on street.

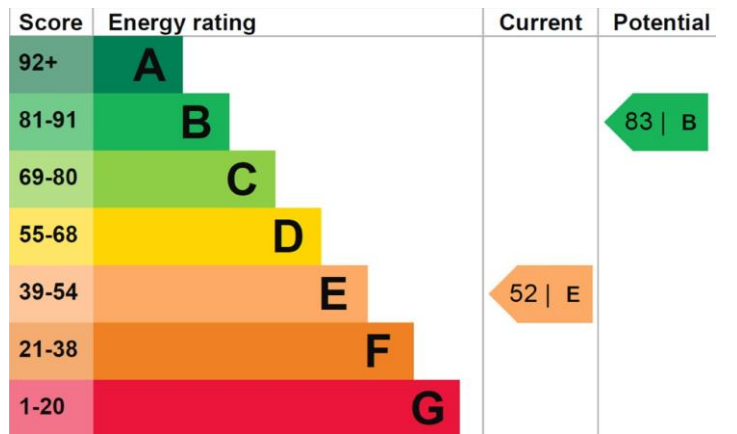
Holding Deposit

This holding deposit secures the property for you while we conduct your reference checks and goes towards your first months rent prior to move in. It is not an additional fee.

Additional Information

This property is a council tax band A. EPC rating E. Security deposit/bond equivalent to 1 months rent (£750) plus 1 months rent payable up front. Minimum tenancy term 6 months. Mobile phone coverage and broadband availability: <https://checker.ofcom.org.uk/>

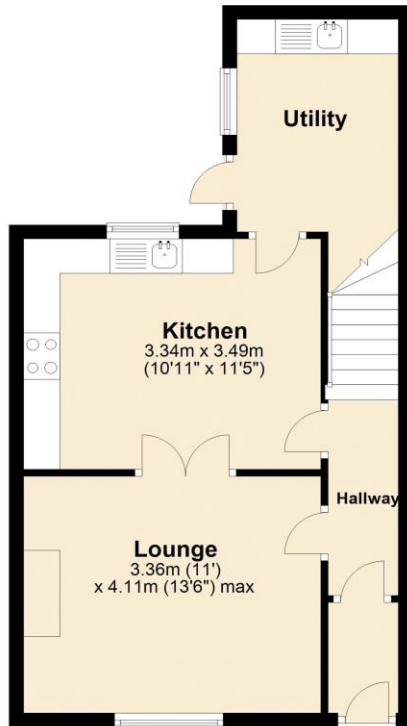
EPC Graph (full EPC available on request)



Floorplan

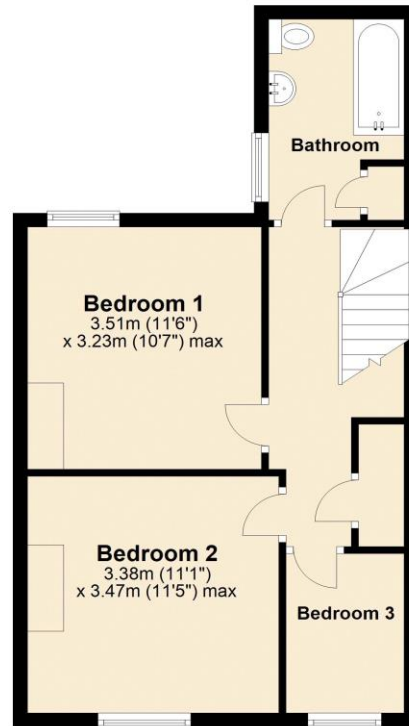
Ground Floor

Approx. 39.2 sq. metres (421.5 sq. feet)



First Floor

Approx. 41.7 sq. metres (448.8 sq. feet)



Total area: approx. 80.9 sq. metres (870.3 sq. feet)

For more information please call **0191 414 1200** or email **info@livinglocalhomes.co.uk**

WE WIN AWARDS year-after-year and are currently ranked in the top 5% for lettings in the country!

Lorraine Valuer & Negotiator

Emma Owner & Managing Director

Laura
Sales & Lettings Negotiator

Brooke
Lettings
Co-ordinator

Louise
Sales & Lettings Negotiator



facebook

PRS
Property
Redress
Scheme

rightmove

onTheMarket.com

Zoopla.co.uk

PrimeLocation.com

firstmortgage.co.uk®

