



Pickering Drive, Blaydon, Tyne And Wear, NE21 5GB

*****CHAIN FREE***** This three bedroom end terrace house is beautifully presented and a credit to the current owners! The property comprises of entrance hall, lounge, kitchen/dining room and W/C to the ground floor. To the first floor are three bedrooms and a bathroom W/C. The real hidden gem is the beautiful rear garden which has a lovely array of mature plants and shrubs. Driveway parking available to front. Early viewing essential to avoid disappointment! Awaiting EPC rating.

*****CHAIN FREE*****

End Terrace House

Three Bedrooms

Beautifully Presented

Driveway & Garden

Awaiting EPC Rating

£165,000

Lounge 14' 9" x 11' 4" (4.49m x 3.45m)

French doors to rear garden. Under stairs storage cupboard.

Kitchen/Diner 13' 7" x 11' 7" (4.13m x 3.54m) max

Fitted with a range of wall and base units. Integrated oven/hob, fridge/freezer, washing machine and dishwasher. Space for dining table.

Ground floor W/C 5' 0" x 3' 0" (1.53m x 0.92m)

Wash basin, W/C.

Bedroom 1 14' 8" x 9' 7" (4.48m x 2.91m) max

Built in cupboard.

Bedroom 2 9' 9" x 7' 11" (2.96m x 2.42m)

Bedroom 3 6' 6" x 6' 5" (1.99m x 1.96m)

Bathroom 8' 6" x 5' 5" (2.58m x 1.66m)

Bath with shower over, wash basin, W/C.

Externally

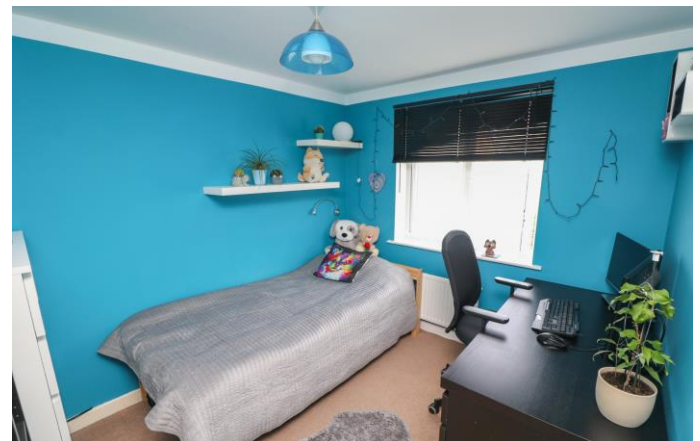
Lovely enclosed garden to rear with side access. Patio seating area, lawn, storage shed and a selection of beautiful mature plants and shrubs. Off street parking space to front. Further parking available on street.

Additional information

Council tax band B. This property is freehold. There is an alarm system fitted which will be included in the sale. We understand that some items of furniture can be included in the sale. This can be discussed upon a buyer making an offer with Living Local.

Important note to purchasers

We have prepared these sales particulars as a general guide to give a broad description of the property. They are not intended to constitute part of an offer or contract. The measurements are a guide to prospective buyers only and are not precise. We have not carried out a structural survey and the services, appliances and fittings have not been tested by us. If you require any further information, please contact us.



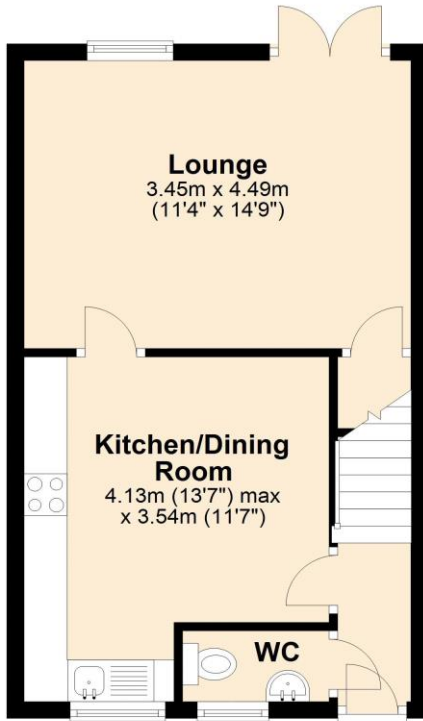


EPC Graph (full EPC available on request)

Floorplan

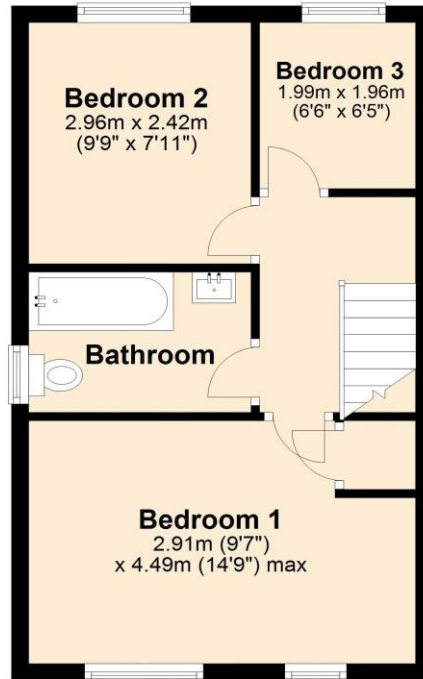
Ground Floor

Approx. 34.5 sq. metres (371.2 sq. feet)



First Floor

Approx. 34.5 sq. metres (371.2 sq. feet)



Total area: approx. 69.0 sq. metres (742.4 sq. feet)

For more information please call **0191 414 1200** or email info@livinglocalhomes.co.uk

WE WIN AWARDS year-after-year and are currently ranked in the top 5% for lettings in the country!

Lorraine Valuer & Negotiator

Emma Owner & Managing Director

Laura
Sales & Lettings Negotiator

Brooke
Lettings
Co-ordinator

Louise
Sales & Lettings Negotiator



facebook

PRS
Property
Residence
Scheme

rightmove

OnTheMarket.com

Zoopla.co.uk

PrimeLocation.com

firstmortgage.co.uk®

