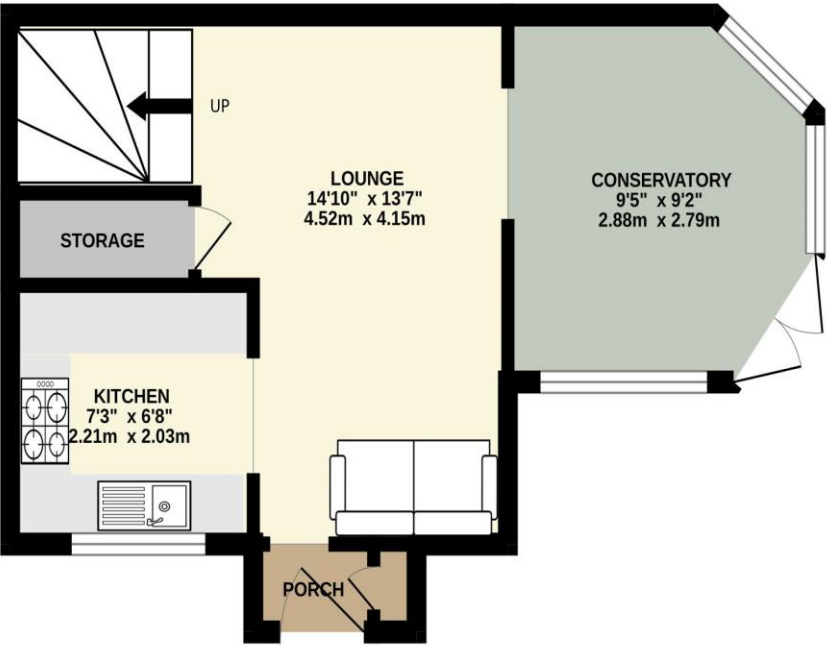
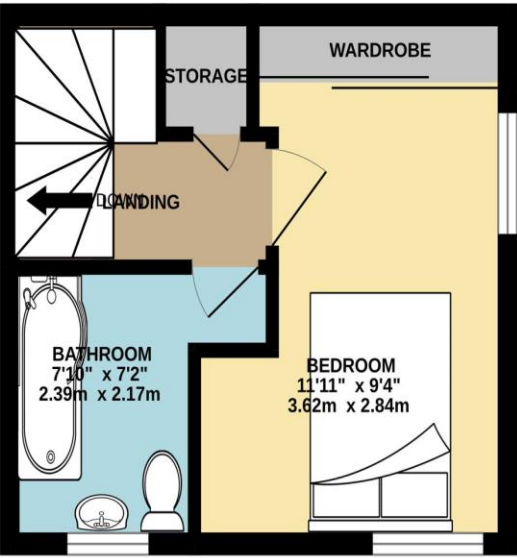




GROUND FLOOR
292 sq.ft. (27.1 sq.m.) approx.



1ST FLOOR
202 sq.ft. (18.8 sq.m.) approx.



TOTAL FLOOR AREA : 494 sq.ft. (45.9 sq.m.) approx.

Whilst every attempt has been made to ensure the accuracy of the floorplan contained here, measurements of doors, windows, rooms and any other items are approximate and no responsibility is taken for any error, omission or mis-statement. This plan is for illustrative purposes only and should be used as such by any prospective purchaser. The services, systems and appliances shown have not been tested and no guarantee as to their operability or efficiency can be given.
Made with Metropix ©2025

9 Ripon Gardens

Tempest, Waterlooville PO7 8ND

Price: £220,000

DESCRIPTION

If you're searching for a freehold property with it's own private garden, this charming one bedroom house tucked away in a quiet cul-de-sac could be the perfect find. The home offers more space than your typical one bedroom property. Step inside and you'll find an entrance porch leading into a bright lounge, open to the kitchen and a real bonus is the conservatory, creating additional living space to enjoy all year round. Upstairs, you will find a light filled bedroom with fitted wardrobes and a separate bathroom. Outside, the generous private garden is a standout feature, accessed directly from the conservatory and complete with side access. Additional benefits include double glazing, gas central heating, an air-conditioning unit in the lounge and an allocated parking space. On leaving the property you can take the short stroll to the local shops, pub and bus routes.

ACCOMMODATION

PORCH

LOUNGE: 13' 8" x 7' 7" (4.16m x 2.31m)

KITCHEN: 7' 3" x 6' 8" (2.21m x 2.03m)

CONSERVATORY: 9' 5" x 8' 7" (2.87m x 2.61m)

FIRST FLOOR

BEDROOM: 11' 8" to front of wardrobe x 9' 1" (3.55m x 2.77m)



BATHROOM: 7' 4" x 5' 5" (2.23m x 1.65m)

OUTSIDE

PRIVATE GARDEN

ALLOCATED PARKING SPACE

