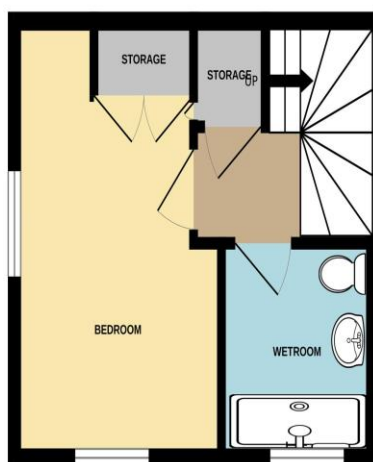
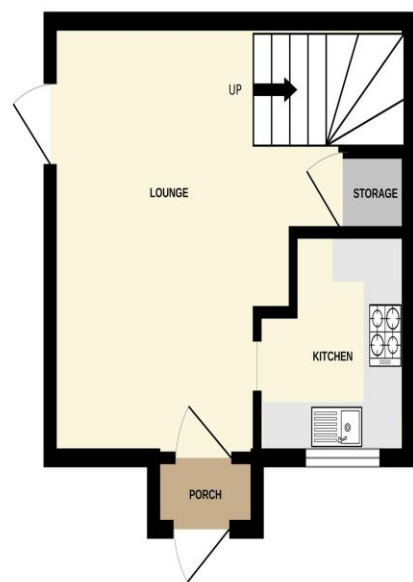




GROUND FLOOR

1ST FLOOR



Whilst every attempt has been made to ensure the accuracy of the floorplan contained here, measurements of doors, windows, rooms and any other items are approximate and no responsibility is taken for any error, omission or mis-statement. This plan is for illustrative purposes only and should be used as such by any prospective purchaser. The services, systems and appliances shown have not been tested and no guarantee as to their operability or efficiency can be given.
Made with Metroplan 62025

Wainwright Estates

10 The Precinct, London Road
Waterlooville, Hampshire PO7 7DT

Tel: 02392 264500

Email: sales@wainwrightestates.co.uk
www.wainwrightestates.co.uk

28 Aintree Drive
Tempest, Waterlooville PO7 8NG

Offers Over: £205,000

DESCRIPTION

Tucked away from the road you will stumble across this one bedroom house on the ever popular Tempest Estate in Waterlooville. Internally the property has been recently redecorated and has a light and airy feel. Downstairs you will find a fitted kitchen and living space with doors opening into your private and secluded rear garden. Upstairs you will find a generous sized bedroom with a fitted wardrobe and a wet room. The property also benefits from an allocated parking space and is offered with no forward chain.

ACCOMMODATION

ENTRANCE PORCH

LOUNGE 13' 7" x 9' 3" (4.14m x 2.82m)

KITCHEN 6' 9" x 7' 3" (2.06m x 2.21m)

FIRST FLOOR LANDING

BEDROOM 14' 1" x 8' 0" (4.29m x 2.44m)

WETROOM 5' 7" x 7' 7" (1.70m x 2.31m)

OUTSIDE



SIDE GARDEN

ALLOCATED PARKING SPACE

