

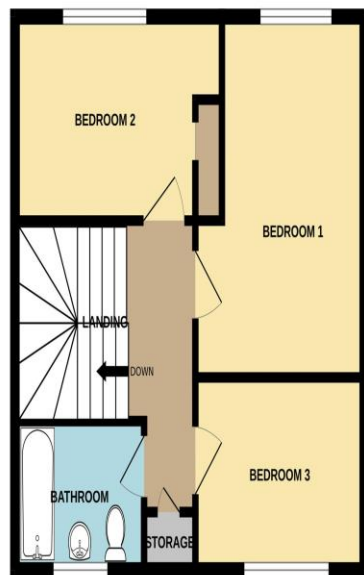
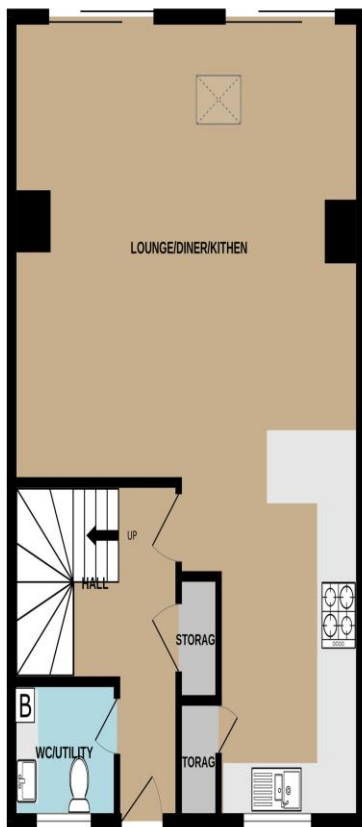


WAINWRIGHT
ESTATES



GROUND FLOOR
625 sq.ft. (58.1 sq.m.) approx.

1ST FLOOR
436 sq.ft. (40.5 sq.m.) approx.



TOTAL FLOOR AREA: 1061 sq.ft. (98.6 sq.m.) approx.

Whilst every attempt has been made to ensure the accuracy of the floorplan contained here, measurements of doors, windows, rooms and any other items are approximate and no responsibility is taken for any error, omission or mis-statement. This plan is for illustrative purposes only and should be used as such by any prospective purchaser. The services, systems and appliances shown have not been tested and no guarantee is to their operability or efficiency can be given.

Made with Metropix ©2025

Wainwright Estates

10 The Precinct, London Road
Waterlooville, Hampshire PO7 7DT

Tel: 02392 264500

Email: sales@wainwrightestates.co.uk
www.wainwrightestates.co.uk

13 Bliss Close
Waterlooville PO7 5XD

Offers Over £300,000

DESCRIPTION

INTERNAL PHOTOS COMING SOON!! This spacious extended Three bedroom end of terraced property is located in Waterlooville and within close proximity to the local schools. Internally the property has a light and airy feel and has been freshly redecorated. Downstairs the accommodation comprises of a modern fitted kitchen opening out into a generous sized lounge/diner overlooking your low maintenance rear garden. There is also a handy downstairs cloakroom/utility room. Upstairs you will find three well proportioned bedrooms for the growing family and a modern bathroom suite. Additional benefits come in the form of double glazing, gas central heating and the property is being offered with no forward chain.

ACCOMMODATION

ENTRANCE HALL

WC/UTILITY 6' 5" x 5' 3" (1.95m x 1.60m)

KITCHEN AREA 8' 3" x 12' 7" (2.51m x 3.83m)
Open plan to:-

LOUNGE/DINER 21' 4" x 17' 0" (6.50m x 5.18m)

FIRST FLOOR LANDING

BEDROOM 1 13' 4" x 8' 0" (4.06m x 2.44m)

BEDROOM 2 12' 4" x 8' 4" (3.76m x 2.54m)



BEDROOM 3 10' 4" x 7' 2" (3.15m x 2.18m)

BATHROOM 6' 4" x 5' 4" (1.93m x 1.62m)

OUTSIDE

REAR GARDEN

