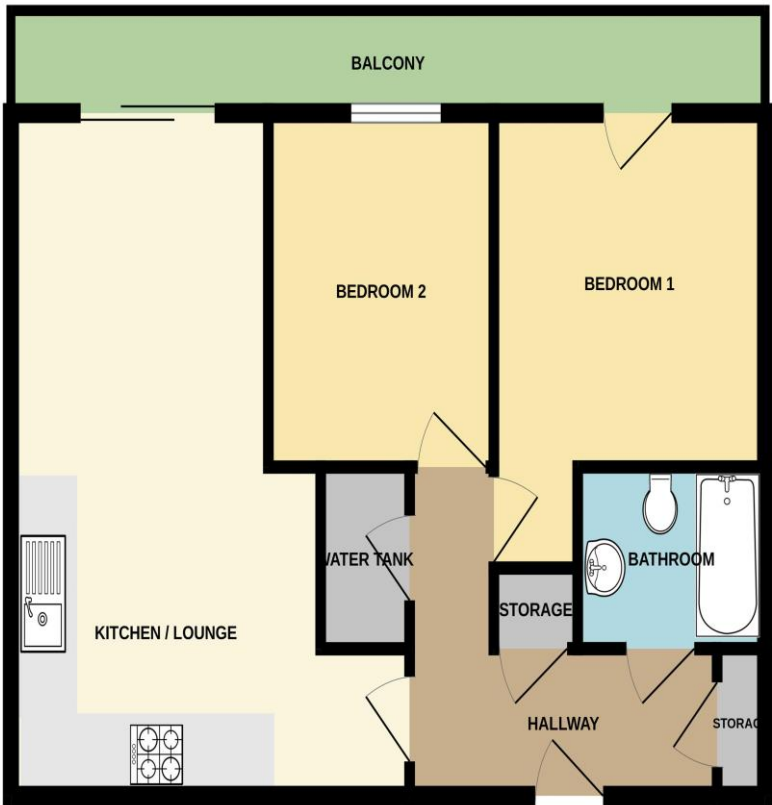




TOP FLOOR FLAT



Whilst every attempt has been made to ensure the accuracy of the floorplan contained here, measurements of doors, windows, rooms and any other items are approximate and no responsibility is taken for any error, omission or mis-statement. This plan is for illustrative purposes only and should be used as such by any prospective purchaser. The services, systems and appliances shown have not been tested and no guarantee as to their operability or efficiency can be given.
Made with Metropix 2020

Wainwright Estates
10 The Precinct, London Road
Waterlooville, Hampshire PO7 7DT

Tel: 02392 264500
Email: sales@wainwrightestates.co.uk
www.wainwrightestates.co.uk

28 willow park Leigh Road

Havant PO9 2GG

Price: £220,000

DESCRIPTION

Immaculate, two bedroom top floor flat situated in Leigh Road, Havant. The property benefits from a security entry system, lift to all floors and a 'premium' allocated parking space. Internally there is a light and airy feel throughout, an open plan kitchen/lounge with full length balcony, modern bathroom, a generous sized master bedroom and an additional second bedroom. On leaving the property you are just a short walk to Havant town Centre with its amenities and mainline train station to London. Internal viewing highly recommended.

ACCOMMODATION

KITCHEN / LIVING AREA: 20' 1" x 9' 6" (6.12m x 2.89m)

BEDROOM 1: 10' 0" x 10' 2" (3.05m x 3.10m)

BEDROOM 2: 8' 3" x 10' 2" (2.51m x 3.10m)

BATHROOM: 6' 0" x 5' 2" (1.83m x 1.57m)

BALCONY

ALLOCATED PARKING SPACE

