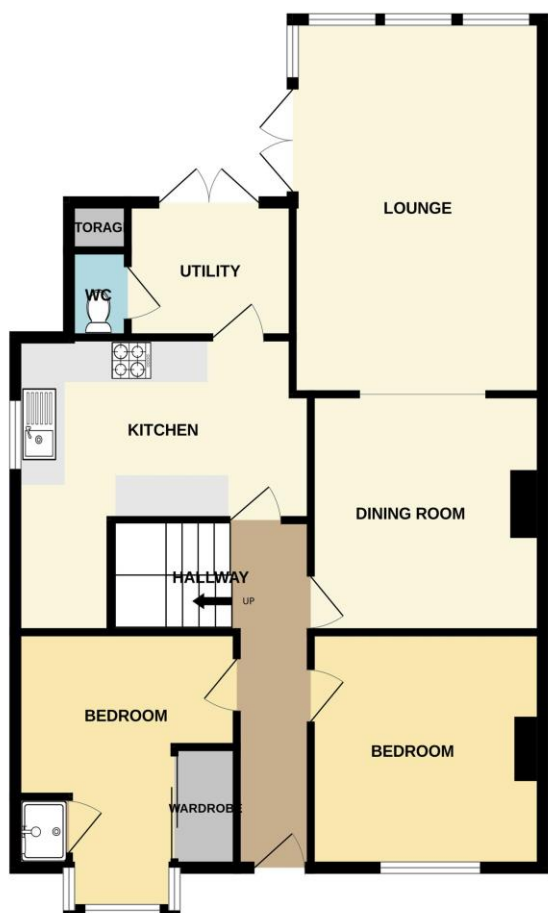




GROUND FLOOR



1ST FLOOR



Whilst every attempt has been made to ensure the accuracy of the floorplan contained here, measurements of doors, windows, rooms and any other items are approximate and no responsibility is taken for any error, omission or mis-statement. This plan is for illustrative purposes only and should be used as such by any prospective purchaser. The services, systems and appliances shown have not been tested and no guarantee as to their operability or efficiency can be given.
Made with Metropix ©2023

22 Rowlands Avenue

Waterlooville PO7 7RU

Price: £435,000

DESCRIPTION

This deceptively spacious FOUR DOUBLE Bedroom semi detached chalet bungalow is located on the outskirts of Waterlooville in Portsmouth. Internally the property offers extremely flexible accommodation which currently comprises of an expansive lounge/diner with views over your generous sized rear garden. You will also find a modern fitted kitchen with separate utility room with a handy downstairs cloakroom. There are also two well proportioned bedrooms . Upstairs you will find two generous sized double bedrooms and a grand four piece bathroom. Outside the property boasts a garage which has been used as a games room and a private and enclosed rear garden. Additional benefits come in the form of off road parking to the front of the property and the home is also offered with no forward chain.

ACCOMMODATION

LOUNGE: 18' 1" x 12' 5" (5.51m x 3.78m)

DINING ROOM: 11' 6" x 11' 4" (3.50m x 3.45m)

KITCHEN: 14' 9" x 8' 9" (4.49m x 2.66m)

UTILITY: 8' 1" x 8' 0" (2.46m x 2.44m)

WC 2' 5" x 4' 8" (0.74m x 1.42m)

BEDROOM: 11' 6" x 9' 1" (3.50m x 2.77m)

BEDROOM: 14' 5" x 11' 7" (4.39m x 3.53m)

HALLWAY 14' 5" x 3' 6" (4.39m x 1.07m)



FIRST FLOOR

BEDROOM 1: 19' 3" x 10' 7" (5.86m x 3.22m)

BEDROOM 2: 16' 8" x 12' 1" (5.08m x 3.68m)

BATHROOM: 15' 4" x 6' 0" (4.67m x 1.83m)

OUTSIDE

GARAGE 23' 9" x 12' 3" (7.23m x 3.73m)

DRIVEWAY

REAR GARDEN

