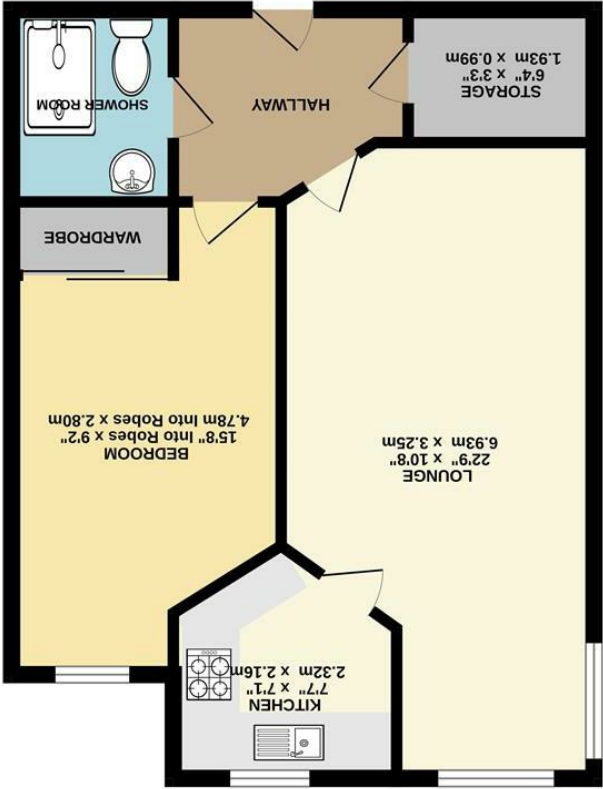


These particulars are believed to be accurate but they are not guaranteed and do not form a contract. Neither Jordan Fishwick nor the vendor or lessor accept any responsibility in respect of these particulars, which are not intended to be statements or representations of fact and any intending purchaser or lessee must satisfy himself by inspection or otherwise as to the correctness of each of the statements contained in these particulars. Any floorplans on this brochure are for illustrative purposes only and are not necessarily to scale.

When every attempt has been made to ensure the accuracy of the floorplan contained here, measurements of doors, windows, corners and any other items are approximate and no responsibility is taken for any error, omission or mis-statement. This plan is for illustrative purposes only and should be used as such by any prospective purchaser. The service, systems and appliances shown have been noted and no guarantee, as to their operability or efficiency can be given. Made with Winlogix (2020)



GROUND FLOOR





Woodgrove Court Peter Street,
Hazel Grove, Stockport, SK7 4GH

£140,000



The Property

Jordan Fishwick are pleased to bring to the market this well-presented one-bedroom, second-floor retirement apartment, located within the popular Woodgrove Court development. Ideally situated within close proximity to Hazel Grove Town Centre, the property benefits from easy access to a wide range of local amenities and transport links. The accommodation briefly comprises a spacious living and dining area with pleasant views over the beautifully maintained communal grounds, a well-equipped fitted kitchen, a generous master bedroom, a modern shower room, and a separate storage cupboard. No Onward Chain. Suitable only for Age 60 and over.



- One Bedroom Retirement Apartment
- Situated on the Second Floor
- No Onward Chain
- Close to all Local Amenities
- Well Presented Throughout
- Council Tax Band B

Postcode - SK7 4GH
EPC Rating - C
Local Authority - Stockport Council
Council Tax - B

