



*jordan fishwick*

Cromley Road High Lane Stockport





## Cromley Road High Lane Stockport SK6 8BU

£450,000



### The Property

Occupying an enviable position within a sought after, established residential area in High Lane, an extended three bedroom detached bungalow. Brick paved driveway, attached garage and enclosed, private beautiful gardens with Summerhouse. Spacious, well presented accommodation with pvc double glazing, gas central heating and comprising: storm porch, porch, hallway, 23ft living room, conservatory, fitted kitchen, two double bedrooms with fitted wardrobes, re-fitted contemporary bathroom with separate shower, bedroom three/study and second wc. Useful loft space. No Chain and Viewing highly recommended.





- Extended Detached Bungalow
- Sought After Location
- Three Bedrooms
- Enclosed Gardens With Summerhouse
- 23ft Living Room
- Re-fitted Bathroom
- Attached Garage and Driveway Parking
- Well Presented
- No Chain

Postcode

SK6 8BU

EPC Rating


D

Local Authority

Stockport

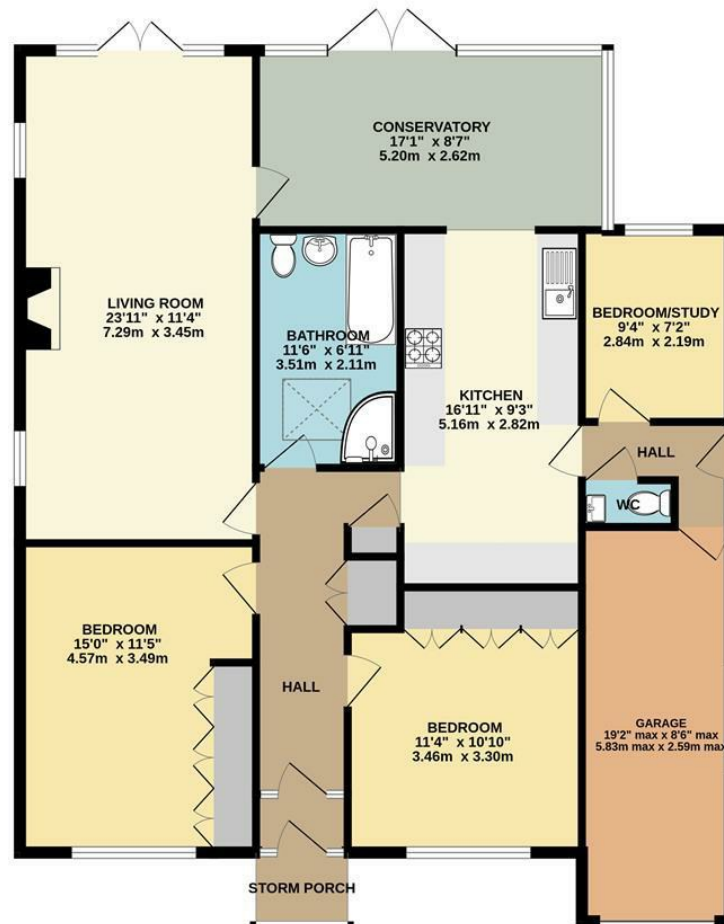
Council Tax

E

Energy Efficiency Rating		
	Current	Potential
Very energy efficient - lower running costs		
(92 plus) <b>A</b>		
(81-91) <b>B</b>		
(69-80) <b>C</b>		
(55-68) <b>D</b>	63	72
(39-54) <b>E</b>		
(21-38) <b>F</b>		
(1-20) <b>G</b>		
Not energy efficient - higher running costs		
<b>England &amp; Wales</b>	EU Directive 2002/91/EC 	



# GROUND FLOOR



Whilst every attempt has been made to ensure the accuracy of the floorplan contained here, measurements of doors, windows, rooms and any other items are approximate and no responsibility is taken for any error, omission or mis-statement. This plan is for illustrative purposes only and should be used as such by any prospective purchaser. The services, systems and appliances shown have not been tested and no guarantee as to their operability or efficiency can be given.  
Made with Metropix ©2025



These particulars are believed to be accurate but they are not guaranteed and do not form a contract. Neither Jordan Fishwick nor the vendor or lessor accept any responsibility in respect of these particulars, which are not intended to be statements or representations of fact and any intending purchaser or lessee must satisfy himself by inspection or otherwise as to the correctness of each of the statements contained in these particulars. Any floorplans on this brochure are for illustrative purposes only and are not necessarily to scale.

Offices at: Chorlton, Didsbury, Disley, Hale, Glossop, Macclesfield, Manchester Deansgate, Manchester Whitworth Street, New Mills, Sale, Wilmslow and Withington

14 Market St, Disley, Cheshire, Stockport SK12 2AA

01663 767878

disley@jordanfishwick.co.uk

www.jordanfishwick.co.uk