



jordan fishwick

Peveril Gardens Disley Stockport



Peveril Gardens Disley Stockport SK12 2RG

£152,500



The Property

Situated on a popular modern development in Newtown Disley and ideally positioned for Newtown Railway station, a delightful and charming two bedroom first floor flat. Part of a block of four and superbly presented throughout. Perfect for many types of buyer, especially those looking at their first home or those wanting to downsize. Lovely views, convenient position and off road parking. Comprising: entrance hall, first floor landing, living room, re-fitted kitchen, two bedrooms and a bathroom with white suite. Pvc double glazing and gas central heating.



- Superb First Floor Flat
- Cul-de-sac Position
- Well Presented Throughout
- Forward Views
- Off Road Parking for Two
- Re-fitted Kitchen
- Gas Central Heating and Pvc Double Glazing
- Perfect For First Time Buyer
- Private Entrance
- Part of a Small Select Modern Development

Postcode

SK12 2RG

EPC Rating


C

Local Authority

Cheshire East

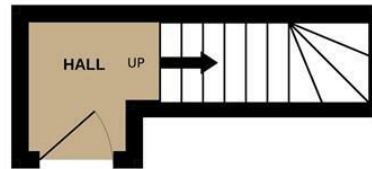
Council Tax

A

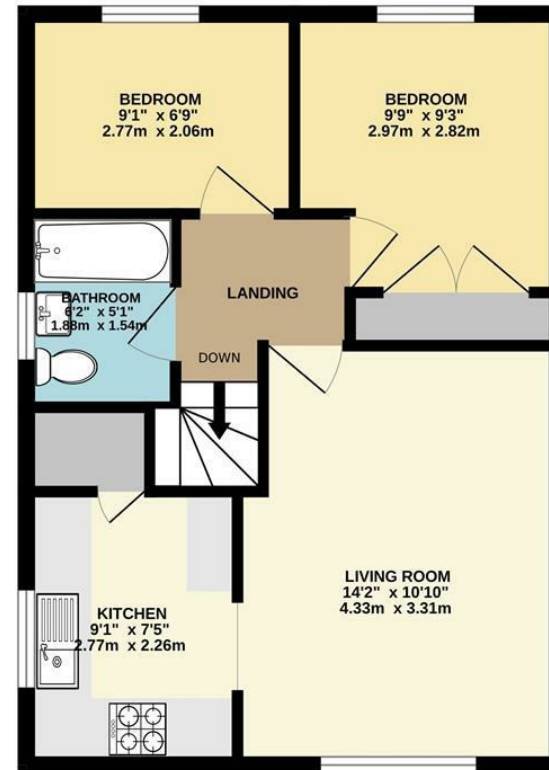
Energy Efficiency Rating		
	Current	Potential
Very energy efficient - lower running costs		
(92 plus) A		
(81-91) B		
(69-80) C	74	77
(55-68) D		
(39-54) E		
(21-38) F		
(1-20) G		
Not energy efficient - higher running costs		
England & Wales	EU Directive 2002/91/EC 	



GROUND FLOOR



1ST FLOOR



Whilst every attempt has been made to ensure the accuracy of the floorplan contained here, measurements of doors, windows, rooms and any other items are approximate and no responsibility is taken for any error, omission or mis-statement. This plan is for illustrative purposes only and should be used as such by any prospective purchaser. The services, systems and appliances shown have not been tested and no guarantee as to their operability or efficiency can be given.
Made with Metropix ©2025



These particulars are believed to be accurate but they are not guaranteed and do not form a contract. Neither Jordan Fishwick nor the vendor or lessor accept any responsibility in respect of these particulars, which are not intended to be statements or representations of fact and any intending purchaser or lessee must satisfy himself by inspection or otherwise as to the correctness of each of the statements contained in these particulars. Any floorplans on this brochure are for illustrative purposes only and are not necessarily to scale.

Offices at: Chorlton, Didsbury, Disley, Hale, Glossop, Macclesfield, Manchester Deansgate, Manchester Whitworth Street, New Mills, Sale, Wilmslow and Withington

14 Market St, Disley, Cheshire, Stockport SK12 2AA

01663 767878

disley@jordanfishwick.co.uk

www.jordanfishwick.co.uk