



**jordanfishwick**

8 STATION ROAD NEW MILLS HIGH PEAK SK22 3JB  
Per Calendar Month £695 Per Calendar

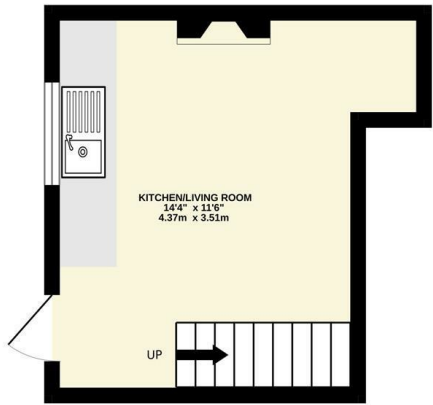


8 STATION ROAD NEW MILLS HIGH PEAK SK22 3JB

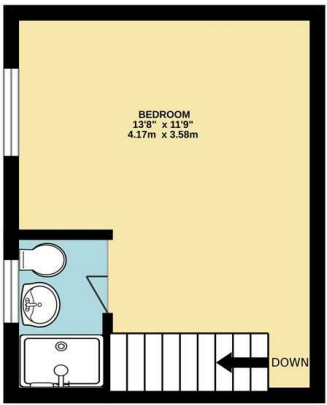
Nestled in the heart of Station Road, New Mills, High Peak, this charming terraced house offers a perfect blend of comfort and convenience. Recently refurbished, this property boasts one bedroom. As you step inside, you are greeted by a welcoming living/kitchen room with laminate flooring, creating a modern and easy-to-maintain space. The staircase leads you to the first floor where you'll find the well-appointed shower room off the bedroom with a white suite. The location of this property is truly unbeatable offering stunning forward views over The Torrs. AVAILABLE NOW.



GROUND FLOOR



FIRST FLOOR



Whilst every attempt has been made to ensure the accuracy of the floorplan contained here, measurements of doors, windows, rooms and any other items are approximate and no responsibility is taken for any error, omission or mis-statement. This plan is for illustrative purposes only and should be used as such by any prospective purchaser. The services, systems and appliances shown have not been tested and no guarantee as to their operability or efficiency can be given.  
Made with Metropix C2024

- Convenient Location for New Mills Amenities
- Energy Rating E Council Tax A
- Refurbished Throughout
- One Bedroom and Combined Kitchen/Living Space
- Stunning Forward Views Over The Torrs



Energy Efficiency Rating		
	Current	Potential
Very energy efficient - lower running costs		
(92 plus) A		
(81-91) B		
(69-80) C		
(55-68) D		
(39-54) E		
(21-38) F		
(1-20) G		
Not energy efficient - higher running costs		
England & Wales	EU Directive 2002/91/EC	

Environmental Impact (CO <sub>2</sub> ) Rating		
	Current	Potential
Very environmentally friendly - lower CO <sub>2</sub> emissions		
(92 plus) A		
(81-91) B		
(69-80) C		
(55-68) D		
(39-54) E		
(21-38) F		
(1-20) G		
Not environmentally friendly - higher CO <sub>2</sub> emissions		
England & Wales	EU Directive 2002/91/EC	