



*jordan fishwick*

Yeardsley Lane Furness Vale





**Yeardsley Lane Furness Vale SK23 7PN**

**£220,000**



### The Property

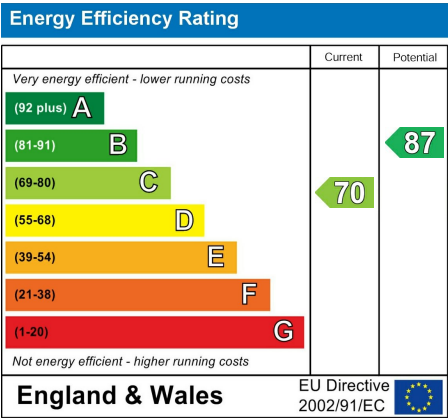
**\*CHAIN FREE\*** Located in the popular village of Furness Vale and within easy reach of the railway station (direct link to Manchester Piccadilly), a superbly presented, stone-built terraced property. Arranged over four floors and perfect for many types of buyers. Situated close to open countryside yet convenient for all local amenities. Comprising: living room, dining kitchen, useful cellar/utility area, two first floor bedrooms, bathroom with white suite and a second floor loft room. Private enclosed gardens, pvc double glazing and gas central heating. Viewing highly recommended.

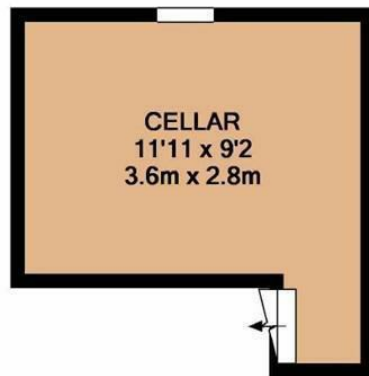




- Superbly Presented Stone Cottage
- Chain Free
- Two Bedrooms Plus Loft Room
- Private Gardens
- Close To Furness Vale Railway Station
- Within Easy Reach Of Open Countryside
- Useful Cellar/Utility/Store Room
- Perfect For First Time Buyers
- Pvc Double Glazing and Gas Central Heating
- Arranged Over Four Floors

**Postcode** SK23 7PN  
**EPC Rating** C  
**Local Authority** High Peak  
**Council Tax** B

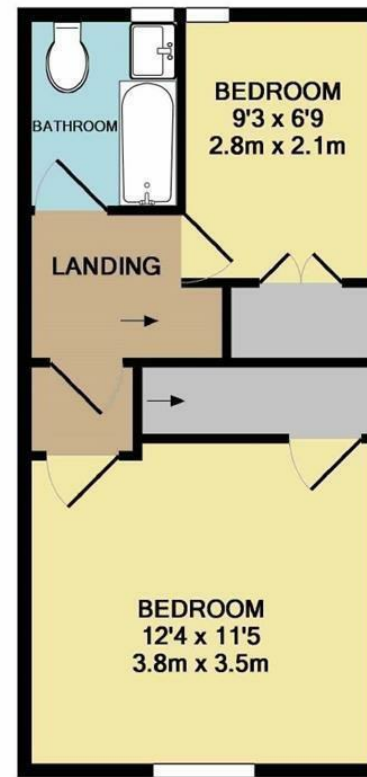




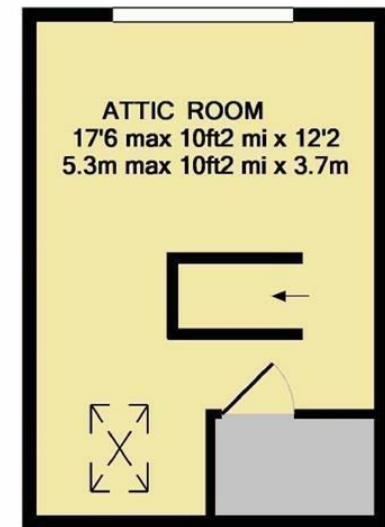
CELLAR



GROUND FLOOR



1ST FLOOR



2ND FLOOR

Whilst every attempt has been made to ensure the accuracy of the floor plan contained here, measurements of doors, windows, rooms and any other items are approximate and no responsibility is taken for any error, omission, or mis-statement. This plan is for illustrative purposes only and should be used as such by any prospective purchaser. The services, systems and appliances shown have not been tested and no guarantee as to their operability or efficiency can be given  
Made with Metropix ©2017



These particulars are believed to be accurate but they are not guaranteed and do not form a contract. Neither Jordan Fishwick nor the vendor or lessor accept any responsibility in respect of these particulars, which are not intended to be statements or representations of fact and any intending purchaser or lessee must satisfy himself by inspection or otherwise as to the correctness of each of the statements contained in these particulars. Any floorplans on this brochure are for illustrative purposes only and are not necessarily to scale.

Offices at: Chorlton, Didsbury, Disley, Hale, Glossop, Macclesfield, Manchester Deansgate, Manchester Whitworth Street, New Mills, Sale, Wilmslow and Withington

14 Market St, Disley, Cheshire, Stockport SK12 2AA

01663 767878

disley@jordanfishwick.co.uk

www.jordanfishwick.co.uk