



*jordan fishwick*

Shallcross Mill Road Whaley Bridge High





## Shallcross Mill Road Whaley Bridge High Peak SK23 7JQ

Asking Price £425,000



### The Property

\*\*\* No ONWARD CHAIN \*\*\* Located on a small popular modern development in Whaley Bridge, a beautifully presented four bedroom detached family home. Spacious, immaculate and extremely versatile accommodation with contemporary styling throughout. Pvc double glazing, gas central heating and comprising: storm porch, entrance hall, re-fitted wc, living room with wood burning stove, 24FT open plan dining kitchen with utility, useful conservatory, first floor master bedroom with en-suite shower room, three further bedrooms and a family bathroom. Enclosed South Westerly facing garden with lawn and large patio, driveway and single garage. Viewing highly recommended.





- Immaculately Presented Throughout
- Convenient Popular Location
- Modern Development
- Four Bedroom Detached Home
- Useful Conservatory
- 24FT Dining Kitchen
- Wood Burning Stove
- South Westerly Garden
- Driveway and Garage
- NO ONWARD CHAIN

Postcode

SK23 7JQ

EPC Rating


C

Local Authority

High Peak

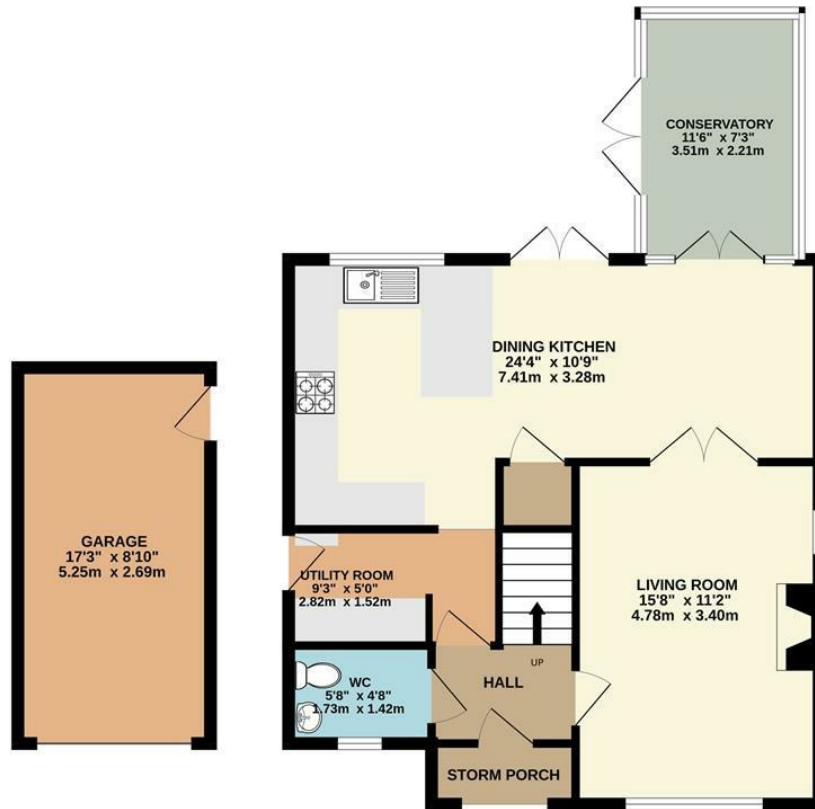
Council Tax

D

Energy Efficiency Rating		
	Current	Potential
Very energy efficient - lower running costs		
(92 plus) A		91
(81-91) B		
(69-80) C	69	
(55-68) D		
(39-54) E		
(21-38) F		
(1-20) G		
Not energy efficient - higher running costs		
England & Wales		EU Directive 2002/91/EC 



GROUND FLOOR



1ST FLOOR



Whilst every attempt has been made to ensure the accuracy of the floorplan contained here, measurements of doors, windows, rooms and any other items are approximate and no responsibility is taken for any error, omission or mis-statement. This plan is for illustrative purposes only and should be used as such by any prospective purchaser. The services, systems and appliances shown have not been tested and no guarantee as to their operability or efficiency can be given.  
Made with Metropix ©2023



These particulars are believed to be accurate but they are not guaranteed and do not form a contract. Neither Jordan Fishwick nor the vendor or lessor accept any responsibility in respect of these particulars, which are not intended to be statements or representations of fact and any intending purchaser or lessee must satisfy himself by inspection or otherwise as to the correctness of each of the statements contained in these particulars. Any floorplans on this brochure are for illustrative purposes only and are not necessarily to scale.

Offices at: Chorlton, Didsbury, Disley, Hale, Glossop, Macclesfield, Manchester Deansgate, Manchester Whitworth Street, New Mills, Sale, Wilmslow and Withington

14 Market St, Disley, Cheshire, Stockport SK12 2AA

01663 767878

disley@jordanfishwick.co.uk

www.jordanfishwick.co.uk