



*jordan fishwick*

Buxton Road Disley Stockport





**Buxton Road Disley Stockport SK12 2DZ**

**Guide Price £210,000**



## The Property

Conveniently positioned for Disley Village and amenities, a superb brick built terraced home. Arranged over three floors and offered for sale with no chain, this delightful property would be ideal for the first time buyer. Tiered garden with large paved patio and store, pvc double glazing and gas central heating. Comprising: living room, fitted dining kitchen, first floor double bedroom with fitted wardrobes, box room and shower room with a second floor loft room. Viewing highly recommended.





- Superb Terraced Cottage
- Convenient Disley Village Location
- Arranged Over Three Floors
- Well Presented Throughout
- Double Bedroom, Boxroom and Loft Room
- Tiered Garden with Large Paved Patio
- Pvc Double Glazing and Gas Central Heating
- No Chain
- Perfect For The First Time Buyer

Postcode

SK12 2DZ

EPC Rating

Local Authority

Cheshire East

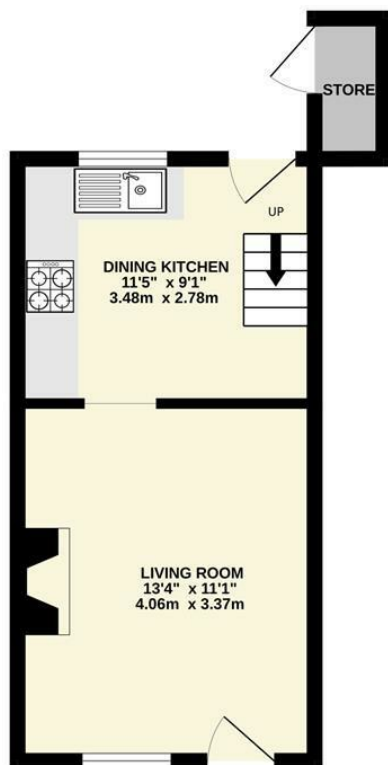
Council Tax

B

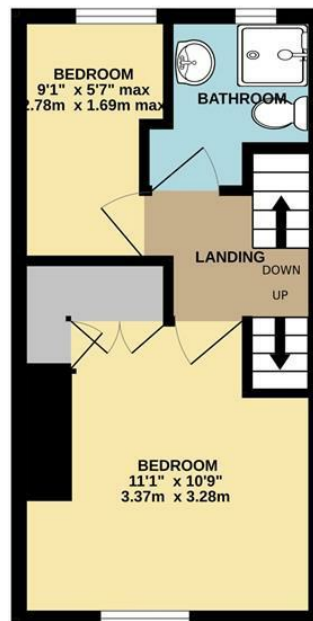
| Energy Efficiency Rating                    |   |           |
|---|---|-----------|
|   | Current   | Potential |
| Very energy efficient - lower running costs |   |           |
| (92 plus) A                                 |   |           |
| (81-91) B                                   |   |           |
| (69-80) C                                   |   |           |
| (55-68) D                                   |   |           |
| (39-54) E                                   |   |           |
| (21-38) F                                   |   |           |
| (1-20) G                                    |   |           |
| Not energy efficient - higher running costs |   |           |
| England & Wales                             | EU Directive 2002/91/EC  |           |



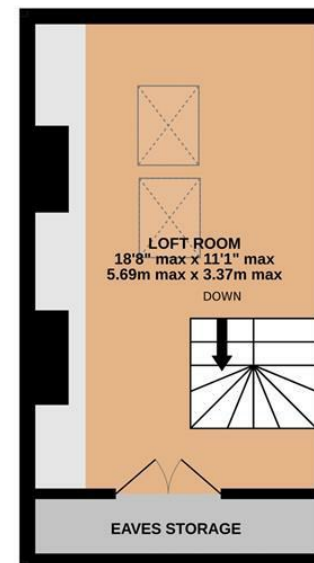
GROUND FLOOR



1ST FLOOR



2ND FLOOR



Whilst every attempt has been made to ensure the accuracy of the floorplan contained here, measurements of doors, windows, rooms and any other items are approximate and no responsibility is taken for any error, omission or mis-statement. This plan is for illustrative purposes only and should be used as such by any prospective purchaser. The services, systems and appliances shown have not been tested and no guarantee as to their operability or efficiency can be given.  
Made with Metropix ©2025



These particulars are believed to be accurate but they are not guaranteed and do not form a contract. Neither Jordan Fishwick nor the vendor or lessor accept any responsibility in respect of these particulars, which are not intended to be statements or representations of fact and any intending purchaser or lessee must satisfy himself by inspection or otherwise as to the correctness of each of the statements contained in these particulars. Any floorplans on this brochure are for illustrative purposes only and are not necessarily to scale.

Offices at: Chorlton, Didsbury, Disley, Hale, Glossop, Macclesfield, Manchester Deansgate, Manchester Whitworth Street, New Mills, Sale, Wilmslow and Withington

14 Market St, Disley, Cheshire, Stockport SK12 2AA

01663 767878

disley@jordanfishwick.co.uk

www.jordanfishwick.co.uk