



jordan fishwick

Hollymount Gardens Stockport



Hollymount Gardens Stockport SK2 7NF

£285,000



The Property

A beautifully presented three bedroom semi-detached property situated in a well sought after location. Conveniently placed for all local amenities, shops and transport links with good access to local Schools. Upon entry, the property comprises of: Entrance porch with stairs leading to the first floor, access of the porch into the bright and spacious living room, modern kitchen/diner with a range of base and wall mounted units, separate snug room with access to the rear. To the first floor are two double bedrooms, a further single bedroom and a tastefully decorated modern bathroom suite. Externally to the front of the property is an immaculately maintained lawned front garden with off-road parking. Externally, is a low maintenance garden with mature hedging providing a private enclosed space to enjoy. Viewings of this property are highly recommended and viewings are made via appointment only.



Postcode SK2 7NF

EPC Rating

Local Authority Stockport Council

Council Tax C

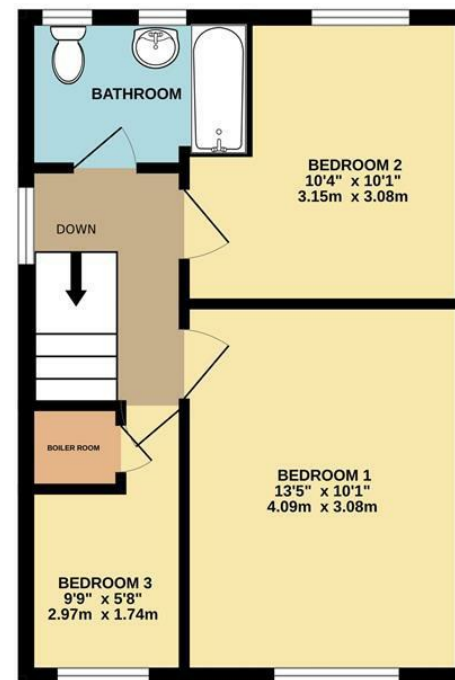
Energy Efficiency Rating		
	Current	Potential
Very energy efficient - lower running costs		
(92 plus) A		
(81-91) B		
(69-80) C		
(55-68) D		
(39-54) E		
(21-38) F		
(1-20) G		
Not energy efficient - higher running costs		
England & Wales	EU Directive 2002/91/EC	



GROUND FLOOR
598 sq.ft. (55.5 sq.m.) approx.



1ST FLOOR
376 sq.ft. (34.9 sq.m.) approx.



TOTAL FLOOR AREA : 973 sq.ft. (90.4 sq.m.) approx.

Whilst every attempt has been made to ensure the accuracy of the floorplan contained here, measurements of doors, windows, rooms and any other items are approximate and no responsibility is taken for any error, omission or mis-statement. This plan is for illustrative purposes only and should be used as such by any prospective purchaser. The services, systems and appliances shown have not been tested and no guarantee as to their operability or efficiency can be given.
Made with Metropix ©2025



These particulars are believed to be accurate but they are not guaranteed and do not form a contract. Neither Jordan Fishwick nor the vendor or lessor accept any responsibility in respect of these particulars, which are not intended to be statements or representations of fact and any intending purchaser or lessee must satisfy himself by inspection or otherwise as to the correctness of each of the statements contained in these particulars. Any floorplans on this brochure are for illustrative purposes only and are not necessarily to scale.

Offices at: Chorlton, Didsbury, Disley, Hale, Glossop, Macclesfield, Manchester Deansgate, Manchester Whitworth Street, New Mills, Sale, Wilmslow and Withington

14 Market Street, Disley, Cheshire, SK12 2AA

01663 76 78 78

disley@jordanfishwick.co.uk

www.jordanfishwick.co.uk