



*jordan fishwick*

Beresford Avenue Chapel-En-Le-Frith High



## Beresford Avenue Chapel-En-Le-Frith High Peak SK23 0PZ

£210,000



### The Property


Situated on a popular quiet road within easy reach of the local amenities as well as the open countryside, a two double bedroom quasi semi. Well presented throughout and offered for sale with no chain, this charming property would be an ideal starter home for the first time buyer. Pvc double glazing, gas central heating and comprising: entrance porch, living room, dining kitchen, two bedrooms (smallest 10'3 x 8'3) and a bathroom with white suite. Lawn garden and viewing highly recommended.



- Quiet Cul-de-sac Position
- Two Good Bedrooms
- Brick Built Quasi Semi-Detached
- Convenient For Local Amenities
- No Chain
- Pvc Double Glazing and Gas Central Heating
- Perfect First Time Buy
- 18ft Living Room
- 17ft Dining Kitchen
- Well Presented Throughout

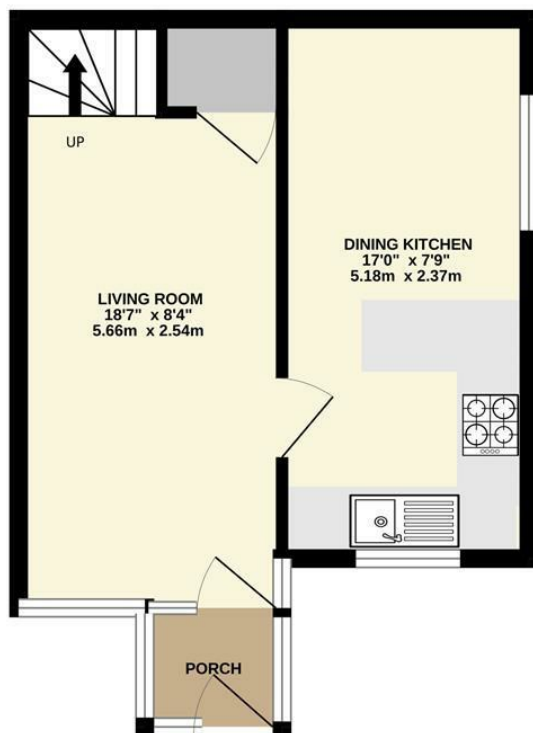


**Postcode** SK23 0PZ  
**EPC Rating** D  
**Local Authority** High Peak  
**Council Tax** B

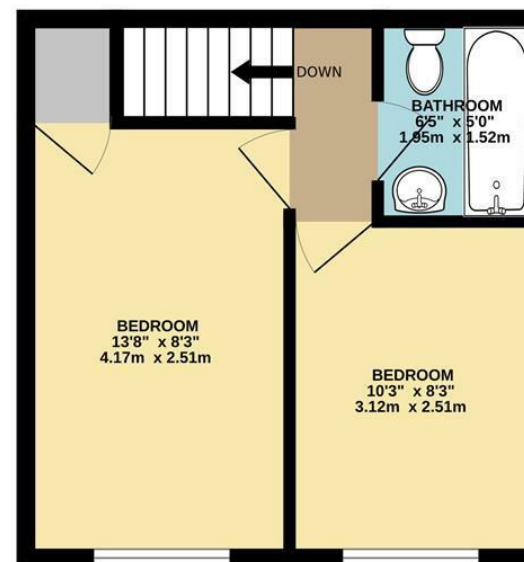
Energy Efficiency Rating		
	Current	Potential
Very energy efficient - lower running costs		
(92 plus) <b>A</b>		<b>87</b>
(81-91) <b>B</b>		
(69-80) <b>C</b>	<b>66</b>	
(55-68) <b>D</b>		
(39-54) <b>E</b>		
(21-38) <b>F</b>		
(1-20) <b>G</b>		
Not energy efficient - higher running costs		
<b>England &amp; Wales</b>		EU Directive 2002/91/EC 



GROUND FLOOR



1ST FLOOR



Whilst every attempt has been made to ensure the accuracy of the floorplan contained here, measurements of doors, windows, rooms and any other items are approximate and no responsibility is taken for any error, omission or mis-statement. This plan is for illustrative purposes only and should be used as such by any prospective purchaser. The services, systems and appliances shown have not been tested and no guarantee as to their operability or efficiency can be given.  
Made with Metropix ©2024



These particulars are believed to be accurate but they are not guaranteed and do not form a contract. Neither Jordan Fishwick nor the vendor or lessor accept any responsibility in respect of these particulars, which are not intended to be statements or representations of fact and any intending purchaser or lessee must satisfy himself by inspection or otherwise as to the correctness of each of the statements contained in these particulars. Any floorplans on this brochure are for illustrative purposes only and are not necessarily to scale.

Offices at: Chorlton, Didsbury, Disley, Hale, Glossop, Macclesfield, Manchester Deansgate, Manchester Whitworth Street, New Mills, Sale, Wilmslow and Withington

14 Market St, Disley, Cheshire, Stockport SK12 2AA

01663 767878

disley@jordanfishwick.co.uk

www.jordanfishwick.co.uk