



jordan fishwick

Goyt Road Disley Stockport



**Goyt Road Disley Stockport SK12
2BT**

Offers In The Region Of



The Property

Jordan Fishwick are delighted to bring to market this generously sized ground floor apartment which boasts stunning views over Lyme Park from its South Westerly facing orientation, enjoyed in its beautifully relandscaped garden. In brief the property comprises of: Entrance hallway, modern fitted kitchen, living room with electric feature fireplace, family bathroom and storage. Externally, the property is set back behind off road parking for one vehicle and a lawned garden. Whilst to the rear, the split level garden has been beautifully maintained and upgraded by its current owners. With the top tier having been laid with beautiful 'Indian Stone' leading down to a lawned garden which is boarded by timber fencing. Viewings of this property are highly recommended.



- Ground Floor Apartment
- Off Road Parking
- South Westerly Facing Garden
- Two Double Bedrooms
- Gas Central Heating
- Beautiful Remodeled Rear Garden
- Close to All Local Amenities & Transport Links
- Stunning Views

Postcode

SK12 2BT

EPC Rating

C

Local Authority

Cheshire East

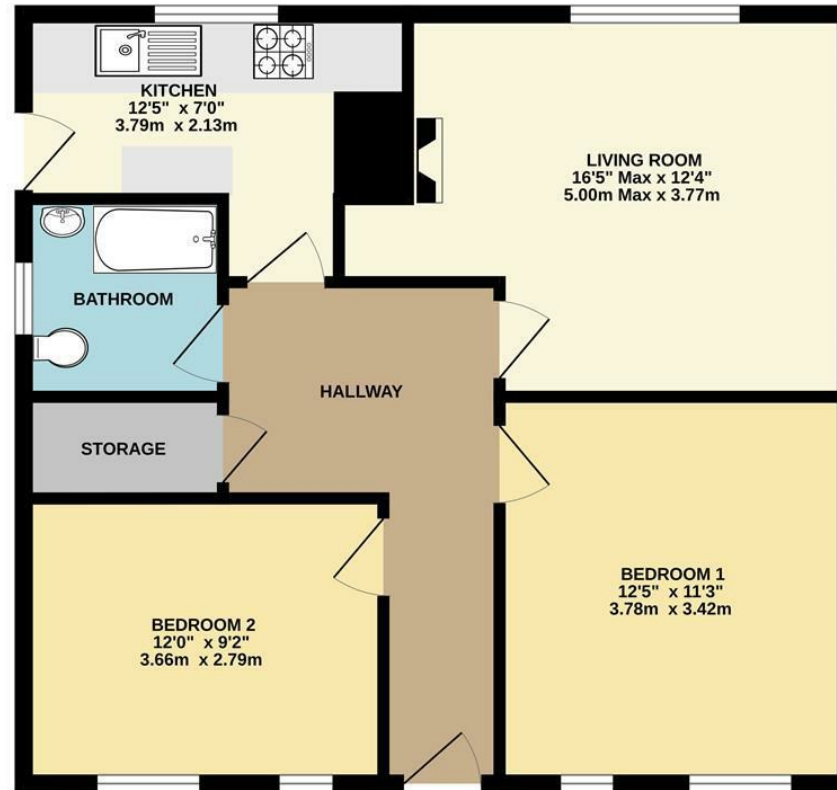
Council Tax

A

Energy Efficiency Rating		
	Current	Potential
Very energy efficient - lower running costs		
(92 plus) A		
(81-91) B		
(69-80) C	73	76
(55-68) D		
(39-54) E		
(21-38) F		
(1-20) G		
Not energy efficient - higher running costs		
England & Wales	EU Directive 2002/91/EC	



GROUND FLOOR



Whilst every attempt has been made to ensure the accuracy of the floorplan contained here, measurements of doors, windows, rooms and any other items are approximate and no responsibility is taken for any error, omission or mis-statement. This plan is for illustrative purposes only and should be used as such by any prospective purchaser. The services, systems and appliances shown have not been tested and no guarantee as to their operability or efficiency can be given.
Made with Metropix ©2025



These particulars are believed to be accurate but they are not guaranteed and do not form a contract. Neither Jordan Fishwick nor the vendor or lessor accept any responsibility in respect of these particulars, which are not intended to be statements or representations of fact and any intending purchaser or lessee must satisfy himself by inspection or otherwise as to the correctness of each of the statements contained in these particulars. Any floorplans on this brochure are for illustrative purposes only and are not necessarily to scale.

Offices at: Chorlton, Didsbury, Disley, Hale, Glossop, Macclesfield, Manchester Deansgate, Manchester Whitworth Street, New Mills, Sale, Wilmslow and Withington

14 Market Street, Disley, Cheshire, SK12 2AA

01663 76 78 78

disley@jordanfishwick.co.uk

www.jordanfishwick.co.uk