



*Jordan fishwick*

New Road Whaley Bridge High Peak



## New Road Whaley Bridge High Peak SK23 7JG

£190,000



### The Property

\*\* This property is for sale by Modern Method of Auction powered by iamsold LTD - Starting Bid £190,000 + Reservation Fee\*\*

\*\*\* In Need of Updating \*\*\* Situated in a popular location in Whaley Bridge and offering fantastic potential, a three double bedroom, stone/brick built end of terrace. Off road parking, integral garage and manageable garden. Comprising: Entrance hall, living room, dining room, kitchen, wc, three first floor bedrooms (smallest 10'4 x 8'8), bathroom and wc. No Chain




- For Sale By Modern Auction
- Extended End Of Terrace
- Three Generous Bedrooms
- Two Reception Rooms
- In Need Of Updating
- Popular Location
- Integral Garage
- Driveway and Gardens
- Subject to Reserve Price and Reservation Fee

**Postcode** SK23 7JG

**EPC Rating** F

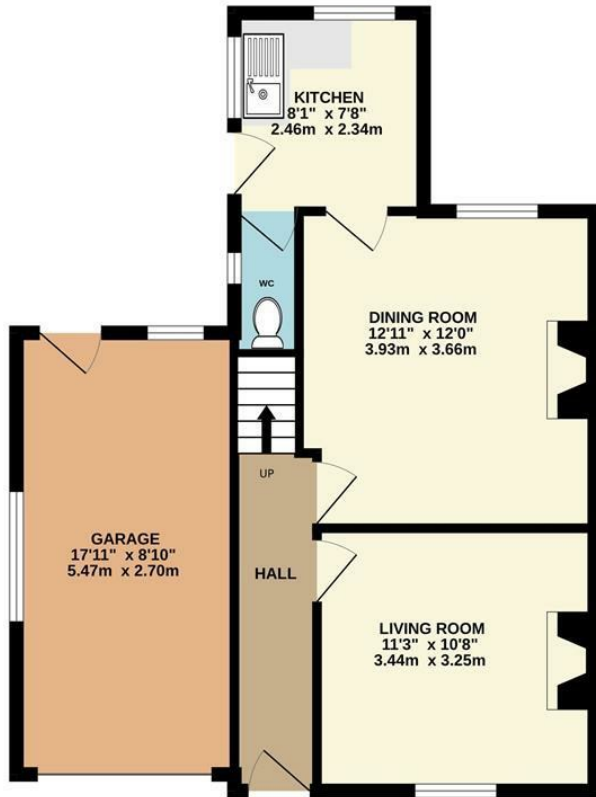
**Local Authority** High Peak

**Council Tax** C

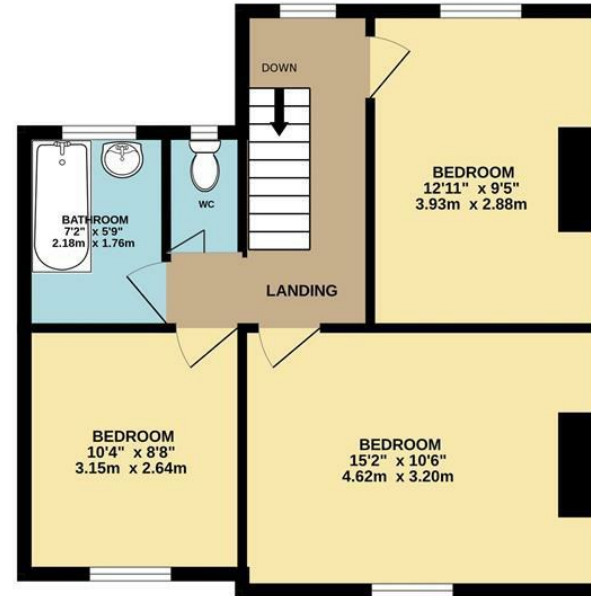
Energy Efficiency Rating		Current	Potential
Very energy efficient - lower running costs			
(92 plus) A			
(81-91) B			81
(69-80) C			
(55-68) D			
(39-54) E		37	
(21-38) F			
(1-20) G			
Not energy efficient - higher running costs			
<b>England &amp; Wales</b>		EU Directive 2002/91/EC 	



GROUND FLOOR



1ST FLOOR



Whilst every attempt has been made to ensure the accuracy of the floorplan contained here, measurements of doors, windows, rooms and any other items are approximate and no responsibility is taken for any error, omission or mis-statement. This plan is for illustrative purposes only and should be used as such by any prospective purchaser. The services, systems and appliances shown have not been tested and no guarantee as to their operability or efficiency can be given.  
Made with Metropix ©2024



These particulars are believed to be accurate but they are not guaranteed and do not form a contract. Neither Jordan Fishwick nor the vendor or lessor accept any responsibility in respect of these particulars, which are not intended to be statements or representations of fact and any intending purchaser or lessee must satisfy himself by inspection or otherwise as to the correctness of each of the statements contained in these particulars. Any floorplans on this brochure are for illustrative purposes only and are not necessarily to scale.

Offices at: Chorlton, Didsbury, Disley, Hale, Glossop, Macclesfield, Manchester Deansgate, Manchester Whitworth Street, New Mills, Sale, Wilmslow and Withington

14 Market Street, Disley, Cheshire, SK12 2AA

01663 76 78 78

disley@jordanfishwick.co.uk

www.jordanfishwick.co.uk