



Jordan fishwick

Buxton Road Disley Stockport



Buxton Road Disley Stockport SK12 2RH

£365,000



The Property

Sat back from the road and backing onto open fields with the most delightful views, an extended 1930's built, bay fronted semi-detached family home. Great sized gardens and well presented accommodation comprising: entrance hall, living room, dining room with French doors opening to the garden, breakfast kitchen, three first floor bedrooms and a bathroom with a white suite. Pvc double glazing, gas central heating, open fireplace and wood burning stove. Convenient location for Newton railway station and Disley's amenities. Viewing highly recommended.




- 1930's Bay Fronted Semi-Detached
- Set Back From The Road
- Backing One Fields
- Open Views
- Large Gardens
- Character Features
- Three Bedrooms
- Convenient Position For Newtown Railway Station
- Well Presented Throuhgout
- Open Fire and Wood Burning Stove

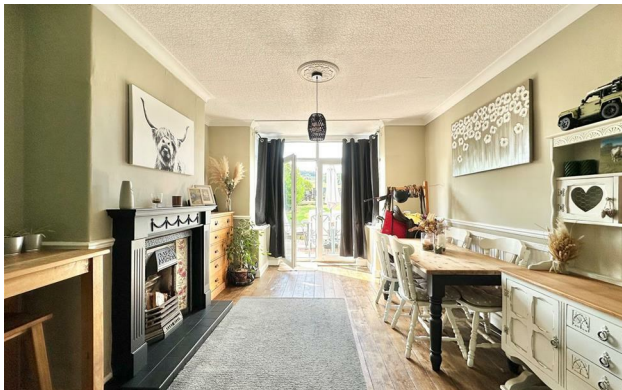
Postcode SK12 2RH

EPC Rating F

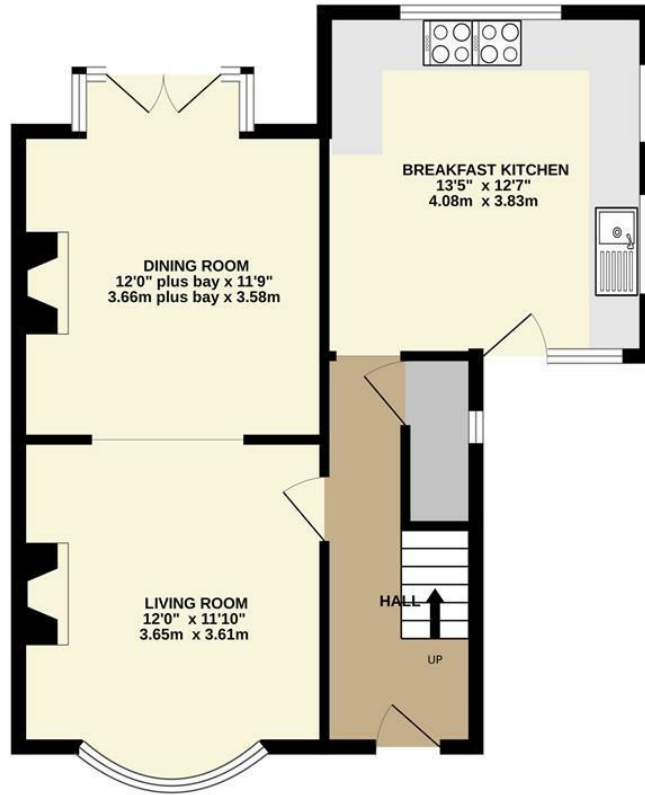
Local Authority Cheshire East

Council Tax D

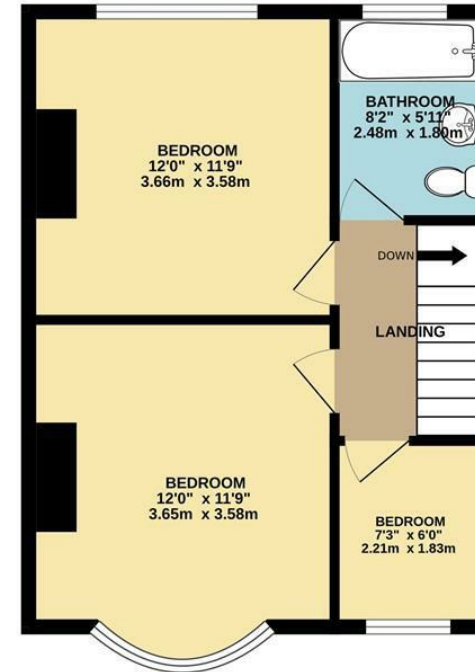
Energy Efficiency Rating		Current	Potential
Very energy efficient - lower running costs			
(92 plus) A			94
(81-91) B			
(69-80) C			
(55-68) D			
(39-54) E		38	
(21-38) F			
(1-20) G			
Not energy efficient - higher running costs			
England & Wales		EU Directive 2002/91/EC 	



GROUND FLOOR



1ST FLOOR



Whilst every attempt has been made to ensure the accuracy of the floorplan contained here, measurements of doors, windows, rooms and any other items are approximate and no responsibility is taken for any error, omission or mis-statement. This plan is for illustrative purposes only and should be used as such by any prospective purchaser. The services, systems and appliances shown have not been tested and no guarantee as to their operability or efficiency can be given.
Made with Metropix ©2024



These particulars are believed to be accurate but they are not guaranteed and do not form a contract. Neither Jordan Fishwick nor the vendor or lessor accept any responsibility in respect of these particulars, which are not intended to be statements or representations of fact and any intending purchaser or lessee must satisfy himself by inspection or otherwise as to the correctness of each of the statements contained in these particulars. Any floorplans on this brochure are for illustrative purposes only and are not necessarily to scale.

Offices at: Chorlton, Didsbury, Disley, Hale, Glossop, Macclesfield, Manchester Deansgate, Manchester Whitworth Street, New Mills, Sale, Wilmslow and Withington

14 Market Street, Disley, Cheshire, SK12 2AA

01663 76 78 78

disley@jordanfishwick.co.uk

www.jordanfishwick.co.uk