



*Jordan fishwick*

Yardsley Lane Furness Vale High Peak





## Yeardsley Lane Furness Vale High Peak SK23 7PN

£395,000



### The Property

Wow!! Truly deceptive and a must see!! Arranged over **FOUR FLOORS** together with a **DETACHED TWO STOREY OUTBUILDING**. Located in Furness Vale and convenient for the railway station this stone built end of terrace has something for all. A short walk from open countryside, this family home boasts three bedrooms plus a loft conversion and basement conversion offering well-presented, versatile accommodation suitable for many needs. Beautiful private garden adjoining a wooded copse and gated driveway. Wealth of character features including log burner and open fire as well as re-fitted kitchen and period bathroom. Viewing essential.





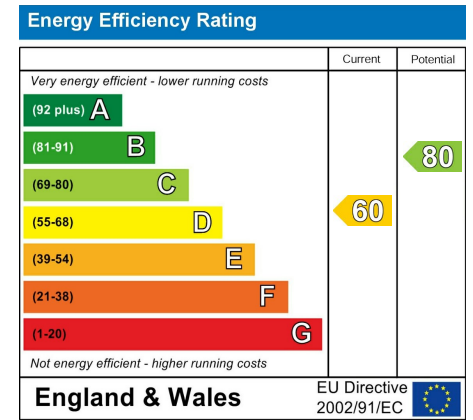
- Stone Built End Of Terrace
- Three Bedrooms Plus Loft Room
- Converted Basement With WC
- Detached Two Storey Outbuilding
- Private Gardens Adjoining Woodland
- Gated Off Road Parking
- Wealth Of Character
- Over Four Floors Of Accommodation
- Close To Countryside and Furness Vale Railway Station
- Well Presented Throughout

**Postcode** SK23 7PN

**EPC Rating** D

**Local Authority** High Peak

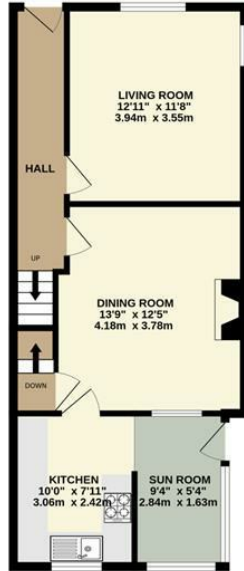
**Council Tax** C



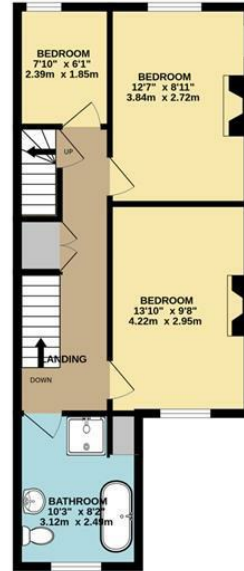
BASEMENT



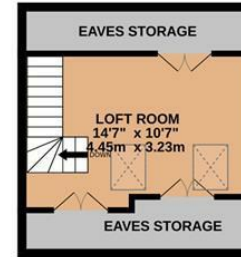
GROUND FLOOR



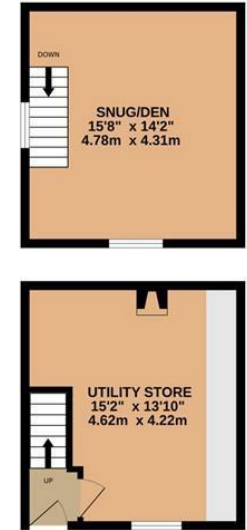
1ST FLOOR



2ND FLOOR



OUTBUILDING



Whilst every attempt has been made to ensure the accuracy of the floorplan contained here, measurements of doors, windows, rooms and any other items are approximate and no responsibility is taken for any error, omission or mis-statement. This plan is for illustrative purposes only and should be used as such by any prospective purchaser. The services, systems and appliances shown have not been tested and no guarantee as to their operability or efficiency can be given.  
Made with Metropix ©2024



These particulars are believed to be accurate but they are not guaranteed and do not form a contract. Neither Jordan Fishwick nor the vendor or lessor accept any responsibility in respect of these particulars, which are not intended to be statements or representations of fact and any intending purchaser or lessee must satisfy himself by inspection or otherwise as to the correctness of each of the statements contained in these particulars. Any floorplans on this brochure are for illustrative purposes only and are not necessarily to scale.

Offices at: Chorlton, Didsbury, Disley, Hale, Glossop, Macclesfield, Manchester Deansgate, Manchester Whitworth Street, New Mills, Sale, Wilmslow and Withington

14 Market Street, Disley, Cheshire, SK12 2AA

01663 76 78 78

disley@jordanfishwick.co.uk

www.jordanfishwick.co.uk