



*jordan fishwick*

Buxton Road Newtown Disley Stockport





**Buxton Road Newtown Disley  
Stockport SK12 2RQ**

**£349,950**



### The Property

Set back from the road and BACKING ONTO FIELDS, a 1930's built, bay fronted semi-detached property. Established private gardens and OFF ROAD PARKING for at least two cars. Boasting many original features and comprising: storm porch, entrance hall, open plan ground floor accommodation with open fire and multi-fuel burner, kitchen with Butchers block worktops and Belfast style sink unit, three first floor bedrooms, bathroom and wc. VIEWING HIGHLY RECOMMENDED. Energy Rating Band D





- 1930's Bay Fronted Semi-Detached Property
- Fabulous Potential
- Character Features Inc Wood Burning Stove
- Three Bedrooms
- Front and Rear Gardens
- Block Paved Driveway
- Backing onto Open Fields

**Postcode** SK12 2RQ

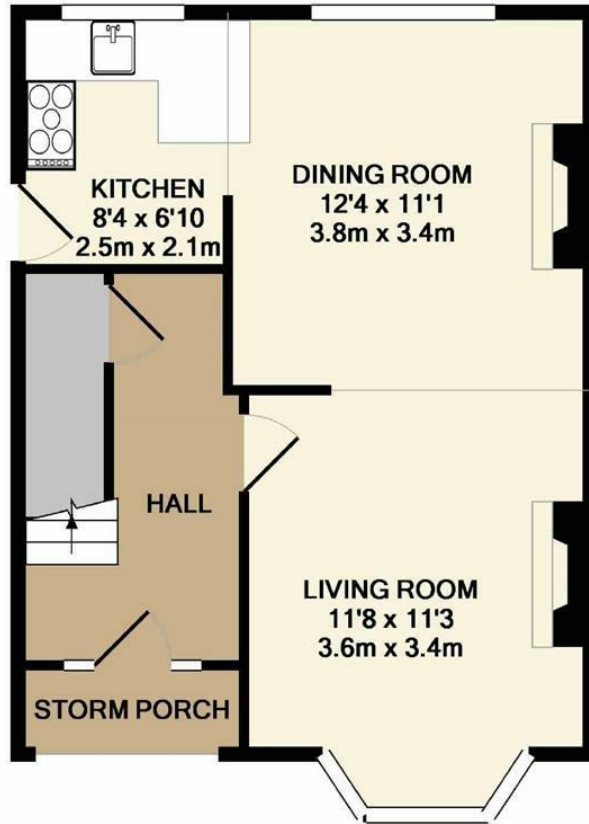
**EPC Rating** D

**Local Authority** Cheshire East

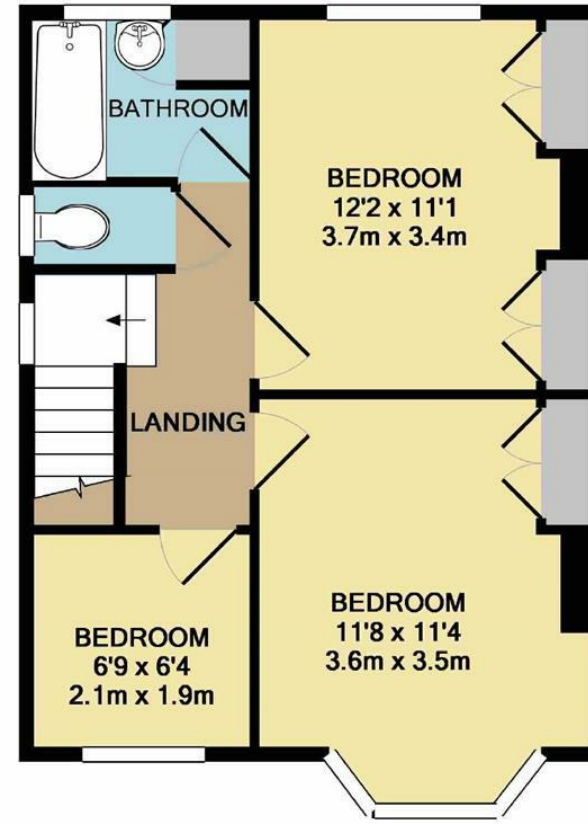
**Council Tax** D

Energy Efficiency Rating		Current	Potential
Very energy efficient - lower running costs			
(92 plus)	A		
(81-91)	B		83
(69-80)	C		
(55-68)	D	56	
(39-54)	E		
(21-38)	F		
(1-20)	G		
Not energy efficient - higher running costs			
<b>England &amp; Wales</b>			EU Directive 2002/91/EC





GROUND FLOOR



1ST FLOOR

Whilst every attempt has been made to ensure the accuracy of the floor plan contained here, measurements of doors, windows, rooms and any other items are approximate and no responsibility is taken for any error, omission, or mis-statement. This plan is for illustrative purposes only and should be used as such by any prospective purchaser. The services, systems and appliances shown have not been tested and no guarantee as to their operability or efficiency can be given  
 Made with Metropix ©2019



These particulars are believed to be accurate but they are not guaranteed and do not form a contract. Neither Jordan Fishwick nor the vendor or lessor accept any responsibility in respect of these particulars, which are not intended to be statements or representations of fact and any intending purchaser or lessee must satisfy himself by inspection or otherwise as to the correctness of each of the statements contained in these particulars. Any floorplans on this brochure are for illustrative purposes only and are not necessarily to scale.

Offices at: Chorlton, Didsbury, Disley, Hale, Glossop, Macclesfield, Manchester Deansgate, Manchester Whitworth Street, New Mills, Sale, Wilmslow and Withington

14 Market Street, Disley, Cheshire, SK12 2AA

01663 76 78 78

disley@jordanfishwick.co.uk

www.jordanfishwick.co.uk