



*jordan fishwick*

Whitehough Chinley High Peak





## Whitehough Chinley High Peak SK23 6EJ

Offers Over £450,000



### The Property

Situated in Picturesque Whitehough, neighbouring popular Chinley, a stunning bay-fronted, stone-built semi-detached property of character. Superb open views from all aspects and beautifully renovated in recent years, this deceptive, extended four bedroom home has been finished to a high specification throughout. Arranged over four floors and comprising: entrance vestibule, hall, living room with open fire, 26ft open plan dining kitchen with island, velux skylights and wood burning stove, wc, useful cellar, three first floor bedrooms, re-fitted bathroom and second floor attic bedroom. Walled frontage and enclosed lawn gardens adjoining a paddock. Excellent semi rural position yet close to all local amenities in Chinley Village (including school, shops and railway station). Viewing highly recommended.





- Beautiful Bay Fronted Semi-Detached
- Stunning Views Over Fields
- Popular Village Location
- Arranged Over Four Floors
- 26ft Extended, Luxurious Kitchen
- Open Fire and Wood Burning Stove
- Private Gardens
- Convenient For Whitehough and Chinley Amenities
- Refurbished in Recent Years
- A Must See!

Postcode

SK23 6EJ

EPC Rating

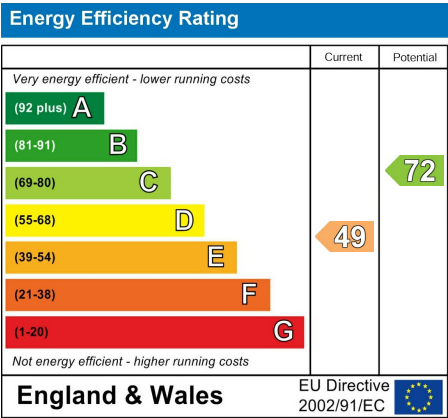
E

Local Authority

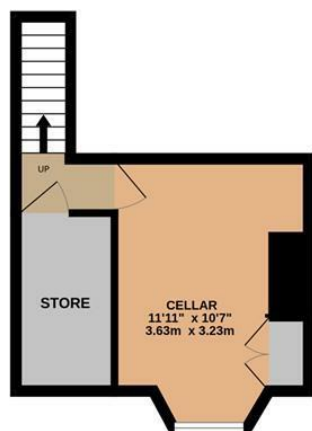
High Peak

Council Tax

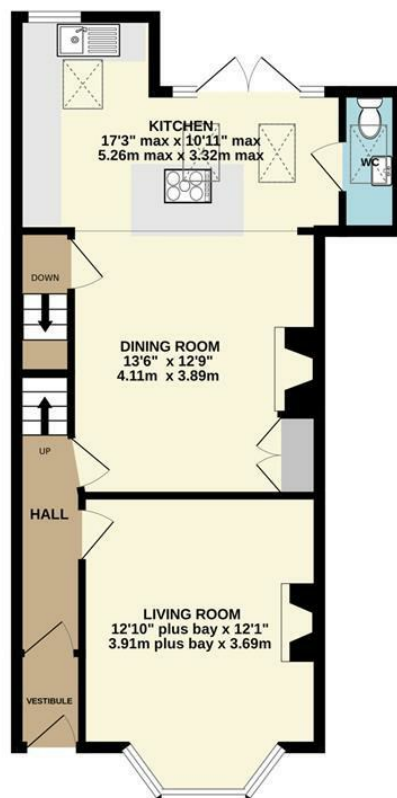
C



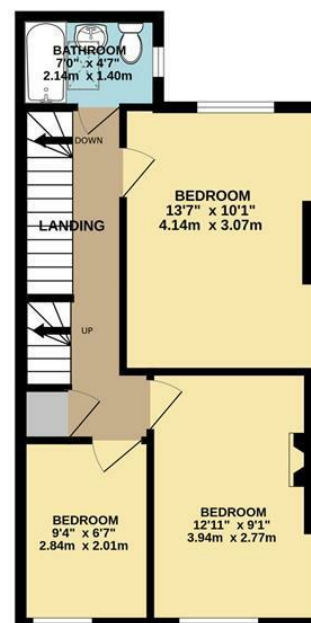
BASEMENT



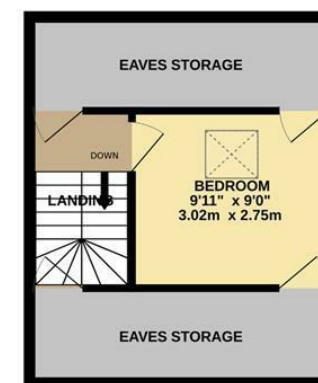
GROUND FLOOR



1ST FLOOR



2ND FLOOR



Whilst every attempt has been made to ensure the accuracy of the floorplan contained here, measurements of doors, windows, rooms and any other items are approximate and no responsibility is taken for any error, omission or mis-statement. This plan is for illustrative purposes only and should be used as such by any prospective purchaser. The services, systems and appliances shown have not been tested and no guarantee as to their operability or efficiency can be given.  
Made with Metropix ©2024



These particulars are believed to be accurate but they are not guaranteed and do not form a contract. Neither Jordan Fishwick nor the vendor or lessor accept any responsibility in respect of these particulars, which are not intended to be statements or representations of fact and any intending purchaser or lessee must satisfy himself by inspection or otherwise as to the correctness of each of the statements contained in these particulars. Any floorplans on this brochure are for illustrative purposes only and are not necessarily to scale.

Offices at: Chorlton, Didsbury, Disley, Hale, Glossop, Macclesfield, Manchester Deansgate, Manchester Whitworth Street, New Mills, Sale, Wilmslow and Withington

14 Market Street, Disley, Cheshire, SK12 2AA

01663 76 78 78

disley@jordanfishwick.co.uk

www.jordanfishwick.co.uk