



jordan fishwick

Buxton Road Chinley High Peak



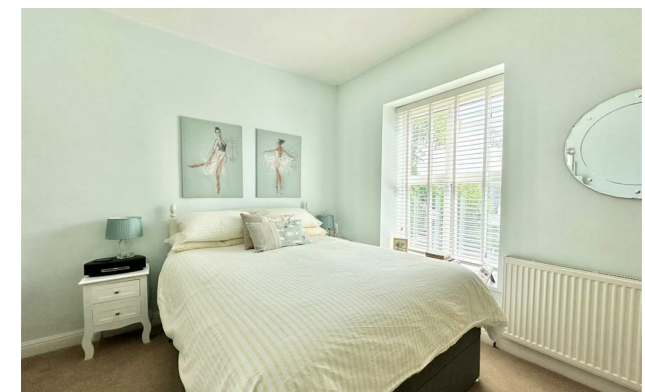
**Buxton Road Chinley High Peak
SK23 6DJ**

£275,000



The Property

Close to the heart of Chinley Village, a delightful and deceptive TWO DOUBLE BEDROOM terraced cottage. Full of charm, yet bright and spacious, this superb home is ready to walk into. With all of Chinleys amenities on your doorstep, including railway station with links to Manchester and Sheffield, this period cottage will appeal to many. Much improved in recent years and offering the possibility of off road parking to the rear. Comprising: living room with multi fuel burning stove, kitchen with butchers block work tops, useful ground floor shower room, two first floor double bedrooms and a second contemporary shower room. Beautiful gardens and pvc double glazing. Viewing highly recommended.




- Charming Stone Built Cottage
- Beautifully Presented
- Central Chinley Location
- Convenient for Shops, School and Railway
- Two Double Bedrooms
- Two Shower Rooms
- Multi Fuel Stove
- Walled Frontage and Enclosed Garden With Shed
- Potential For Off Road Parking To Rear

Postcode SK23 6DJ

EPC Rating E

Local Authority High Peak

Council Tax B

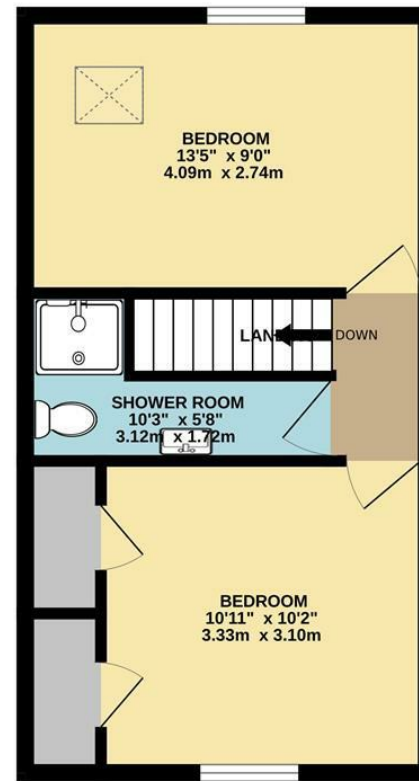
Energy Efficiency Rating		Current	Potential
Very energy efficient - lower running costs			100
(92 plus) A			
(81-91) B			
(69-80) C			
(55-68) D		47	
(39-54) E			
(21-38) F			
(1-20) G			
Not energy efficient - higher running costs			
England & Wales		EU Directive 2002/91/EC 	



GROUND FLOOR



1ST FLOOR



Whilst every attempt has been made to ensure the accuracy of the floorplan contained here, measurements of doors, windows, rooms and any other items are approximate and no responsibility is taken for any error, omission or mis-statement. This plan is for illustrative purposes only and should be used as such by any prospective purchaser. The services, systems and appliances shown have not been tested and no guarantee as to their operability or efficiency can be given.
Made with Metropix ©2024



These particulars are believed to be accurate but they are not guaranteed and do not form a contract. Neither Jordan Fishwick nor the vendor or lessor accept any responsibility in respect of these particulars, which are not intended to be statements or representations of fact and any intending purchaser or lessee must satisfy himself by inspection or otherwise as to the correctness of each of the statements contained in these particulars. Any floorplans on this brochure are for illustrative purposes only and are not necessarily to scale.

Offices at: Chorlton, Didsbury, Disley, Hale, Glossop, Macclesfield, Manchester Deansgate, Manchester Whitworth Street, New Mills, Sale, Wilmslow and Withington

14 Market Street, Disley, Cheshire, SK12 2AA

01663 76 78 78

disley@jordanfishwick.co.uk

www.jordanfishwick.co.uk