



jordan fishwick

Lower Lea Disley Stockport



Lower Lea Disley Stockport SK12 2LB

£479,950



The Property

*** NO CHAIN *** Occupying an enviable position in an extremely convenient location in the heart of Disley Village, a truly wonderful detached bungalow. Updated and improved in recent years, this ready to walk into, deceptive home offers spacious, balanced two bedroom plus study accommodation. Situated on a small cul-de-sac of only two other properties and boasting delightful gardens with an office and summerhouse. Re-roofed, pvc double glazing and gas central heating. Comprising: entrance porch, hall, living room, dining room, re-fitted kitchen, utility porch, master bedroom with luxury en-suite, contemporary shower room, bedroom two leading to study/dressing area. Stunning landscaped drystone wall frontage with glass balustrades, off road parking for upto three vehicles and an integral garage/store. Viewing highly recommended




- Popular Location
- Heart of Disley Village
- Detached Bungalow
- Two Double Bedrooms Plus Study
- Amazing Gardens With Views Over Disley
- No Chain
- Driveway and Integral Garage
- Superbly Presented
- Upgraded and Improved In Recent Years

Postcode SK12 2LB

EPC Rating C

Local Authority Cheshire East

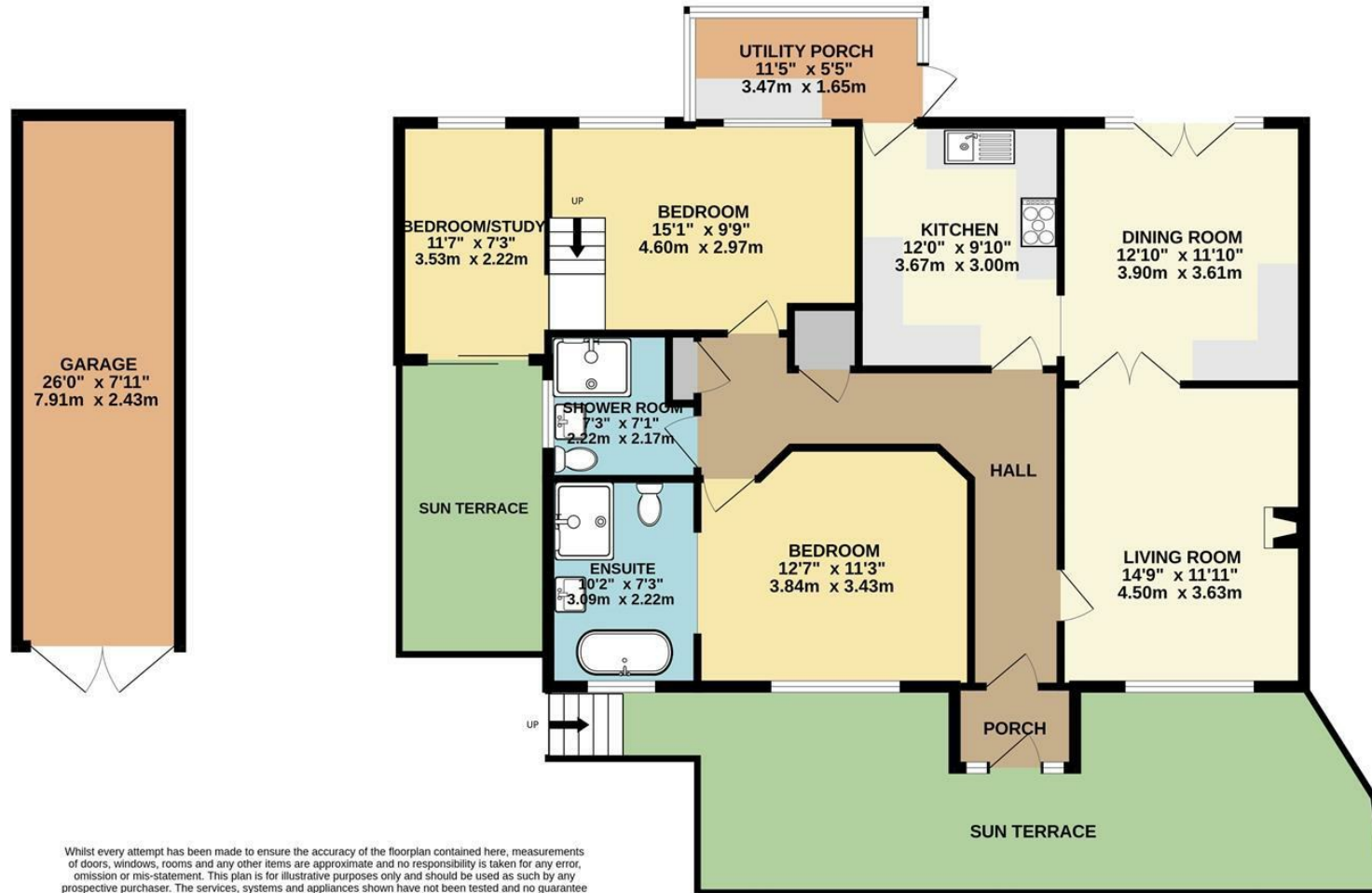
Council Tax E

Energy Efficiency Rating		
	Current	Potential
Very energy efficient - lower running costs		
(92 plus) A		85
(81-91) B		
(69-80) C	70	
(55-68) D		
(39-54) E		
(21-38) F		
(1-20) G		
Not energy efficient - higher running costs		
England & Wales	EU Directive 2002/91/EC 	



BASEMENT

GROUND FLOOR



Whilst every attempt has been made to ensure the accuracy of the floorplan contained here, measurements of doors, windows, rooms and any other items are approximate and no responsibility is taken for any error, omission or mis-statement. This plan is for illustrative purposes only and should be used as such by any prospective purchaser. The services, systems and appliances shown have not been tested and no guarantee as to their operability or efficiency can be given.
 Made with Metropix ©2023



These particulars are believed to be accurate but they are not guaranteed and do not form a contract. Neither Jordan Fishwick nor the vendor or lessor accept any responsibility in respect of these particulars, which are not intended to be statements or representations of fact and any intending purchaser or lessee must satisfy himself by inspection or otherwise as to the correctness of each of the statements contained in these particulars. Any floorplans on this brochure are for illustrative purposes only and are not necessarily to scale.

Offices at: Chorlton, Didsbury, Disley, Hale, Glossop, Macclesfield, Manchester Deansgate, Manchester Whitworth Street, New Mills, Sale, Wilmslow and Withington

14 Market Street, Disley, Cheshire, SK12 2AA

01663 76 78 78

disley@jordanfishwick.co.uk

www.jordanfishwick.co.uk