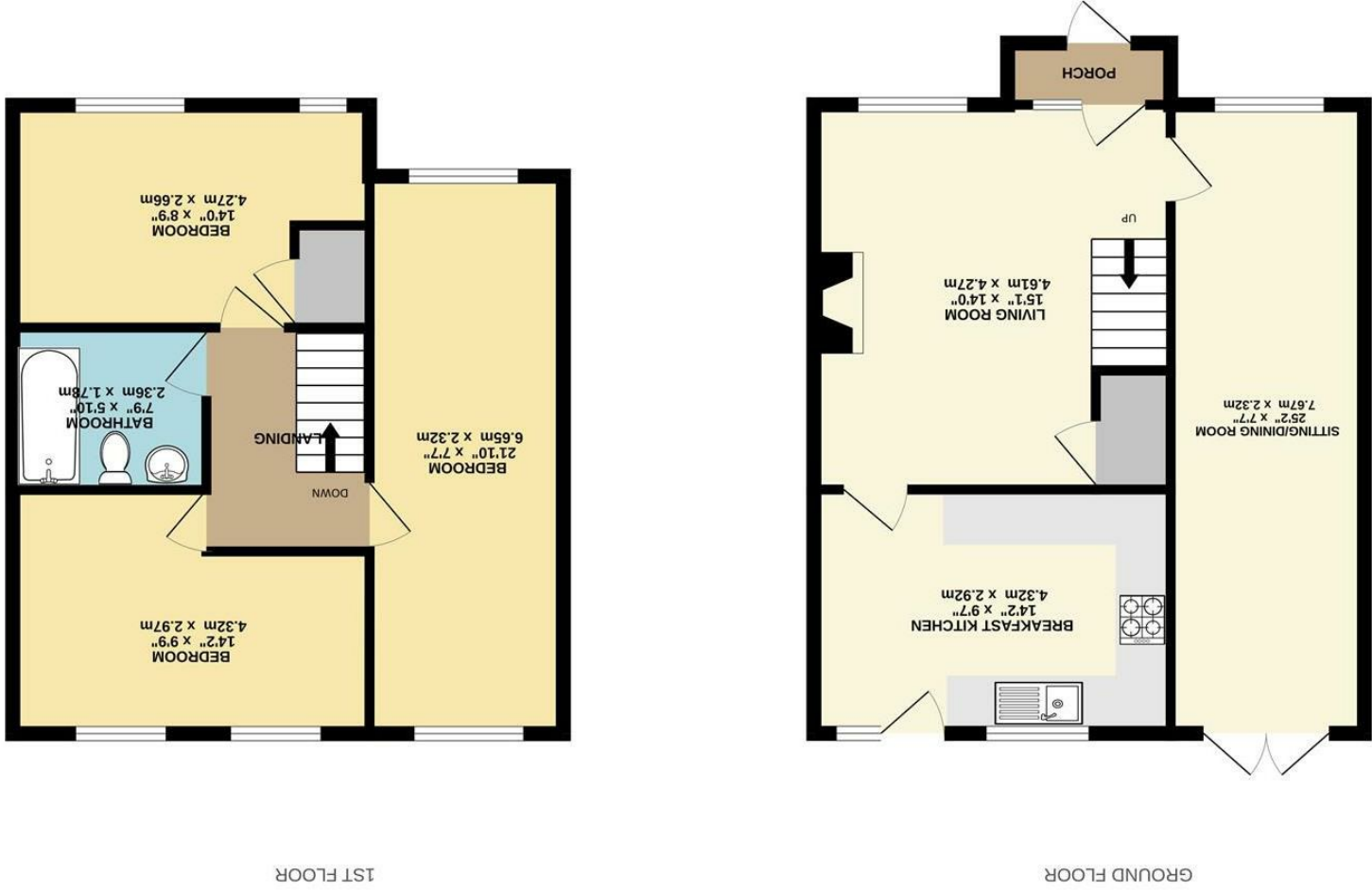


These particulars are believed to be accurate but they are not guaranteed and do not form a contract. Neither Jordan Fishwick nor the vendor or lessor accept any responsibility in respect of these particulars, which are not intended to be statements or representations of fact and any intending purchaser or lessee must satisfy himself by inspection or otherwise as to the correctness of each of the statements contained in these particulars. Any floorplans on this brochure are for illustrative purposes only and are not necessarily to scale.

Whilst every attempt has been made to ensure the accuracy of the floorplan contained here, measurements of doors, windows, rooms and any other items are approximate and no responsibility is taken for any error, omission or mis-statement. This plan is for illustrative purposes only and should be used as such by any prospective purchaser. The services, systems and appliances shown have not been tested and no guarantee as to their operability or efficiency can be given.  
Made with Metropix ©2024





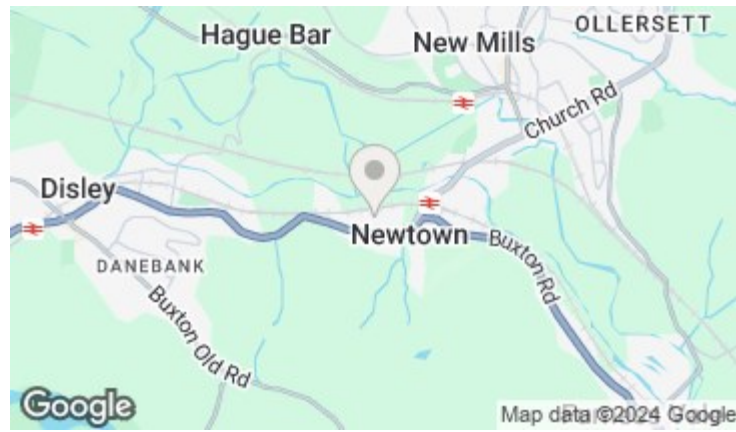
18 Peveril Mews, Newtown, SK12 2RN

£285,000



### The Property

Tucked away at the head of a cul-de-sac, on a small, popular development within easy reach of Newtown Railway Station, a spacious three double bedroom mews home. Beautifully presented throughout and boasting balanced accommodation perfect for most families. Driveway parking and enclosed rear garden coupled with pvc double glazing and gas central heating. Comprising: entrance porch, living room, refitted dining kitchen, 25ft dining/family room, three first floor bedrooms and a bathroom with white suite. Viewing essential.



- Tucked Away Posiiton
- Popular Modern Development
- Three Double Bedrooms
- Immaculate Throughout
- Convenient For Newtown Railway Station
- Driveway and Gardens
- 25FT Dining/Family Room
- Refitted Dining Kitchen

Postcode - SK12 2RN  
EPC Rating - C  
Local Authority - Cheshire East  
Council Tax - D

