



jordan fishwick

Buxton Road Disley Stockport



Buxton Road Disley Stockport SK12 2HA

£260,000



The Property

Arranged over three floors and ideally located for of Disley Village amenities, a spacious and very well presented TWO DOUBLE BEDROOM mid terraced home. Sat behind a walled frontage and boasting a private enclosed garden, this beautiful home has to be viewed. Pvc double glazing, gas central heating and comprising: entrance hall, living room and dining room, lower ground floor re-fitted breakfast kitchen, wc, two generous first floor bedrooms and a bathroom with white suite. Viewing recommended.




- Two Double Bedrooms
- Spacious Accommodation
- Arranged Over Three Floors
- Re-Fitted Breakfast Kitchen
- Living and Dining Room
- Energy Rating: C Council Tax Band: B
- Convenient For Disley Village
- Private Garden
- Ideal First Time Buy
- Pvc Double Glazing and Gas Central Heating

Postcode SK12 2HA

EPC Rating C

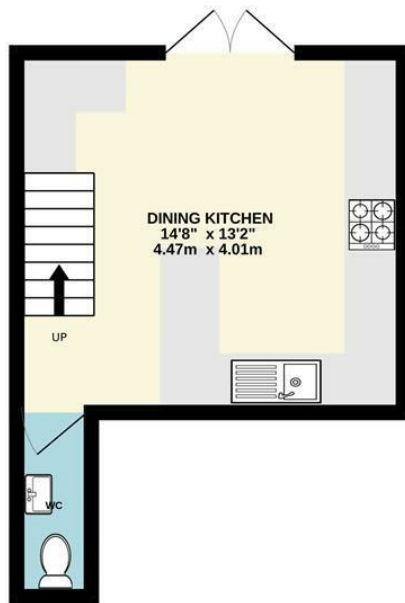
Local Authority Cheshire East

Council Tax B

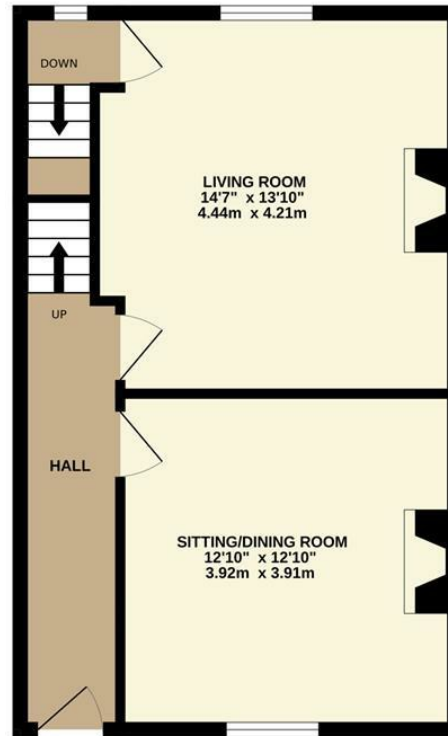
Energy Efficiency Rating		Current	Potential
Very energy efficient - lower running costs			100
(92 plus) A			
(81-91) B			
(69-80) C		73	
(55-68) D			
(39-54) E			
(21-38) F			
(1-20) G			
Not energy efficient - higher running costs			
England & Wales		EU Directive 2002/91/EC 	



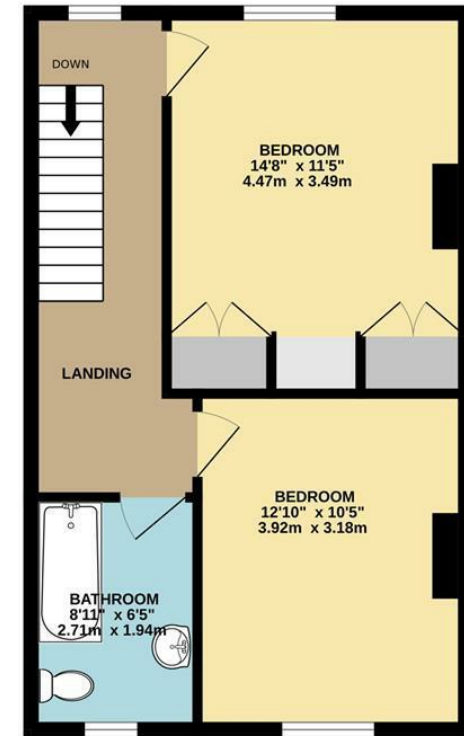
LOWER GROUND FLOOR



GROUND FLOOR



1ST FLOOR



Whilst every attempt has been made to ensure the accuracy of the floorplan contained here, measurements of doors, windows, rooms and any other items are approximate and no responsibility is taken for any error, omission or mis-statement. This plan is for illustrative purposes only and should be used as such by any prospective purchaser. The services, systems and appliances shown have not been tested and no guarantee as to their operability or efficiency can be given.
Made with Metropix ©2024



These particulars are believed to be accurate but they are not guaranteed and do not form a contract. Neither Jordan Fishwick nor the vendor or lessor accept any responsibility in respect of these particulars, which are not intended to be statements or representations of fact and any intending purchaser or lessee must satisfy himself by inspection or otherwise as to the correctness of each of the statements contained in these particulars. Any floorplans on this brochure are for illustrative purposes only and are not necessarily to scale.

Offices at: Chorlton, Didsbury, Disley, Hale, Glossop, Macclesfield, Manchester Deansgate, Manchester Whitworth Street, New Mills, Sale, Wilmslow and Withington

14 Market Street, Disley, Cheshire, SK12 2AA

01663 76 78 78

disley@jordanfishwick.co.uk

www.jordanfishwick.co.uk