



jordan fishwick

Andrew Lane High Lane Stockport



Andrew Lane High Lane Stockport SK6 8HT

£465,000



The Property

** Looking for a fantastic family home? ** Immaculately presented throughout and boasting spacious, versatile extended accommodation with fantastic larger than average gardens! Conveniently located for High Lane amenities and primary school, this delightful 1930's bay fronted semi-detached home has to be viewed. Comprising: entrance porch, hall, dining room, living room, breakfast kitchen, conservatory, utility room wc, four first floor bedrooms, en-suite and family bathroom. Wood burning stove, gas central heating, pvc double glazing, double width driveway, integral garage and stunning private gardens extending to approx 110ft.




- Extended 1930's Semi-Detached
- Fantastic Gardens in Excess of 100ft
- Versatile Four Bedroom Accommodation
- Immaculate Throughout
- Convenient Location
- Conservatory, Utility Room and an En-Suite
- 18ft Living Room With French Doors
- Double Drive and Garage
- Wood Burning Stove

Postcode SK6 8HT

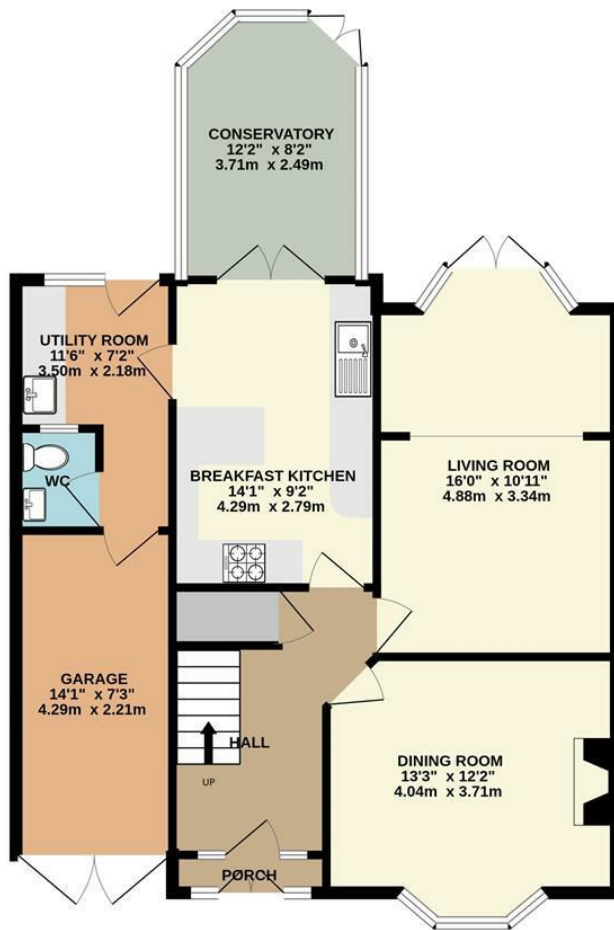
EPC Rating C

Local Authority Stockport

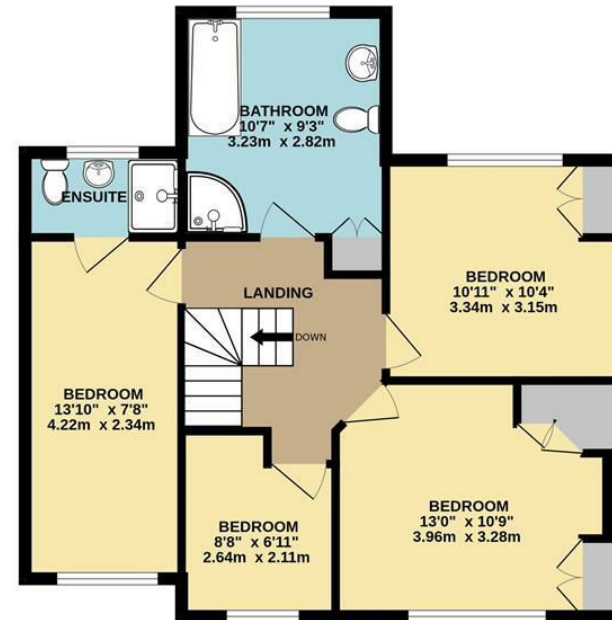
Council Tax C

Energy Efficiency Rating		Current	Potential
Very energy efficient - lower running costs			
(92 plus) A			
(81-91) B			82
(69-80) C		71	
(55-68) D			
(39-54) E			
(21-38) F			
(1-20) G			
Not energy efficient - higher running costs			
England & Wales		EU Directive 2002/91/EC 	





GROUND FLOOR



1ST FLOOR

Whilst every attempt has been made to ensure the accuracy of the floorplan contained here, measurements of doors, windows, rooms and any other items are approximate and no responsibility is taken for any error, omission or mis-statement. This plan is for illustrative purposes only and should be used as such by any prospective purchaser. The services, systems and appliances shown have not been tested and no guarantee as to their operability or efficiency can be given.
Made with Metropix ©2024



These particulars are believed to be accurate but they are not guaranteed and do not form a contract. Neither Jordan Fishwick nor the vendor or lessor accept any responsibility in respect of these particulars, which are not intended to be statements or representations of fact and any intending purchaser or lessee must satisfy himself by inspection or otherwise as to the correctness of each of the statements contained in these particulars. Any floorplans on this brochure are for illustrative purposes only and are not necessarily to scale.

Offices at: Chorlton, Didsbury, Disley, Hale, Glossop, Macclesfield, Manchester Deansgate, Manchester Whitworth Street, New Mills, Sale, Wilmslow and Withington

14 Market Street, Disley, Cheshire, SK12 2AA

01663 76 78 78

disley@jordanfishwick.co.uk

www.jordanfishwick.co.uk