



jordan fishwick

Chantry Road Disley Stockport

Chantry Road Disley Stockport SK12 2BE

£350,000



The Property

****WATCH THE VIDEO TOUR**** Within easy reach of Disley village, railway station and primary school and occupying an enviable position on this popular established residential development is this three bedroom semi-detached property. Set back from the road and offering driveway parking for two cars, an attached garage and large private gardens including a greenhouse and two sheds. With Pvc double glazing and gas central heating, this well presented property comprises: entrance porch, hallway, spacious living room, separate dining area, well appointed fitted kitchen with Siemens integrated appliances, three first floor bedrooms and a good sized bathroom with large separate shower. Viewing highly recommended. Energy rating D



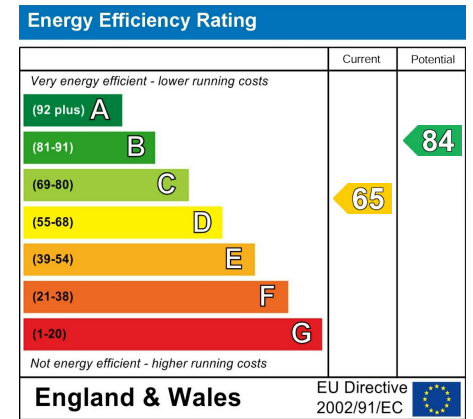
- Popular Position Close to Disley Village, Primary School and Railway Station
- Large Sized Mature Gardens Plus Driveway and Attached Garage
- Fully Fitted Kitchen with Integrated Appliances and Good Storage
- Spacious Bathroom With Quality Suite and Large Shower
- Potential to Extend (Subject to PP)

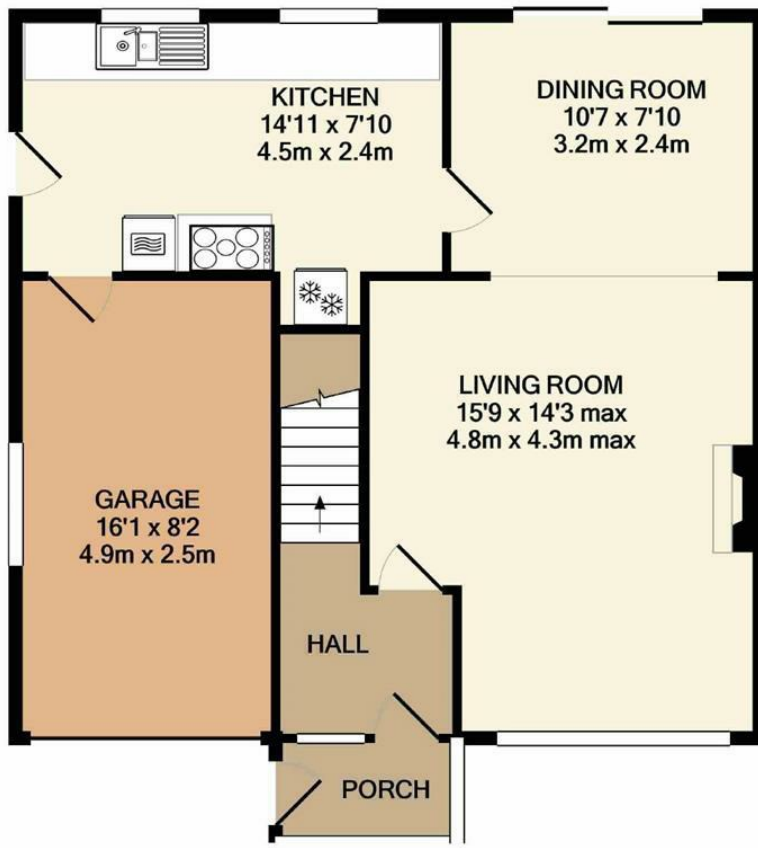
Postcode SK12 2BE

EPC Rating D

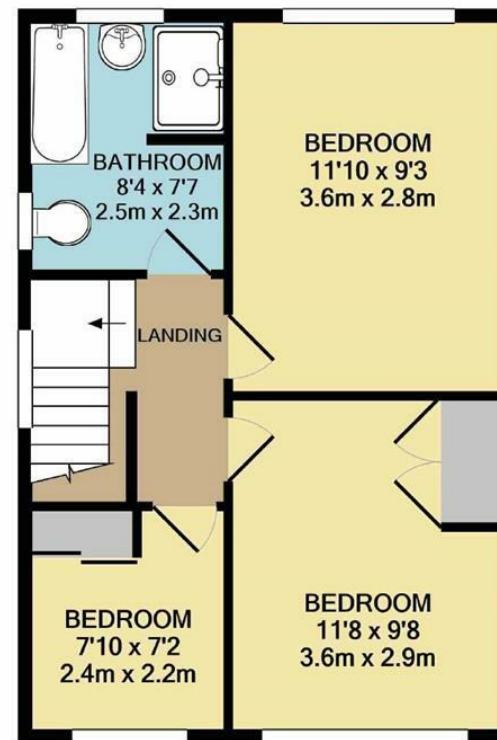
Local Authority Cheshire East

Council Tax C





GROUND FLOOR



1ST FLOOR

Whilst every attempt has been made to ensure the accuracy of the floor plan contained here, measurements of doors, windows, rooms and any other items are approximate and no responsibility is taken for any error, omission, or mis-statement. This plan is for illustrative purposes only and should be used as such by any prospective purchaser. The services, systems and appliances shown have not been tested and no guarantee as to their operability or efficiency can be given
Made with Metropix ©2020



These particulars are believed to be accurate but they are not guaranteed and do not form a contract. Neither Jordan Fishwick nor the vendor or lessor accept any responsibility in respect of these particulars, which are not intended to be statements or representations of fact and any intending purchaser or lessee must satisfy himself by inspection or otherwise as to the correctness of each of the statements contained in these particulars. Any floorplans on this brochure are for illustrative purposes only and are not necessarily to scale.

Offices at: Chorlton, Didsbury, Disley, Hale, Glossop, Macclesfield, Manchester Deansgate, Manchester Whitworth Street, New Mills, Sale, Wilmslow and Withington

14 Market Street, Disley, Cheshire, SK12 2AA

01663 76 78 78

disley@jordanfishwick.co.uk

www.jordanfishwick.co.uk