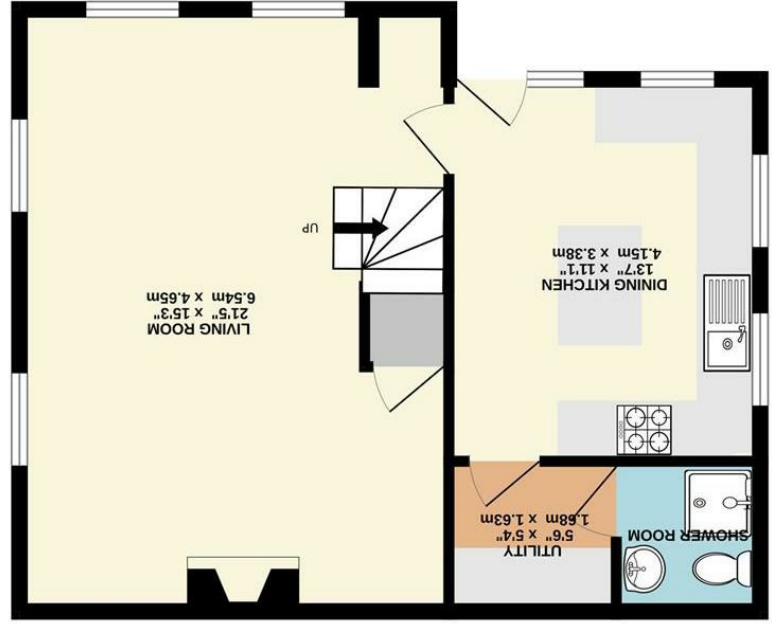
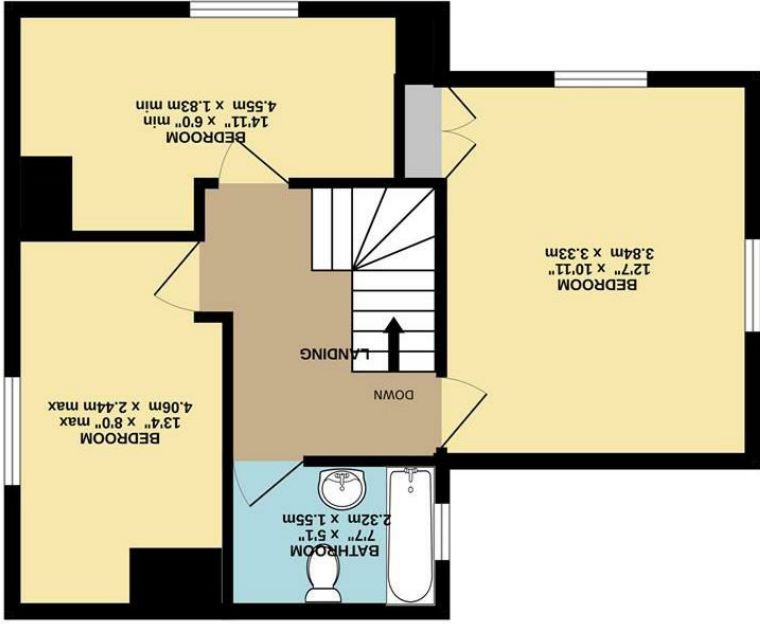


These particulars are believed to be accurate but they are not guaranteed and do not form a contract. Neither Jordan Fishwick nor the vendor or lessor accept any responsibility in respect of these particulars, which are not intended to be statements or representations of fact and any intending purchaser or lessee must satisfy himself by inspection or otherwise as to the correctness of each of the statements contained in these particulars. Any floorplans on this brochure are for illustrative purposes only and are not necessarily to scale.

Whilst every attempt has been made to ensure the accuracy of the floorplan contained here, measurements of doors, windows, rooms and any other items are approximate and no responsibility is taken for any error, omission or mis-statement. This plan is for illustrative purposes only and should be used as such by any prospective purchaser. The services, systems and appliances shown have not been tested and no guarantee as to their operability or efficiency can be given.
Made with Metropix ©2024



GROUND FLOOR



1ST FLOOR



Shaw Stile Cottage Fernilee,
Whaley Bridge, HIGH PEAK,
SK23 7HB
£325,000



The Property

Set in a beautiful tranquil setting and forming part of a small cluster of properties in Fernilee, a delightful three bedroom semi-detached cottage of character. Ideally located in between Whaley Bridge and Buxton with a multitude of walks near the Goyt Valley on the doorstep. Comprising: dining kitchen, utility, shower room, 21ft living room, three first floor bedrooms with views and a bathroom. Paved cottage gardens with off road parking, LPG central heating and double glazing. No Chain and Viewing Highly Recommended.



- Beautiful Position
- Part of a Small Hamlet
- Cottage Garden and Off Road Parking
- Three Bedrooms
- Bathroom and Shower Room
- Ideal For Those Wanting Life In The Countryside
- Double Glazing and Central Heating
- Lovely Views
- No Chain

Postcode - SK23 7HB
EPC Rating - E
Local Authority - HIGH PEAK
Council Tax - C

